



DPU Scoop



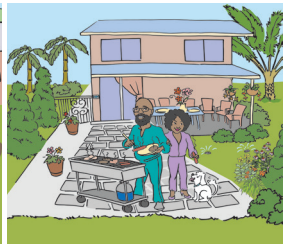
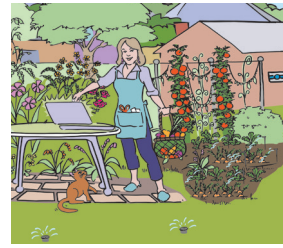
IN THIS EDITION

- Yarden Efficiency Tips
- Rattlesnakes of Los Alamos
- Home Improvements 101
- Seeking Cool Electric Vehicles
- Dear DPU Abbey: Craving Darkness

CONSERVATION

TIPS AND PRACTICES TO IMPROVE THE EFFICIENCY OF YOUR “YARDEN”

- Only plant the landscaping that you are willing to pay to water.
- “The best time to plant a tree was 20 years ago. The second best time is now.” A climate-appropriate tree can provide valuable shade for your home and outdoor spaces.
- Regularly check and maintain your irrigation system/ method for leaks.
- Follow the Water Rule W-8 conservation watering schedule from May 1 – Sept. 30.
- If you are ready for a change, check out our Sustainable Landscape Design series for inspiration at ladpu.com/sustainable-landscaping.
- Install motion sensors or timers on your outdoor lights. Your neighbors and the dark skies will appreciate it.
- Maintain your yard debris for fire protection as needed.



EFFICIENCY SERIES: “YARDEN”



Water Rule W-8: From 5/1 through 9/30, irrigate **before 10 a.m. or after 5 p.m.** on days specified below.

ODD ADDRESSES: Sunday • Wednesday • Friday **EVEN ADDRESSES:** Tuesday • Thursday • Saturday



RATTLESNAKES of Los Alamos...

The two common species of rattlesnakes in Los Alamos are the prairie rattlesnake and the western diamondback. Prairie rattlesnakes can grow up to 5 feet long and western diamondbacks average between 4 and 6 feet in length. These rattlesnakes are thermosensitive, and have a heat-sensitive pit on each side of their head between the nostril and the eye enabling them to detect and accurately strike in the dark.

Most rattlesnakes live in arid habitats and are nocturnal, hiding during the heat of the day in burrows or under rocks, and emerging in the evening or at twilight to hunt for prey, which consists primarily of small mammals, especially rodents. Rattlesnakes use their tails to make a rattling noise. This noise is intended to make predators aware of its presence.

If you encounter a rattlesnake, **follow these TIPS:**

- **Remain calm and do not panic.**
- **Stay at least 5 feet away.**
- **Do not try to kill the snake.** This greatly increases the chance the snake will bite you.
- **Do not throw anything at the snake,** like rocks or sticks. The snake may respond by moving toward you.
- **Alert other people to the snake’s location.** Keep children and pets away from the area.
- **Keep your dog on a leash** when hiking or camping.
- **If you hear a rattle, don’t jump or panic.** Locate where the sound is coming from, so you don’t step closer.
- **If bitten** by a rattlesnake, call 9-1-1 immediately.

To learn more about rattlesnakes and living with other large predators, visit the NM Game & Fish website at www.lacnm.com/NMGF.

Home Improvements 101

If you are going to hire someone to help with home improvements, check their credentials first! Anyone engaged in construction-related contracting in New Mexico must be licensed. This includes general construction work, electrical, mechanical and plumbing, and LP gas.

- [Ask to see their business license.](#)

All contractors doing work in Los Alamos County must have a county business license. This can be obtained through the Los Alamos County Community Development Department (CDD).

- [What are their certifications?](#)

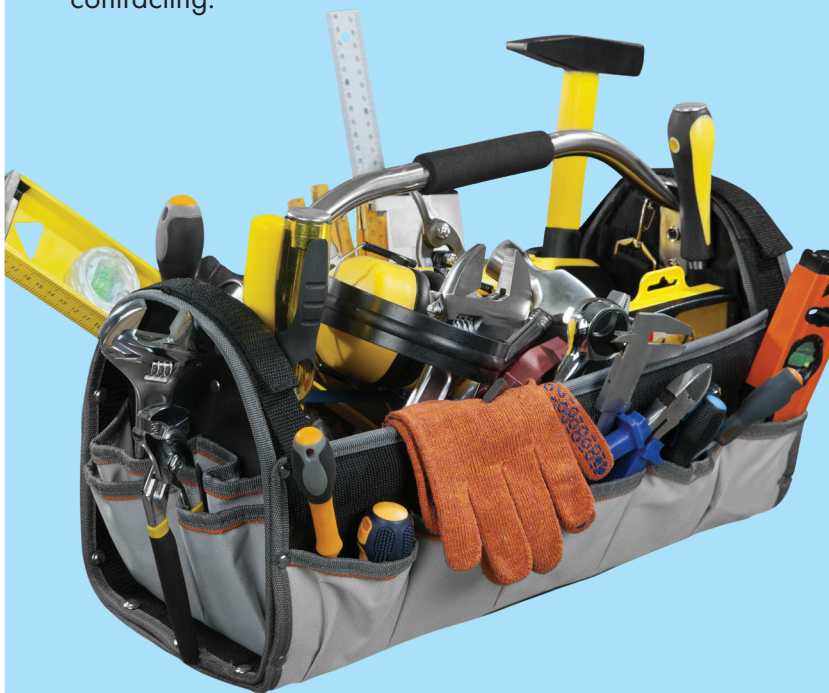
Per the Construction Industries Division (CID) of the State of New Mexico, if someone is going to work on your electric system, they should be a journeyman wireman with an EE-98J certification. This allows them to do work under an EE-98 electrical contractors license. For mechanical and plumbing work, the contractor should hold an MM certification matching the type of work to be done. Contractors for all other improvements should have a GB-2 license for residential work or a GB-98 license for commercial work.

- [Will they be pulling permits for the work?](#)

Most home improvement permits, including for work done by the homeowner rather than a contractor, can be obtained through CDD. Visit lacnm.com/CDD. Unless otherwise exempted, separate electrical, mechanical and plumbing permits may be required from the State of New Mexico's Construction Industries Division (CID).

- [What if work occurs without a required permit?](#)

Don't start construction before obtaining the appropriate permit(s)! The work on your project could be stopped until a permit is obtained, you may incur double fees, and you may have to remove some work for inspection purposes effectively delaying your project. For work that requires CID permits, contractors who fail to obtain these required permits may face criminal charges of unlicensed contracting.



Seeking Cool Electric Vehicles!



www.ladpu.com/EVshow

Want to show off your EV bike, car, or truck?

Join PEEC's Electric Vehicle Show during Discovery Day on July 13.

Dear DPU Abbey: Craving Darkness

Dear DPU Abbey,

My neighbor's patio light shines into my bedroom all night long and it seriously hinders my sleep. I have light-blocking shades but the light still creeps in, not only to my bedroom but to my living room as well. I've asked him to turn the light off at bedtime, but he almost always forgets. How can I convince him to follow through?

-TIRED AND CRANKY HOMEOWNER

Dear Tired,

Sometimes money talks. Have you tried telling him how much the electricity from that one fixture could be costing him? Let's break it down.

\$\$ = watt of bulb/1000 x hours of use x \$0.13*

Common wattage for common bulbs

incandescent = 60 watts

CFL = 13-15 watts

LED = 8-10 watts

halogen = 60 watts

Let's say, for example, that he keeps this one outdoor light on in the backyard 24 hours a day, 365 days a year, and let's assume it has one trusty, old, incandescent bulb.

$$$ = 0.06kW \times 24 \text{ hours} \times \$0.13 \times 365 \text{ days}$

Using the formula above, we can see that this one light is costing him **\$68** a year! That cost grows with each additional bulb.

Does he know how often his patio light is keeping you awake at night? If the financial savings argument doesn't help him remember to flip the light switch off, maybe a middle-of-the-night reminder phone call will.

* residential electricity rate

FOLLOW US!

Stay in the know on all things DPU by following us on social media



LOS ALAMOS
Department of Public Utilities

ladpu.com/DPU