



# DPU Scoop



## IN THIS EDITION

- Summer of Sewer
- Prevent Wildlife Conflicts
- How Power Shutoffs for Safety Impact Us
- Home Improvements 101

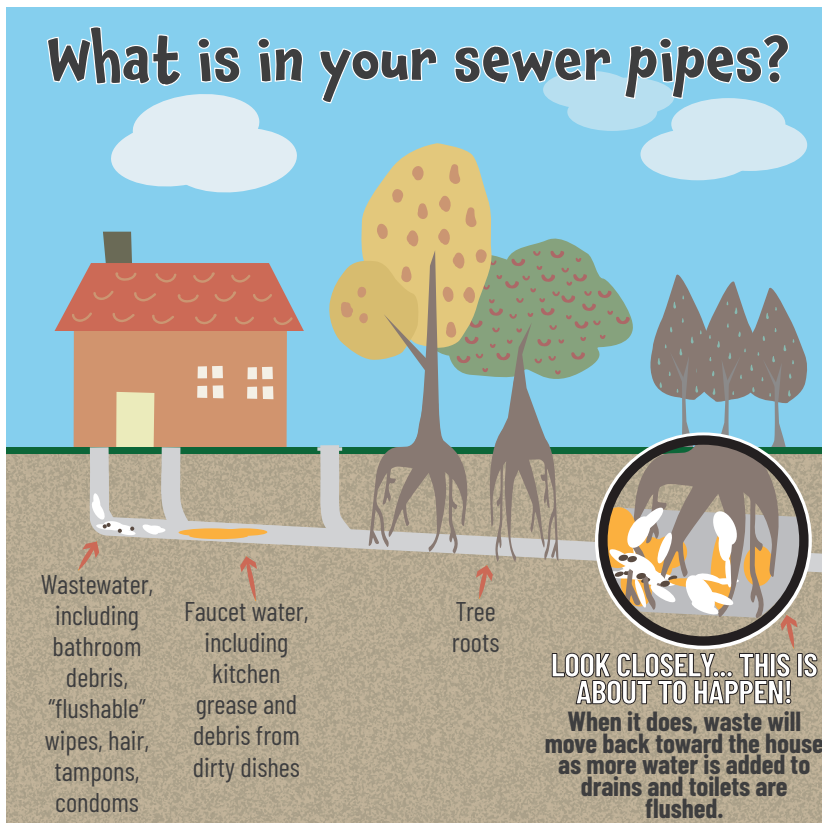
# SUMMER SEWER

Don't let your bad habits ruin someone else's good time! Let's spread the love, man, not the sewage.

- If it's not toilet paper or didn't come from a bodily function, DO NOT flush it down the toilet.
- There's nothing flushable about "flushable" wipes. They are root grabbers!
- Scrape or wipe off excess oil, grease, fats, gooey cheeses and thick creams from your dishes into the trash and NOT down the sink.
- Just because your sink's garbage disposal made waste "disappear," that doesn't mean it made it to the wastewater treatment plant. We hope you'll trust us on this one because ignorance isn't always bliss.

Find DPU at ChamberFest, ScienceFest's Discovery Day, and several Farmer's Markets over the summer for hands-on, interactive games and demonstrations. Sharpen your knowledge of flushables and help keep our sewers flowing smoothly!

## What is in your sewer pipes?



## Prevent wildlife conflicts...

Warmer weather is here, and the local wildlife is actively seeking food and water sources, leading to an increase in human encounters. Take proactive and preventive measures around the home and garden to help prevent conflicts.

### Manage your trash:

Garbage "raiding" is the leading attraction for wildlife large and small. Store trash in secure containers or bear carts.

### Don't leave pet food outdoors:

Pet food left outdoors can become a source of food for wild animals and increase the risk of an unwanted encounter.

### Remove other food sources:

Make your yard unattractive to raccoons, coyotes, bears and others by keeping barbecue grills clean and pulling bird feeders in at night. Keep non-food products such as candles, sunscreen and insect repellent indoors when not in use.



### Remove potential hiding places:

Remove or close off access to areas under decks and storage sheds, as well as rock and wood piles.

### Safely scare wildlife away:

Devices that move, make noise or spray water can safely deter wildlife from unwanted areas.

### Clear the roof:

Trim branches away from your house to limit access for climbing wildlife and keep your foundation clear of debris.

### Install an appropriate chimney cap:

Prevent wildlife from looking in your chimney for a snug place for their den.

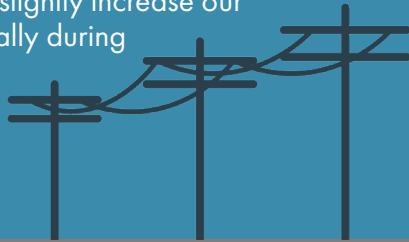
To learn more about living with wildlife on the Pajarito Plateau, visit the County website at [www.lacnm.com/wildlife](http://www.lacnm.com/wildlife).

# How Power Shutoffs for Safety Impact Us

*This spring and summer, you may see news or social media posts about Public Safety Power Shutoffs—or PSPS—a new program launched by PNM. While electric customers in Los Alamos County get their electricity from DPU instead, it's important to know if and how PNM's program may impact you.*

## What you should know

- DPU is the local public power provider in Los Alamos County. The electricity that we deliver to our customers enters our local system through PNM's electric transmission lines.
- PNM's program was launched this year to address the risk of wildfires caused by powerlines. PSPS actions are a last resort and only implemented when extreme weather like strong winds and dry conditions increase wildfire risk.
- Here in Los Alamos County, PNM's shutoffs don't necessarily mean shutoffs for us. Our electric system includes redundant feeds that enable us to cover the loss of power from alternate transmission lines. With the advance notice that PNM provides for its PSPS actions, we should have time to reconfigure our system to avoid disruption. Though this situation may slightly increase our risk of power loss, especially during extreme weather events, we are confident in our redundancies and don't expect that to happen.



## What you can do

- Get your information about local PSPS actions from DPU. When we may be impacted within Los Alamos County, DPU will notify customers through news releases and social media. Keep in mind that you may encounter messaging about a PSPS that impacts our neighboring communities but not Los Alamos County. If you are unsure if a PSPS affects us here, call (505) 662-8333 or email [CustomerCare@lacnm.us](mailto:CustomerCare@lacnm.us).
- Regardless of PNM's actions, warm weather often brings high winds, dry conditions and increased fire risk, all of which drive up the chance of unexpected power disruptions. We encourage county residents who rely on electrically powered medical devices to review their backup plans and make sure device batteries are fully charged. DPU maintains a voluntary list of customers who rely on medical devices and who would appreciate advance notice of planned outages. To add yourself or a family member to that list, visit [ladpu.com/links](https://ladpu.com/links) and scroll to the Customer Resources section.
- Follow DPU on social media. Visit [ladpu.com/links](https://ladpu.com/links) for a list of channels.

## Home Improvements 101

**If you are going to hire someone to help with home improvements, check their credentials first!**

**Anyone engaged in construction-related contracting in New Mexico must be licensed.**

**This includes general construction work, electrical, mechanical and plumbing, and LP gas.**

### • [Ask to see their business license.](#)

All contractors doing work in Los Alamos County must have a county business license. This can be obtained through the Los Alamos County Community Development Department (CDD).

### • [What are their certifications?](#)

Per the Construction Industries Division (CID) of the State of New Mexico, if someone is going to work on your electric system, they should be a journeyman wireman with an EE-98J certification. This allows them to do work under an EE-98 electrical contractors license. For mechanical and plumbing work, the contractor should hold an MM certification matching the type of work to be done. Contractors for all other improvements should have a GB-2 license for residential work or a GB-98 license for commercial work.

### • [Will they be pulling permits for the work?](#)

Most home improvement permits, including for work done by the homeowner rather than a contractor, can be obtained through CDD. Visit [lacnm.com/CDD](https://lacnm.com/CDD).

Unless otherwise exempted, separate electrical, mechanical and plumbing permits may be required from the State of New Mexico's Construction Industries Division (CID).

### • [What if work occurs without a required permit?](#)

Don't start construction before obtaining the appropriate permit(s)! The work on your project could be stopped until a permit is obtained, you may incur double fees, and you may have to remove some work for inspection purposes effectively delaying your project. For work that requires CID permits, contractors who fail to obtain these required permits may face criminal charges of unlicensed contracting.



## FIND DPU ONLINE!

Connect through our Linktree at <https://ladpu.com/Links>



YouTube