



505.662.8333



CustomerCare@lacnm.us



1000 Central Ave., Suite 130
Los Alamos, NM 87544

DPU Scoop



IN THIS EDITION

- I Spy With the Thermal Eye...
- Use AMI Portal to Manage Bills
- Utilice el Portal AMI para Manejar Sus Facturas
- Electric Rates Changed October 1
- Is Your Kitchen Vent Doing Anything?

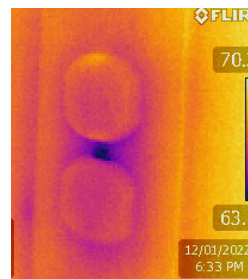
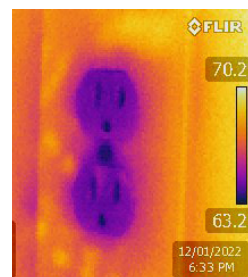
I SPY WITH THE THERMAL EYE...

Your home has a cold spot in the kitchen and a mysterious draft sweeping through the bedroom. What is happening? Now you can check out a tool from the public libraries to see behind the walls of your home. Introducing the newest instrument available in the Library of Things...the thermal camera.

Thermal images are worth a thousand words. This little device connects directly to the charging port of your smartphone (both Android and iPhone). Using the FLIR One App, explore your living spaces in a world of infrared color. You can pinpoint air leaks, areas of lacking insulation, and electronics that are pulling power even when "off."



Any Los Alamos County library card holder can check out the thermal camera from either the Mesa Public Library or the White Rock Branch Library now! This tool can be used by homeowners, renters and business owners. Let's make your home (or work space) a little more energy efficient!



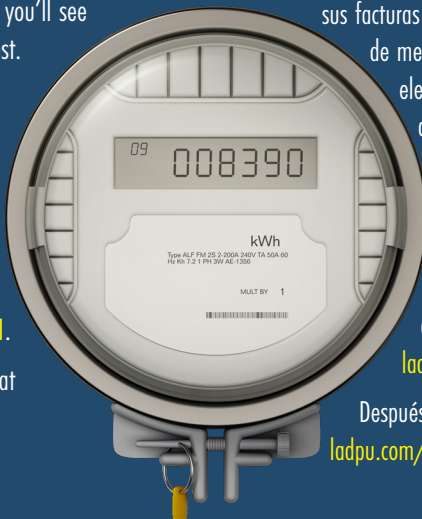
USE AMI PORTAL TO MANAGE BILLS

With Automated Metering Self Service, you can make informed decisions about how to optimize your utility use, conserve more effectively and reduce your utility bills.

When you log into the Automated Metering portal regularly, you'll see when your electric, gas and water consumption is the greatest. Having a quick view of your peak usage times helps you determine what activities might be affecting your usage the most. You can see usage at regular intervals, from hourly to monthly, and you can make smart decisions that will benefit both your wallet and the environment.

For instructions to set up an Automated Metering Self Service login for your utility account, go to ladpu.com/Step1.

Once your login is set up, you can go straight to the portal at ladpu.com/MyMeters.



UTILICE EL PORTAL AMI PARA MANEJAR SUS FACTURAS

Con el autoservicio medido automatizado, puede tomar decisiones informadas sobre cómo optimizar su consumo de servicios, conservar de manera más eficiente y reducir sus facturas de servicios. Cuando inicie su sesión con regularidad en el portal de medición automatizada, podrá ver cuándo es el mayor uso de electricidad, gas y agua. Un rápido vistazo a sus horas de consumo alto le ayudará a determinar qué actividades podrían afectar más su consumo. Puede ver el consumo en intervalos regulares desde horas hasta por meses, y puede tomar decisiones inteligentes que beneficiarán a su cartera y al medio ambiente.

Para ver las instrucciones para configurar una cuenta de autoservicio medido automatizado para sus servicios, visite ladpu.com/Step1.

Después de configurar su cuenta, puede ir directamente al portal en ladpu.com/MyMeters.

Electric rates changed October 1

Charge Type	Thru 9/30	Starting 10/1	Frequency
RESIDENTIAL			
Service Charge	12.00	12.00	per month
Commodity Rate	0.1152	0.1282	per kwh
COMMERCIAL			
Service Charge	22.00	22.00	per month
Small Meter	0.1111	0.1229	per kwh
Large Meter	0.0821	0.0899	per kwh
Demand	10.50	11.51	per KW of peak demand
COUNTY			
Service Charge	22.00	22.00	per month
Small Meter	0.1142	0.1263	per kwh
Large Meter	0.0834	0.0914	per kwh
Demand	10.50	11.50	per KW of peak demand
SCHOOLS			
Service Charge	22.00	22.00	per month
Small Meter	0.1089	0.1205	per kwh
Large Meter	0.0763	0.0836	per kwh
Demand	10.50	11.51	per KW of peak demand
WINTER REC FAC			
Service Charge	65.00	65.00	per month
Large Meter	0.0821	0.0908	per kwh
Demand	11.00	12.17	per KW of peak demand
AREA LIGHTING (METERED)			
Service Charge	1.20	1.31	per light
Metered Rate	0.1280	0.1400	per kwh
AREA LIGHTING (PRIVATE/UNMETERED)			
70-Watt Monthly	3.44	3.77	per bulb
100-Watt Monthly	4.84	5.30	per bulb
175-Watt Monthly	8.10	8.87	per bulb
400-Watt Monthly	17.14	18.77	per bulb
AREA LIGHTING (COUNTY & SCHOOLS/UNMETERED)			
70-Watt Monthly	4.46	4.88	per bulb
100-Watt Monthly	5.80	6.35	per bulb
175-Watt Monthly	8.86	9.70	per bulb
400-Watt Monthly	17.45	19.11	per bulb
AREA LIGHTING (RES'L & COMM'L/UNMETERED)			
70-Watt Monthly	4.50	4.93	per bulb
100-Watt Monthly	6.06	6.64	per bulb
175-Watt Monthly	9.30	10.18	per bulb
400-Watt Monthly	18.34	20.08	per bulb

All above rate changes were adopted by County Council on 9/26/2023.

Is Your Kitchen Vent Doing Anything?

Are you even using that noisy thing above your cooking surface?

Hood vents do more than simply move grease, smoke, and odors from your kitchen. They are vital for improving indoor air quality by sucking away fumes created by cooking fuels and the potentially harmful bi-products as food goes through the chemical transformation of cooking. Vents are not just for stovetop cooking. They should also be used when you are cooking in the oven—especially a gas oven—in case something burns or to remove gas fumes. Another added benefit is that they remove heat from the area once cooking is complete.

That being said, it's all for naught if your hood vent isn't sized correctly or actually venting anything. A hood vent should be the same width as your cooktop and deep enough to sufficiently cover all of the burners.

Make sure you clean the filter regularly to keep your home healthy and the vent operating efficiently. Typically, a proper hood vent needs an outlet to the outdoors, but if you have a recirculating hood, cleaning the filter is even more important!

Researchers at Lawrence Berkeley National Laboratory published an interesting study: "Effective Kitchen Ventilation for Healthy Zero Net Energy Homes with Natural Gas." Read more about their findings at ladpu.com/hoodvent.



LOS ALAMOS
Department of Public Utilities

ladpu.com/DPU