

## DISTRIBUTION

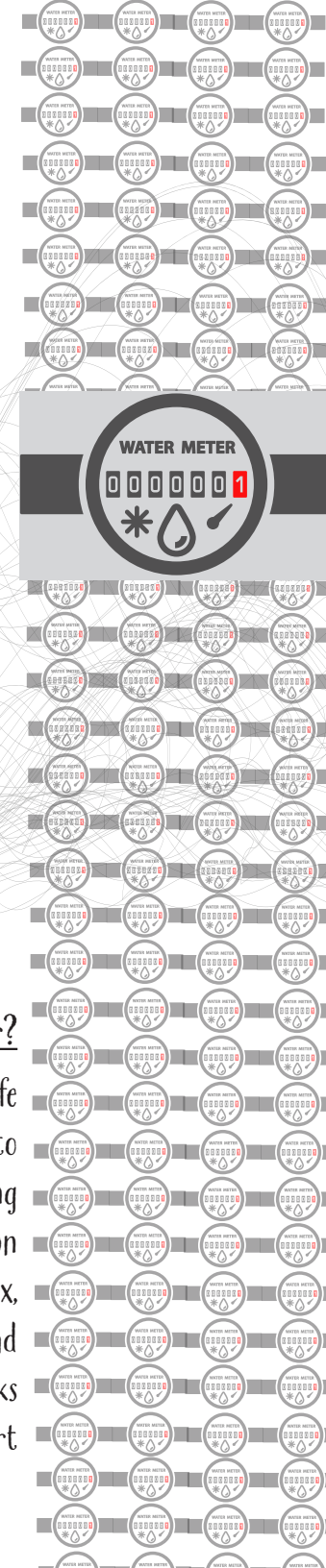
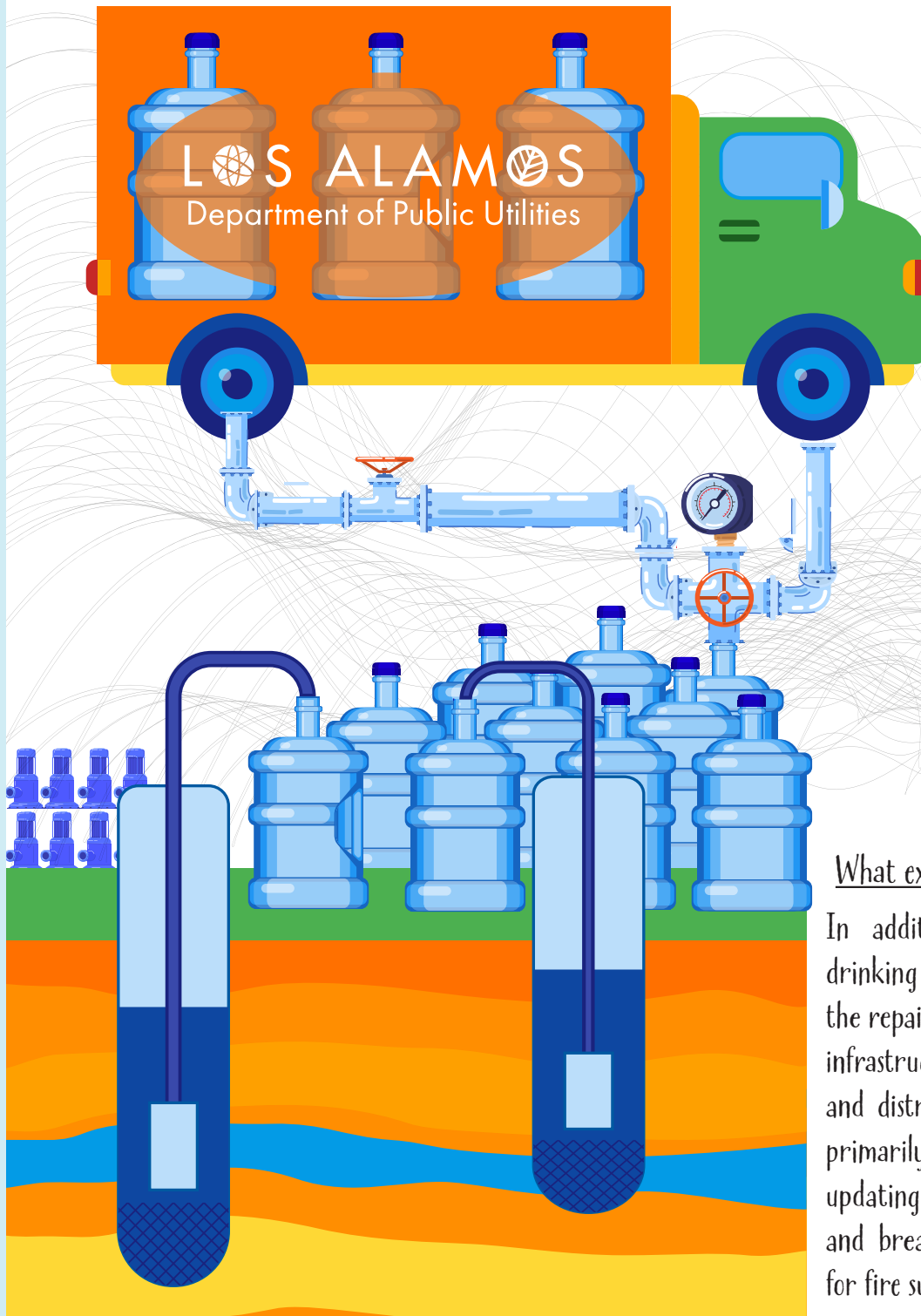
122 miles of distribution lines  
64 pressure regulating valves  
serving 7000+ meters

## PRODUCTION

25 tanks  
30 million gallons of storage  
45 miles of transmission lines  
4 disinfection facilities  
5 pressure regulating station  
17 pumping stations  
13 production wells ranging  
in depth from 1,519 feet  
to 3,092 feet.

## SOURCE

Groundwater basin is the Rio Grande Basin, declared in 1956. We pull water from the western side of the Española sub-basin, which are mostly unconfined sediment aquifers.



### What exactly are you paying for?

In addition to maintaining safe drinking water, rates contribute to the repair and replacement of aging infrastructure. Our water production and distribution system is complex, primarily thanks to topography, and updating the system reduces leaks and breaks while ensuring support for fire suppression.