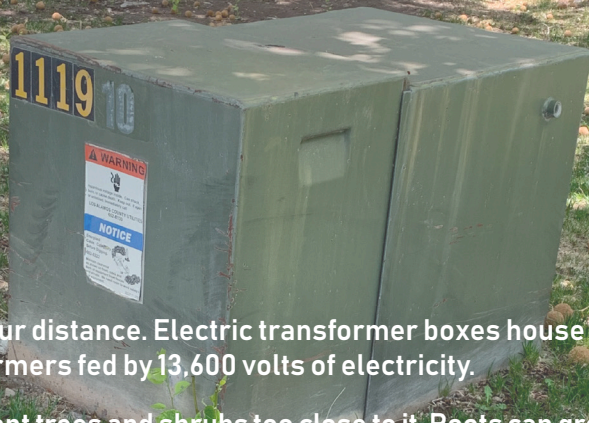


Do you have an electric transformer box in your yard?



- Keep your distance. Electric transformer boxes house transformers fed by 13,600 volts of electricity.
- Don't plant trees and shrubs too close to it. Roots can grow around underground power lines presenting a potential hazard for anyone that tries to remove that plant.
- To work on the transformers safely, electric linemen need at least 8 feet of clearance in front and 3 feet on the other three sides
- DPU will be assessing these boxes all over Los Alamos and White Rock. They will leave door hangers where vegetation is impeding access to the a transformer box. Do not try to remove these trees and shrubs yourself!

- Even when situated on private property, all transformer boxes are on county electric easements.
- When planting vegetation, call for locates by dialing 811 first even if a transformer is not in the area. Contact NM811 at least two days before digging. You can also submit a locate request online at www.NM811.org. Click on "I'm About to Dig."
- Contact DPU if you have questions: 505.662.8333, customer@lacnm.us