

# ADDENDUM



Incorporated County of Los Alamos  
Procurement Division  
101 Camino Entrada, Building 3  
Los Alamos, NM 87544

This Addendum forms a part of the Solicitation documents and modifies the original Solicitation documents, as stated herein. All other provisions of the Solicitation documents remain unchanged. This Addendum is hereby made a part of the Solicitation documents to the same extent as those provisions contained in the original documents and all itemized listings thereof.

## **GENERAL INFORMATION**

<b>To:</b>	All holders of Solicitation documents for the below-referenced Solicitation.
<b>Date:</b>	May 20, 2025
<b>Addendum No.:</b>	No. 1
<b>Solicitation No.:</b>	IFB25-55
<b>Solicitation Title:</b>	37 <sup>th</sup> Street and Piñon Park Play Lot Renovation
<b>Contact Name:</b>	Kat Brophy
<b>Contact Title:</b>	Management Analyst
<b>Contact Phone No.:</b>	505-662-8127
<b>Contact E-Mail:</b>	Kat.brophy@lacnm.us

## **ACKNOWLEDGEMENT**

Respondents are requested to acknowledge receipt of this Addendum by submitting a signed copy of page one (1) of this Addendum with Respondent's Bid or Proposal. Pursuant to NMSA 1978 §14-16-7, this acknowledgement may be signed by electronic signature.

**I hereby acknowledge receipt of this Addendum.**

<b>Name:</b>		<b>Date:</b>	
<b>Title:</b>		<b>Signature:</b>	
<b>Company:</b>			

(This space intentionally left blank)

## MODIFICATIONS TO THE SOLICITATION AND/OR Q&A

Please note the modifications to the Solicitation and/or questions received and County's answers.

- Attendance Sheet for the Non-Mandatory Pre-Bid Conference held on Monday, May 19<sup>th</sup> is as follows:



### **IFB25-55 37<sup>th</sup> Street and Piñon Park Play Lot Renovations**

**Non-Mandatory Virtual Pre-Bid Conference: May 19, 2025, 2:00 p.m.**  
**ATTENDANCE SHEET**

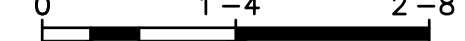
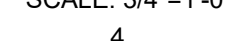
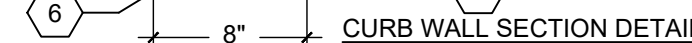
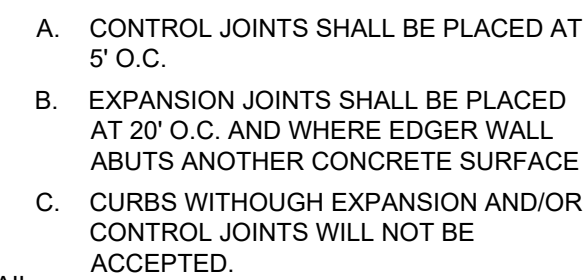
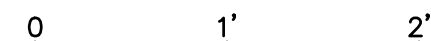
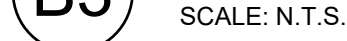
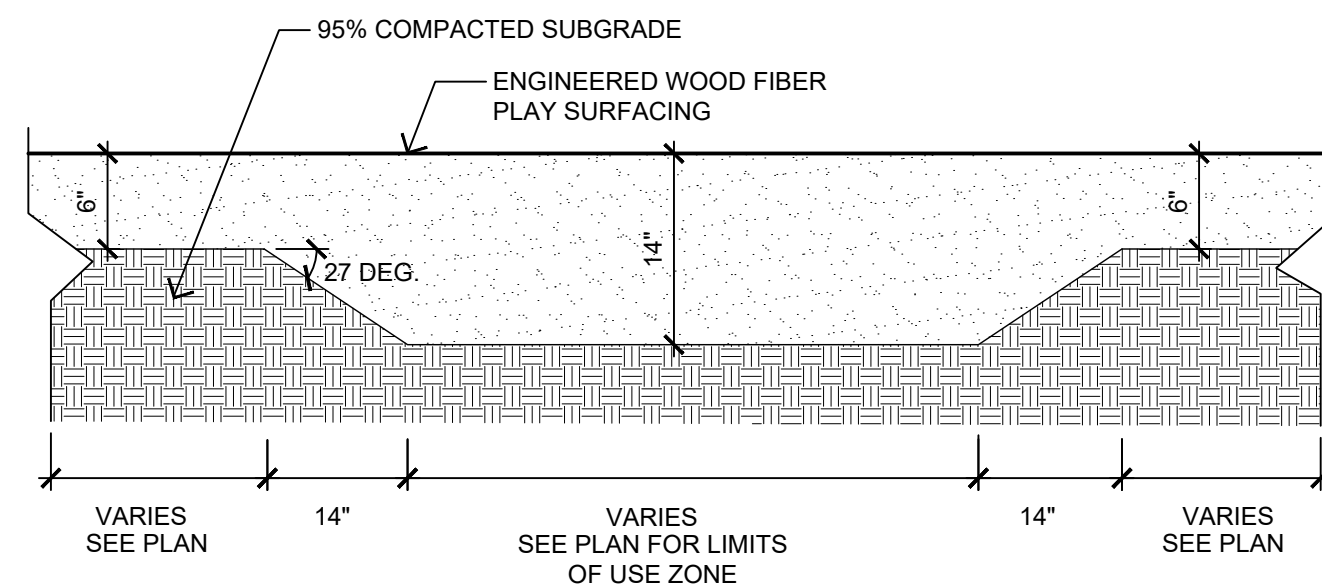
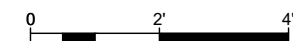
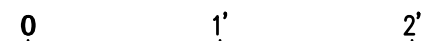
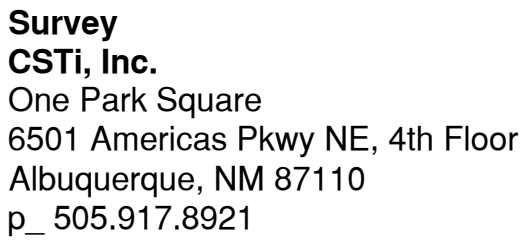
Name	Company	Phone	E-Mail
KAT BIOPHY	LA COUNTY	505-662-8127	KAT.BIOPHY@LACNM.US
JEFF ENGELHARDT	LA COUNTY	505-662-8056	JEFF.ENGELHARDT@LACNM.US
ANDREA NEAL	EXERPLAY	505-999-8031	andrea@exerplay.com
Wendy Parker	LAC	355-063-1771	Wendy.Parker@lacnm.us
EMILY ROGERS	Anthropopus	512-940-8298	emily@anthropop.com
Cory Styron	LAC	66662	Cory.Styron@lacnm.us
Chelsey A.	LAC		Chelsey.ashcraft@lacnm.us
Megan T	LA Land	5056626234	contact@losalamoslandscaping.com
Dale Nichols	LA Land	5056626234	Contact@losalamoslandscaping@gmail.com
Craig Walker	LA Land	5054626234	Craig@losalamoslandscaping.com
			8/11/24

Ref. No.	Modification and/or Question	Answers
1.	This Addendum No. 1 provides the aerial view of the 37 <sup>th</sup> Street Play Lot and Staging Area. See attached.	
2.	<b>This Addendum No. 1 extends the closing date of the IFB from June 3, 2025, to June 10, 2025.</b>	
4.	What traffic control will be required for the 37th Street playlot?	This is a residential neighborhood. The Contractor must develop a traffic control plan and submit it to the County Project Manager. The plan will be reviewed by the Project Manager and Public Works staff for approval.
5.	Technical Specifications A - 37 <sup>th</sup> Street Playlot Renovation Drawings, sheets LS101 and LS102 OMIT Keyed Note #9 (Construct 6" Concrete Edger per detail AS/LS501). This item is neither located on the plans nor included on the Bid Form. It is not included in the project.	
6.	Technical Specifications A - 37 <sup>th</sup> Street Playlot Renovation Drawings, sheets LS501 OMIT detail A2 (6" Concrete Edger). This item is neither located on the plans nor included on the bid form, It is not included in the project.	
7.	Technical Specifications B - Piñon Park Renovation Drawings, Sheet LS101, Keyed Note #15, Tabular Boulder Bridge shall be Classic Grey Limestone as available from New Mexico Travertine or approved equal.	
8.	Technical Specifications B - Piñon Park Renovation Drawings, Sheet LS101, Keyed Note #31 is obstructed. It reads, "Play Equipment Use Area."	
9.	This Addendum No. 1 provides Piñon Park drawings sheet LS502. See attached.	

## 37<sup>th</sup> Street Play Lot Aerial View and Staging Area







## PLAY EQUIPMENT

- The quoted price is protected for thirty (30) days if a Complete Order is placed prior to a price change effective date. A product order is a "Complete Order" if entered in the applicable LSI software portal and includes final product, colors, artwork and specifications identified, which is fully ready for LSI manufacturing within normal lead times.
- <sup>2</sup> Any Quote or products that have a total weight above 5,000 lbs shall require a freight quote. Freight tables cannot be used. Custom freight quotes are valid for thirty (30) days and are subject to changes set by the carrier. Unless stated otherwise or in any separate custom freight quote related to this Quote, all prices are FOB Origin (Delano, Minnesota or Dallas, TX).
- [View additional quote terms here.](#)

LS502