



INCORPORATED COUNTY OF LOS ALAMOS

101 Camino Entrada, Building 3
Los Alamos, New Mexico 87544 (505) 663-3507
Procurement Division

November 10, 2023

TO ALL HOLDERS OF SOLICITATION DOCUMENTS FOR:

**Invitation for Bids No. IFB24-22
IFB Name: Airport Fuel Farm Project**

Addendum No. 4

This Addendum No. 4 forms a part of the Solicitation Documents and modifies, as noted below, the original Solicitation Documents identified above.

This Addendum provides questions received and the County's response to all potential Bidders:

1. Define "Substantial Completion". As in concrete is poured, bollards are in, tanks are bolted to the ground, and the electricians are still hooking up to energize, and in the testing phase? Would that scenario be accurate to be at the "Substantial Completion deadline of Sept 1st?

Response: Definitions for Completion are provided in Section 3.2.1, L. Substantial completion is stated as: "The date when the Contractor and County consider the entire Work ready for its intended use as evidenced by the Certificate of Substantial Completion."

Please Note, pursuant to Addendum No. 1, the Substantial Completion Date and Final Completion Date established for the project are September 1, 2024 and September 29, 2024, respectively. Reference to these dates under Section 2.1.6 Contract, Article 2 – Contract Time, Paragraph A are revised as follows:

- A. Construction shall start on or after the date specified on the Notice to Proceed. **The Work shall achieve Substantial Completion by September 1, 2024. The Project shall achieve Final Completion by September 29, 2024.** The calendar day period between the substantial completion and final completion dates is for the sole purpose of completing all punch list items.
2. Will Card Readers on the tanks be required to run fiber optics to hardwire into the existing Wi-Fi system? I believe on the last bid it was decided that the card readers would run off a mobile device so no hookup needed. The card readers are equipped to do both.
Response: The use of wi-fi or mobile connection instead of fiber optic bored under the concrete apron for the Card Reader is included in the specifications for this bid.

3. The Storm Drain Culvert Pipe material type is not stated, please confirm the material type for this application.

Response: When a specific material type is not specified, materials shall meet NMDOT specifications. NMDOT specifications can be found using the following weblink: <https://www.dot.nm.gov/infrastructure/plans-specifications-estimates-pse-bureau/standards/>. It is the responsibility of the Bidding contractor to ensure materials comply with specifications. The contractor is responsible for providing all material information submittals or cut sheets to the County for review and approval by the Engineer. The County reserves the right to obtain additional information from the bidder or other sources regarding technical and performance specifications of suggested materials.

4. Is there a sewer manhole detail or section drawing available, didn't see one in the site plans.

Response: See attached County Department of Public Utilities Construction Standard Drawings 5005 and 5008-A. Standard Drawing 5003, also attached, provides additional related information for sanitary sewer construction. Refer to Plan Sheet C-3, General Note for additional reference information.

5. Is there a sewer manhole build type preferred, i.e., Type-C, Type-E?

Response: See response to number 4 above.

6. Is there a specification for the "penetrating water repellent treatment"? Is it something sprayed over the top or does it get added into the concrete and is it only in the secondary containment area?

Response: The Penetrating Water Repellent Treatment shall comply with NMDOT Standard Specifications Section 532. It is to be applied to all exposed surfaces of the secondary containment area.

All other provisions of the Solicitation Documents shall remain unchanged. This Addendum No. 4 is hereby made a part of the Solicitation Documents to the same extent as those provisions contained in the original documents and all itemized listings thereof.

Each Respondent is requested to acknowledge receipt of this Addendum No. 4 with the Bid Forms.

I hereby acknowledge receipt of this Addendum No. 4.

Signed	Print Name	Date
--------	------------	------

Title	Company
-------	---------

**GRAVITY SEWER MAIN
 TRENCH DETAIL**

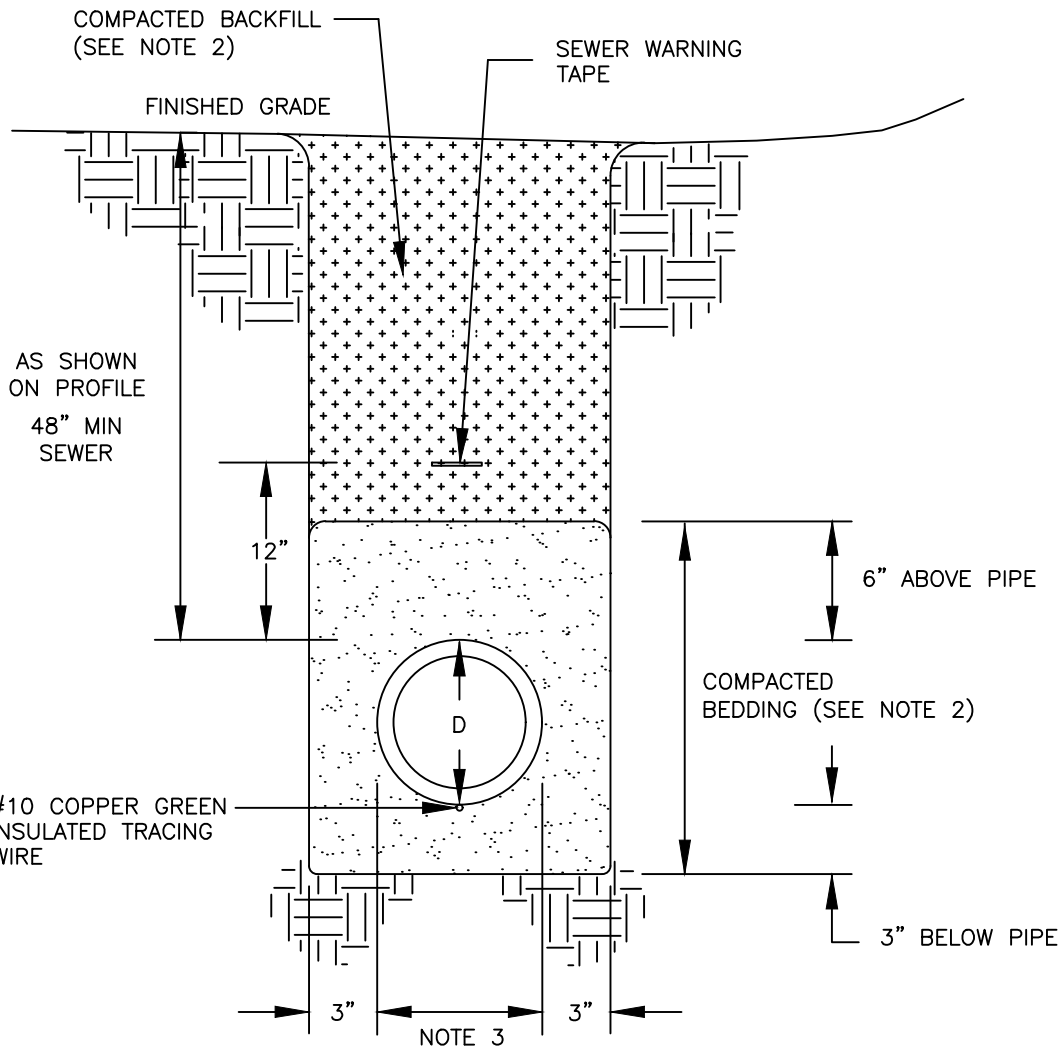
No.

DATE:

REVISION:

APPROVED BY:

DATE: FEBRUARY 2022



NOTES:

- 1.) D IS THE OUTSIDE PIPE DIAMETER IN INCHES.
- 2.) SEE COMPACTION SPECIFICATIONS (SECTION 202) FOR ALL REQUIREMENTS.
- 3.) TRENCH WIDTH SHALL BE DISTANCE FROM OUTSIDE FACE OF OUTER MOST PIPE PLUS 6 INCHES.

PRECAST ECCENTRIC MANHOLE

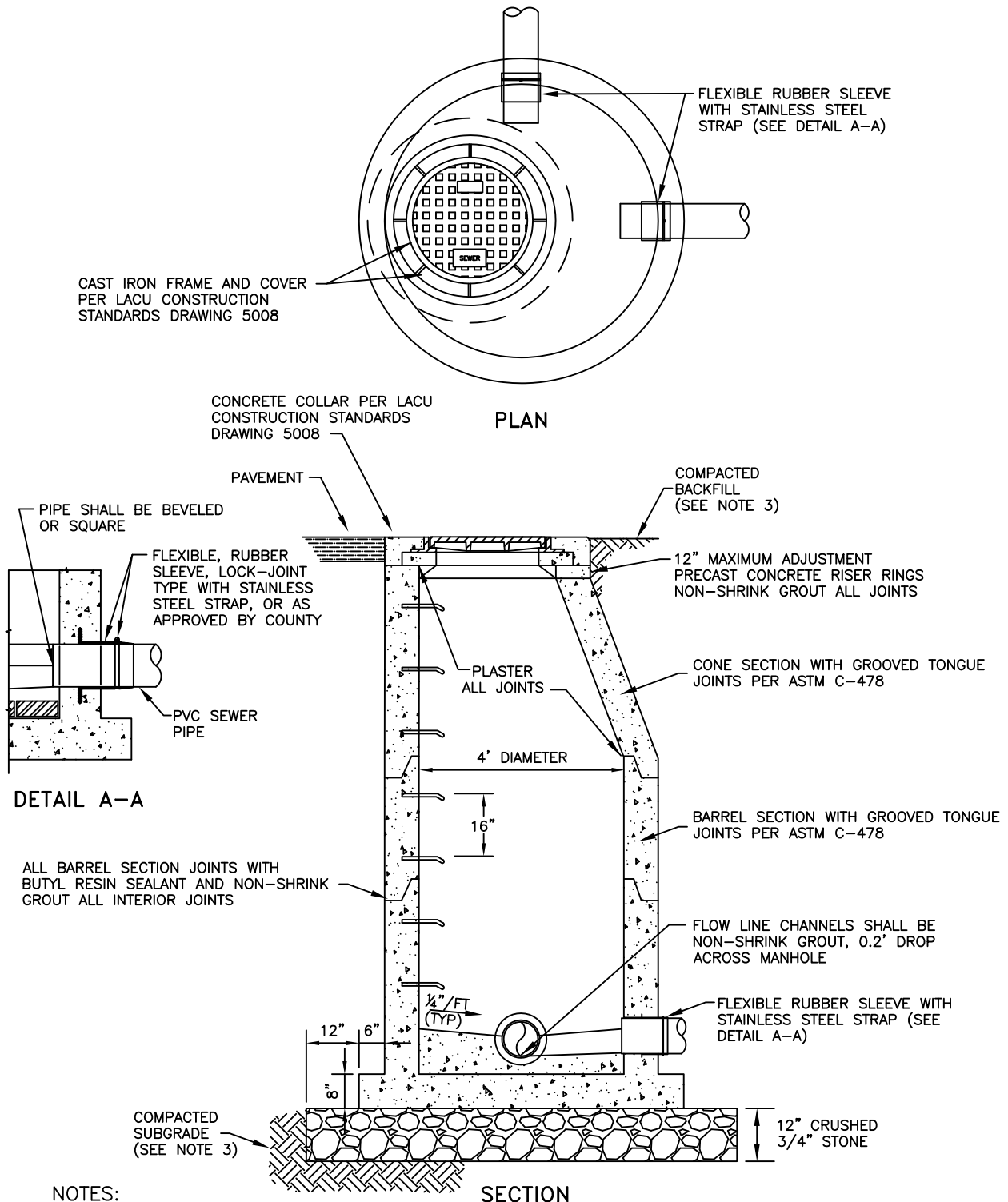
No.

DATE:

REVISION:

APPROVED BY:

DATE: APRIL 2018



DETAIL A-A

SECTION

- NOTES:
- 1.) MANHOLE PER LOS ALAMOS COUNTY UTILITIES CONSTRUCTION STANDARDS SPECIFICATION SECTION 502 SEWER MANHOLES.
 - 2.) NON-SHRINK GROUT PER LOS ALAMOS COUNTY UTILITIES CONSTRUCTION STANDARDS SPECIFICATION SECTION 702 GROUT.
 - 3.) COMPACTION AND BACKFILL PER LOS ALAMOS COUNTY UTILITIES CONSTRUCTION STANDARDS SPECIFICATION SECTION 202, EXCAVATION TRENCHING AND BACKFILL.
 - 4.) MANHOLE STEPS TO BE PLASTIC COATED STEEL STEPS 10"-12" TREAD SPACED 12" PER ASTM D-41 TOP STEP 6" BELOW TOP OF CONE.

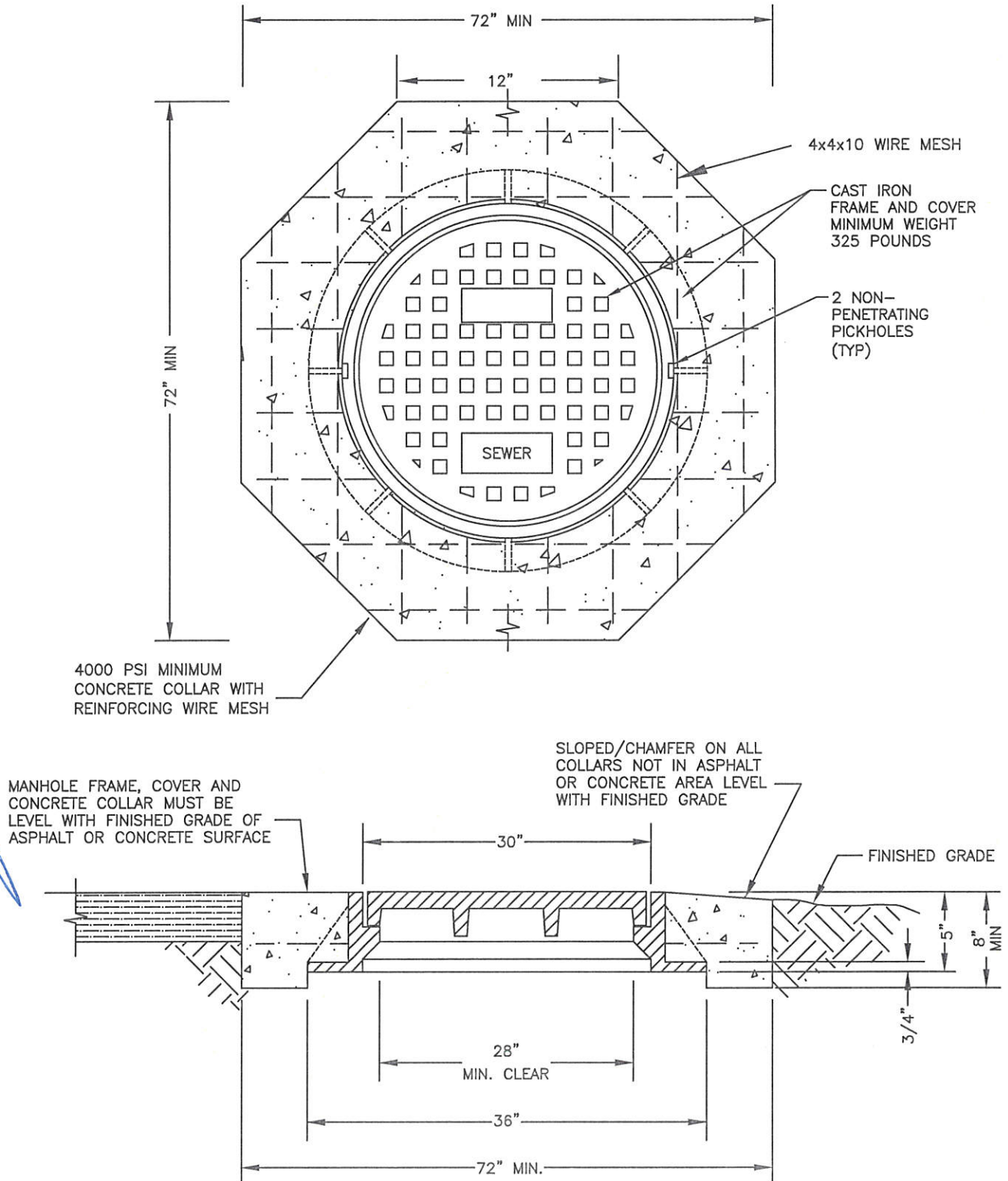
No.

DATE:

REVISION:

APPROVED BY:

DATE: SEPTEMBER 2022



NOTES:

- 1.) RING AND COVER PER LOS ALAMOS COUNTY UTILITIES CONSTRUCTION STANDARDS SPECIFICATION SECTION 502 STRUCTURE.
- 2.) CONCRETE COLLAR PER LOS ALAMOS COUNTY UTILITIES CONSTRUCTION STANDARDS SPECIFICATION SECTION 701 CAST-IN-PLACE CONCRETE.