

# Wildland Fire Preparedness

Local Emergency Planning Committee

March 2025

# Agenda

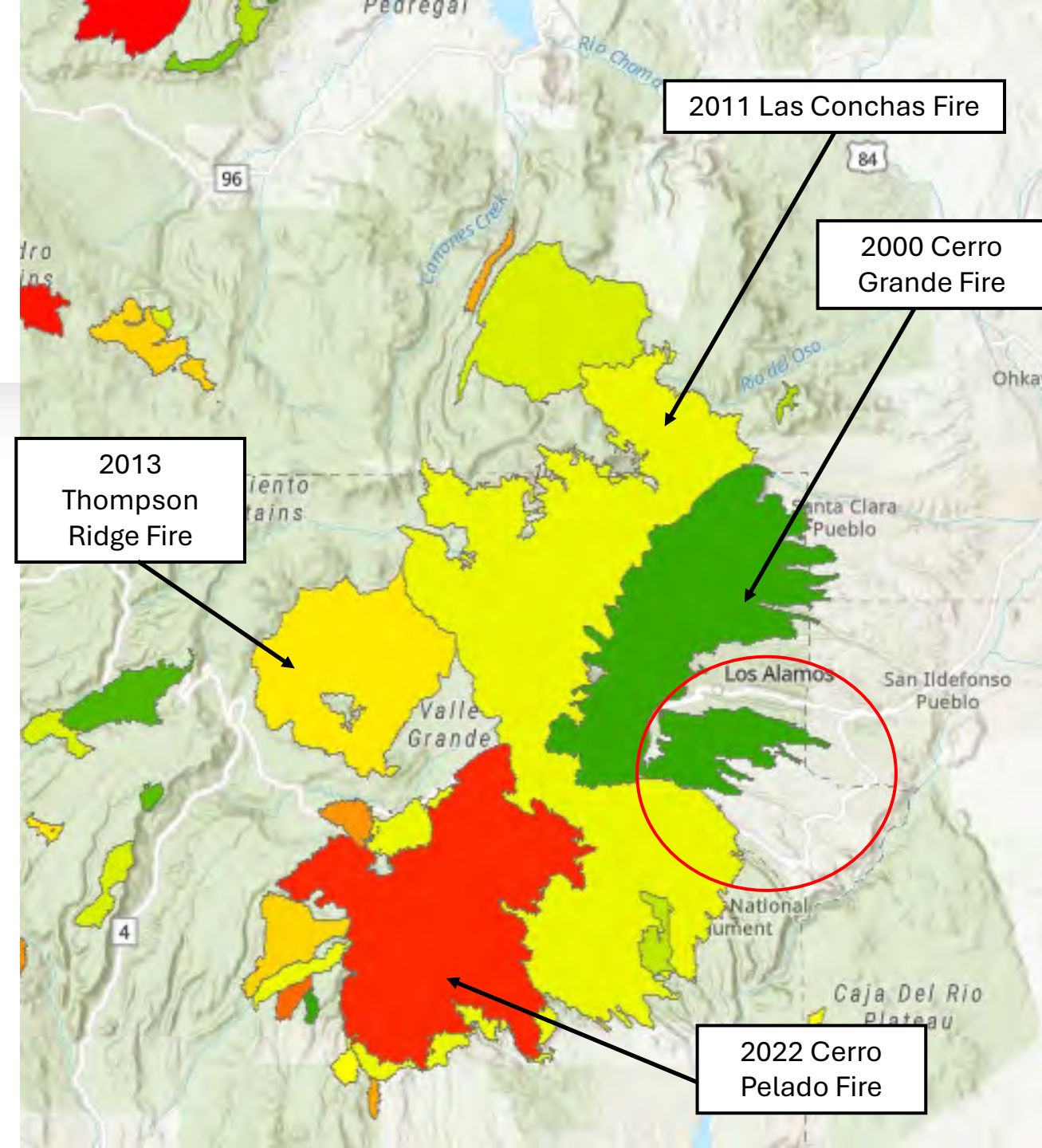
---

- **Understanding the Risk**
  - **Community Wildfire Protection Plan**
  - **Seasonal Outlook**
- **Ready, Set, Go!**
- **Defensible Space**
  - **What is Defensible Space?**
  - **Zones of Defensible Space**
  - **Defensible Home Assessments**
- **Code Red Emergency Alerts**
- **Family Communication Plan**
- **Questions**



# Understanding the Risk

- 2000 Cerro Grande Fire: 43,000 acres
- 2011 Las Conchas Fire: 148,000 acres
- 2013 Thompson Ridge Fire: 23,968 acres
- 2022 Cerro Pelado Fire: 45,604 acres
- CWPP Overview and Results

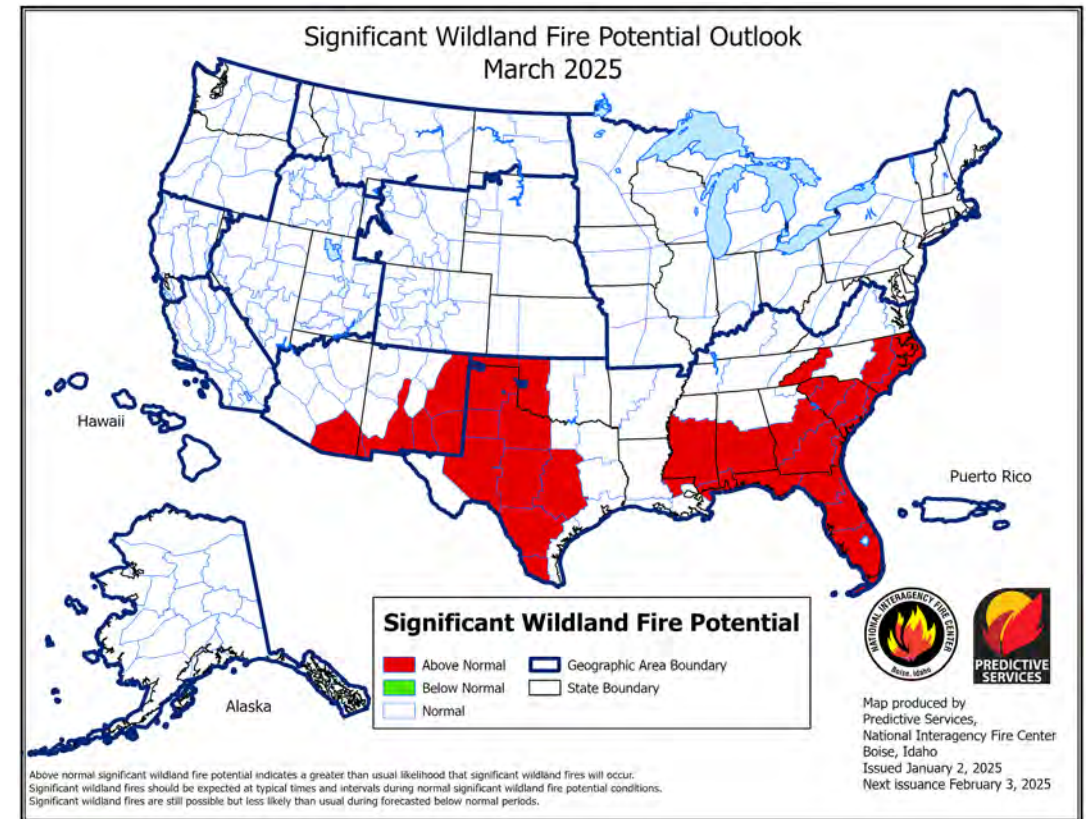
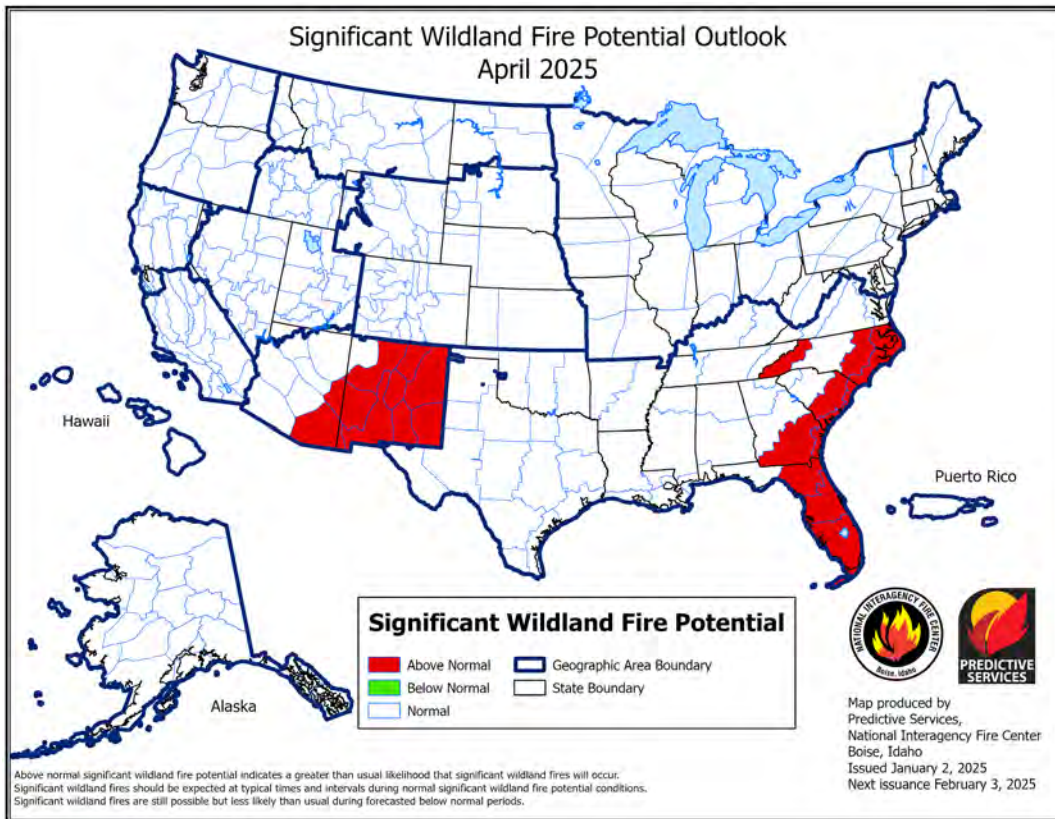




# Community Wildfire Protection Plan (CWPP)

- The CWPP was updated in 2022.
- The plan analyzes the wildland fire risk to Los Alamos County.
- The plan informs wildland fire mitigation through science-based risk analysis to target areas identified as high risk.
- The National Hazard and Risk Model (No-HARM) was the decision support tool for the wildfire hazard and risk assessment.
- The tool incorporates the predicted severity (hazard) and the predicted frequency (risk) of wildfire in each location. **(Results indicated each Fire Shed analyzed in analysis ranged from high to very high)**





# Seasonal Outlook

- Significant fire potential will be normal to above normal across the Southwest Area through April.
- Periods of critical winds combined with low humidity conditions are expected by late winter into the early spring focused along and east of New Mexico's central mountains



# Ready, Set, Go!

Ready	<p><b>Prepare your home and property:</b></p> <ul style="list-style-type: none"><li>• Create defensible space around your home</li><li>• Clear leaves, branches, and debris from gutters, roofs, and decks.</li><li>• Use fire-resistant building materials.</li></ul> <p><b>Have an emergency kit with essentials.</b></p> <p><b>Know your evacuation routes and have a plan in place</b></p>
Set	<p><b>Stay Informed:</b></p> <ul style="list-style-type: none"><li>• Monitor local news, alerts, and weather conditions.</li><li>• Use apps and services for fire-related updates.</li></ul> <p><b>Create a communication plan:</b></p> <ul style="list-style-type: none"><li>• Share your evacuation plan with family members.</li><li>• Have a safe meeting place if separated</li></ul>
Go	<p><b>Evacuate early:</b></p> <ul style="list-style-type: none"><li>• If you are told to evacuate, do not wait until the last minute.</li><li>• Follow evacuation routes, avoiding areas with heavy smoke or fire activity.</li></ul> <p><b>Take your emergency kit and valuables while prioritizing safety.</b></p>

# What is Defensible Space?

---



A DEFENSIBLE SPACE IS A BUFFER ZONE BETWEEN A STRUCTURE AND THE SURROUNDING WILDLAND AREA, DESIGNED TO REDUCE THE RISK OF FIRE SPREADING TO THE BUILDING.

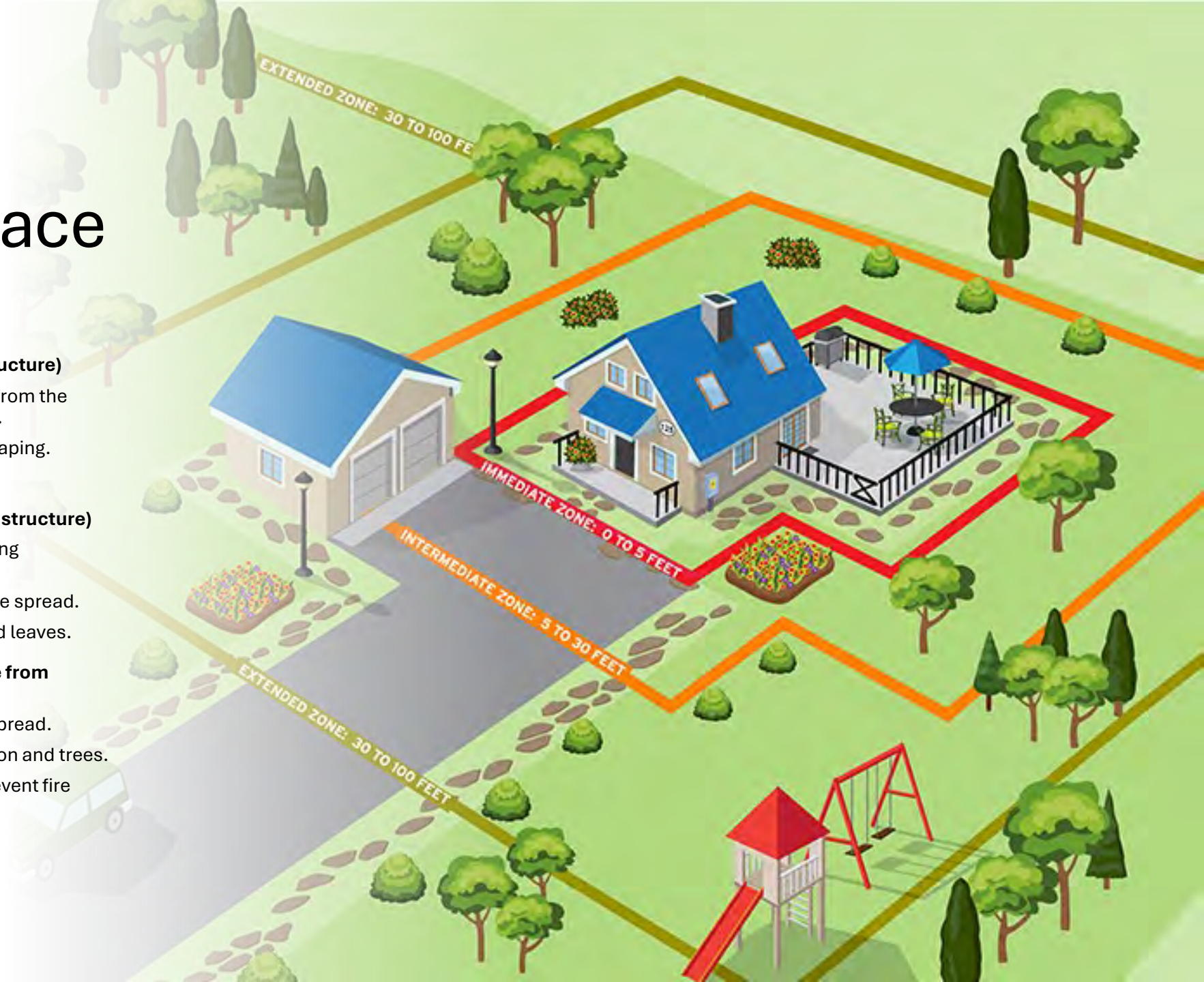


IT ALLOWS FIREFIGHTERS TO PROTECT HOMES AND PROPERTIES IN THE EVENT OF A WILDFIRE



# Zones of Defensible Space

- **Zone 1: Immediate Zone (0-5 feet from structure)**
  - Keep all flammable materials away from the home (e.g., wood piles, mulch, etc.).
  - Use fire-resistant plants and hardscaping.
  - Clear roof and gutters of debris
- **Zone 2: Intermediate Zone (5-30 feet from structure)**
  - Maintain a defensible zone by thinning vegetation.
  - Space trees and shrubs to reduce fire spread.
  - Remove dead and dry vegetation and leaves.
- **Zone 3: Extended Zone (30-100 feet or more from structure)**
  - Create a natural buffer to slow fire spread.
  - Remove excess dead or dry vegetation and trees.
  - Maintain space between trees to prevent fire from jumping from one to another





# Defensible Space Home Assessments

- LAFD has launched an onsite wildfire assessment program free of charge to home and business owners.
- LAFD has conducted more than 500 wildfire assessments to date throughout the community.
- To schedule a free wildland fire home or business assessment in Los Alamos or White Rock, email [kelly.sterna@lacnm.us](mailto:kelly.sterna@lacnm.us).
- Please visit the Wildland Division website for more resources and information:  
<https://www.losalamosnm.us/Health-and-Public-Safety/Fire-Services/Wildland-Division>





# Emergency Alerts

- **Sign Up for Alerts:** Register yourself and family members for timely emergency notifications.
- **Fast & Direct Communication:** The system automatically sends alerts to registered devices.
- **Recognize Alerts:** Calls come from 866-419-5000 (Emergency Notification). Save this number for easy recognition.
- **Stay Informed:** Receive important updates during emergencies directly from county officials
- **Sign up at:** [Community Notification Enrollment](#)
- **Text “*losalamos*” to *99411* to sign up for CodeRED emergency alerts**

# Family Emergency Plan

- **Create a Family Communication Plan**
  - Contact Information: List out family members' phone numbers, emails, and work/school addresses.
  - Out-of-Area Contact: Designate a friend or relative to be the central point of contact in case family members are separated.
  - Plan for Communication: Decide how to communicate if phone lines or cell service is down (e.g., text messages, social media, etc.).
- **Establish Meeting Locations**
  - Near Home: Identify a safe, easily accessible place to meet if you must evacuate (e.g., a neighbor's house or mailbox).
  - Outside of Town: Choose a location outside your immediate area in case of a widespread emergency or evacuation.
- **Prepare an Emergency Kit**
  - Essentials: Pack food, water, first aid, medications, flashlight, extra batteries, important documents, and personal items.
  - Pet Supplies: Include food, water, and pet medications if applicable.
- **Practice the Plan**
  - Drills: Regularly practice evacuations and communication to ensure everyone knows what to do during an emergency.



Ready



**New Mexicans have to make  
tough choices....**



**RED  
OR  
GREEN**



Visit the Los Alamos County's Office of Emergency Management and LAFD's Wildland Fire Division websites for resources discussed in this presentation:

<https://www.losalamosnm.us/Health-and-Public-Safety/Emergency-Management>

<https://www.losalamosnm.us/Health-and-Public-Safety/Fire-Services/Wildland-Division>

Email: [LACOEM@lacnm.us](mailto:LACOEM@lacnm.us)

# Questions?