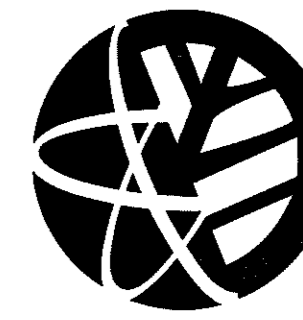
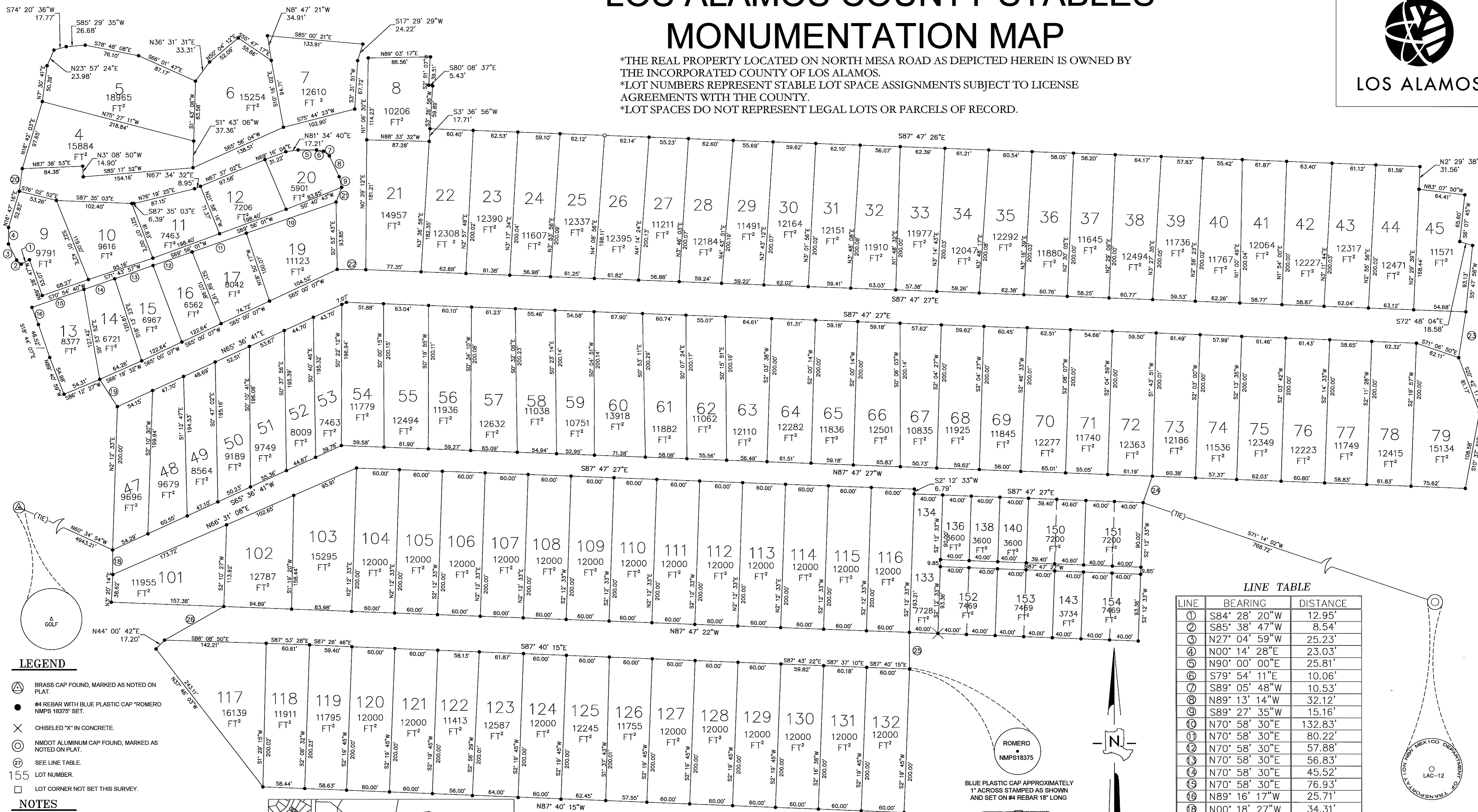


LOS ALAMOS COUNTY STABLES MONUMENTATION MAP



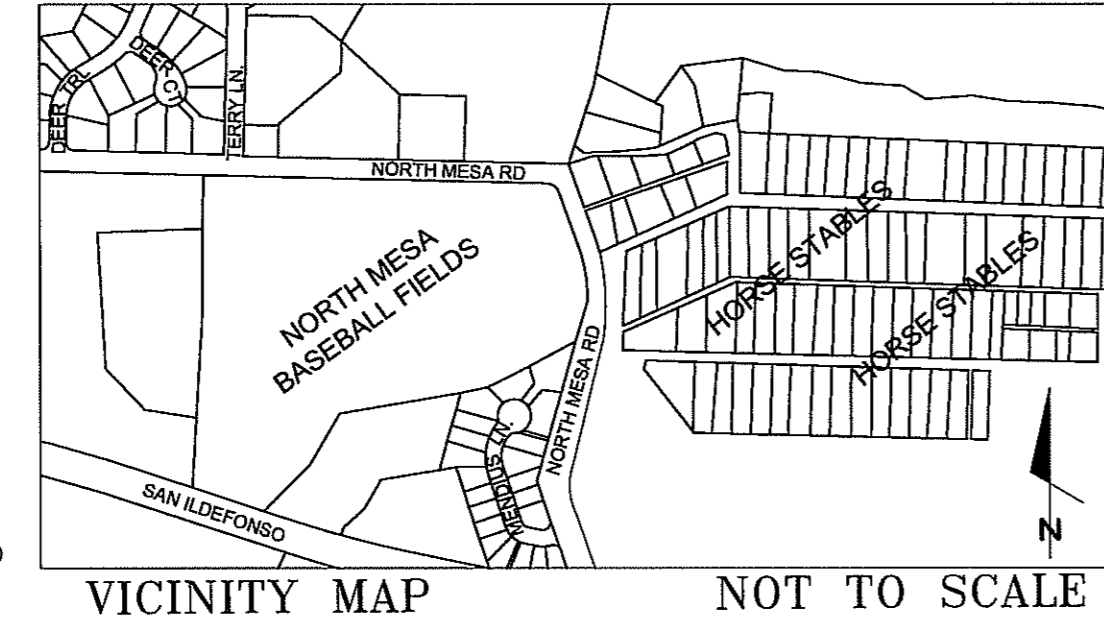
LOS ALAMOS

*THE REAL PROPERTY LOCATED ON NORTH MESA ROAD AS DEPICTED HEREIN IS OWNED BY THE INCORPORATED COUNTY OF LOS ALAMOS.
*LOT NUMBERS REPRESENT STABLE LOT SPACE ASSIGNMENTS SUBJECT TO LICENSE AGREEMENTS WITH THE COUNTY.
*LOT SPACES DO NOT REPRESENT LEGAL LOTS OR PARCELS OF RECORD.



- LEGEND**
- ⊙ BRASS CAP FOUND, MARKED AS NOTED ON PLAT.
 - #4 REBAR WITH BLUE PLASTIC CAP "ROMERO NMPLS 18375" SET.
 - ⊗ CHISELED "X" IN CONCRETE.
 - ⊙ NMDOT ALUMINUM CAP FOUND, MARKED AS NOTED ON PLAT.
 - Ⓢ SEE LINE TABLE.
 - 155 LOT NUMBER.
 - LOT CORNER NOT SET THIS SURVEY.

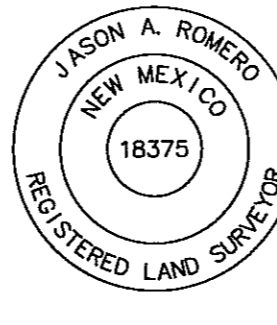
- NOTES**
- 1) FIELD SURVEY PERFORMED ON MARCH THROUGH JULY 2016.
 - 2) ALL BEARINGS ARE GROUND BEARINGS.
 - 3) ALL DISTANCES ARE GROUND DISTANCES, U.S. SURVEY FEET.
 - 4) THIS PROPERTY LIES WITHIN SECTIONS 10 AND 11, TOWNSHIP 19 NORTH, RANGE 6 EAST, NEW MEXICO PRINCIPAL MERIDIAN, LOS ALAMOS COUNTY, NEW MEXICO.
 - 5) ALL PREVIOUS EXISTING ALLY WAYS OTHER THEN ONES SHOWN ON THIS PLAT ARE NOW REMOVED WITH THIS PLAT.
 - 6) BASIS OF BEARING: NMDOT GPS CONTROL SURVEY MAP, "LOS ALAMOS CONTROL", PREPARED BY WILLIAM A. BOWERS, N.M.P.S. 11765 ON OCTOBER 9, 2008 AND FILED FOR RECORD IN THE SURVEY & MAPPING SPECIALTY SECTION OF THE NEW MEXICO DEPARTMENT OF TRANSPORTATION GENERAL OFFICE BUILDING LOCATED AT 1120 CERRILLOS RD., SANTA FE, NEW MEXICO. PHONE # (505) 827-5100.



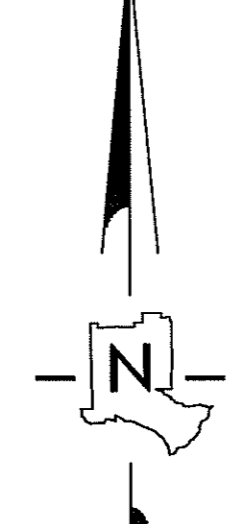
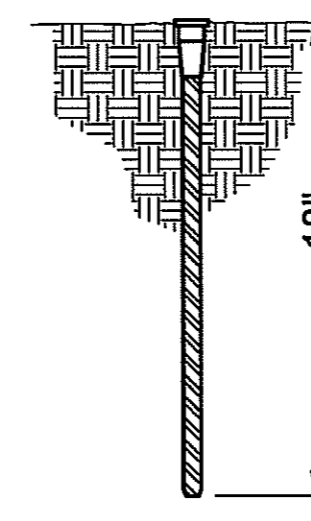
SURVEYOR'S CERTIFICATE

I HEREBY CERTIFY THAT THIS PLAT IS A TRUE REPRESENTATION OF A SURVEY COMPLETED UNDER MY PERSONAL SUPERVISION ON JULY OF 2016. TO THE BEST OF MY KNOWLEDGE, THE SURVEY AND PLAT ARE CORRECT, TRUE AND MEET THE MINIMUM STANDARDS FOR LAND SURVEYS IN NEW MEXICO.

Jason A. Romero 7/7/21 DATE
 JASON A. ROMERO, NMPLS 18375
 1000 CENTRAL AVE. STE. 160
 LOS ALAMOS, N.M. 87544

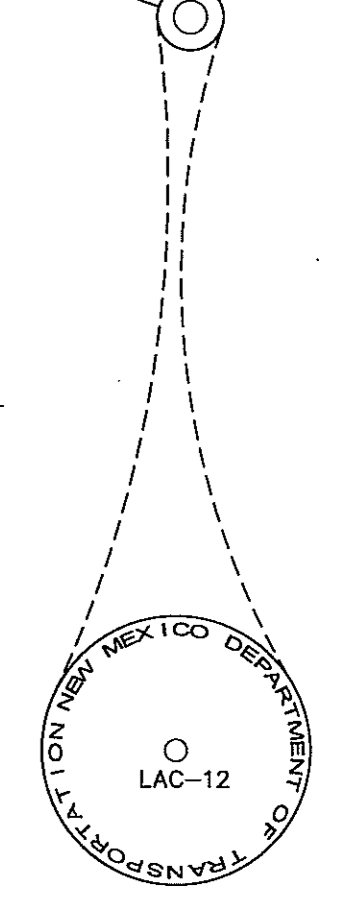


BLUE PLASTIC CAP APPROXIMATELY 1" ACROSS STAMPED AS SHOWN AND SET ON #4 REBAR 18" LONG



LINE TABLE

LINE	BEARING	DISTANCE
①	S84° 28' 20"W	12.95'
②	S85° 38' 47"W	8.54'
③	N27° 04' 59"W	25.23'
④	N00° 14' 28"E	23.03'
⑤	N90° 00' 00"E	25.81'
⑥	S79° 54' 11"E	10.06'
⑦	S89° 05' 48"W	10.53'
⑧	N89° 13' 14"W	32.12'
⑨	S89° 27' 35"W	15.16'
⑩	N70° 58' 30"E	132.83'
⑪	N70° 58' 30"E	80.22'
⑫	N70° 58' 30"E	57.88'
⑬	N70° 58' 30"E	56.83'
⑭	N70° 58' 30"E	45.52'
⑮	N70° 58' 30"E	76.93'
⑯	N89° 16' 17"W	25.71'
⑰	N00° 18' 27"W	34.31'
⑱	N32° 53' 09"W	45.27'
⑳	N07° 33' 42"E	31.81'
㉑	S20° 52' 24"W	22.07'
㉒	S89° 20' 11"E	39.94'
㉓	S09° 01' 20"W	64.78'
㉔	S19° 30' 55"W	39.13'
㉕	N00° 12' 00"W	51.16'
㉖	N60° 31' 34"E	95.41'



24879 6/10/2024 03:18 PM
 Book: 194 Page: 664 Name: D Maestas - County Clerk
 Los Alamos County, NM ANNA H. ARCHULETA - Deputy
 Plat Page: 61-1

Los Alamos County Stables Area



- 12" culvert
- 15" culvert
- 18" culvert
- 24" culvert
- 36" culvert
- Open-air culvert
- Ditch
- Shallow channel
- Trails
- Lots