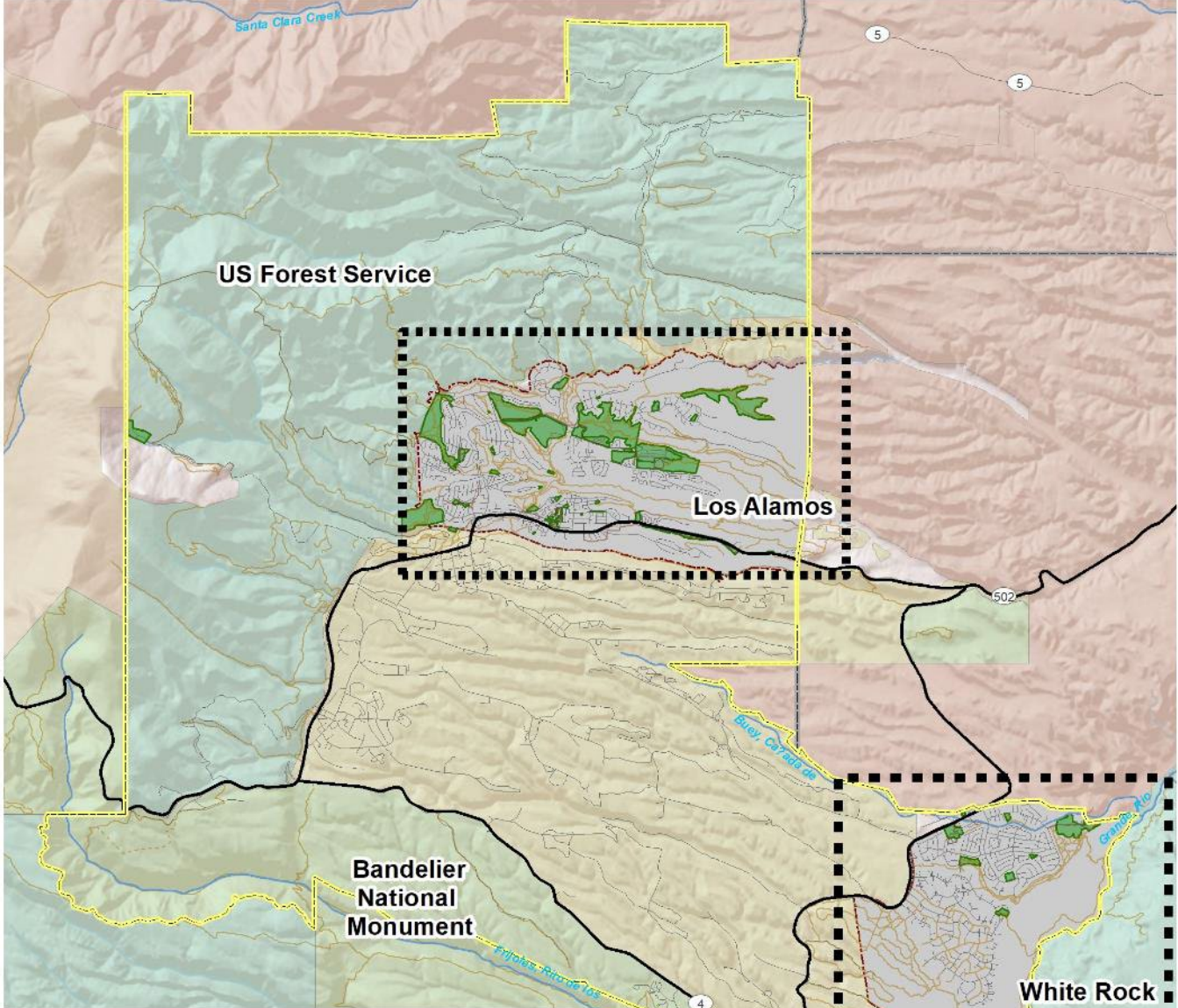


Inventory & Level of Service

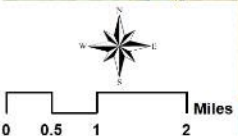


Los Alamos County System



Legend

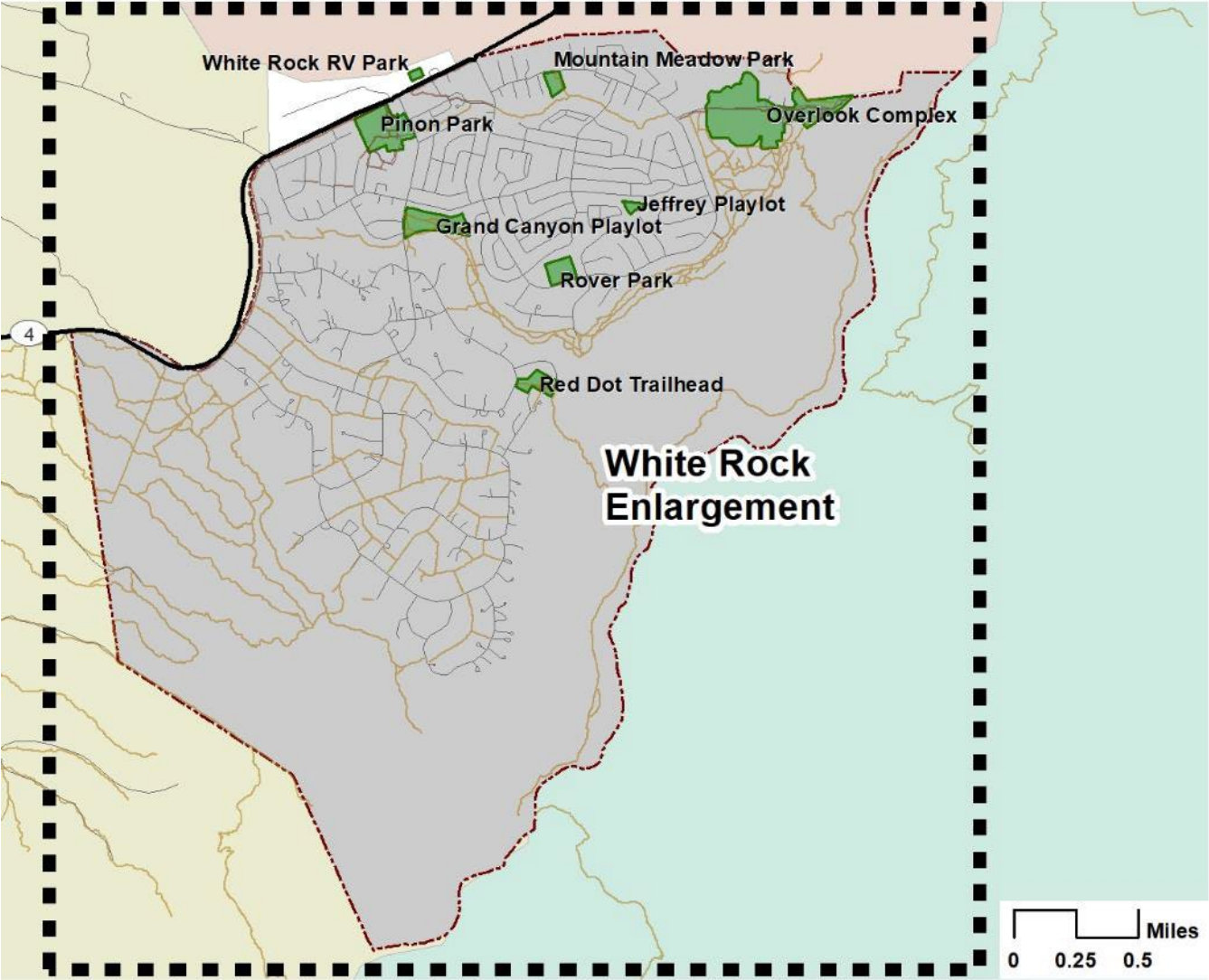
- | | | |
|----------------------|------------------------------------|-------------------------------|
| — Highway/Major Road | ■ Park/Facility Location | ■ Other Agency Lands |
| — Other Road/Street | ■ Los Alamos/White Rock Boundaries | ■ Dept of Energy |
| ~ River/Stream | ■ Los Alamos County Boudary | ■ Forest Service |
| — Paved Trail | ■ Other County Boundaries | ■ Native American Reservation |
| — Primary Trail | | ■ National Preserve |
| — Proposed Trail | | ■ Bandelier National Monument |



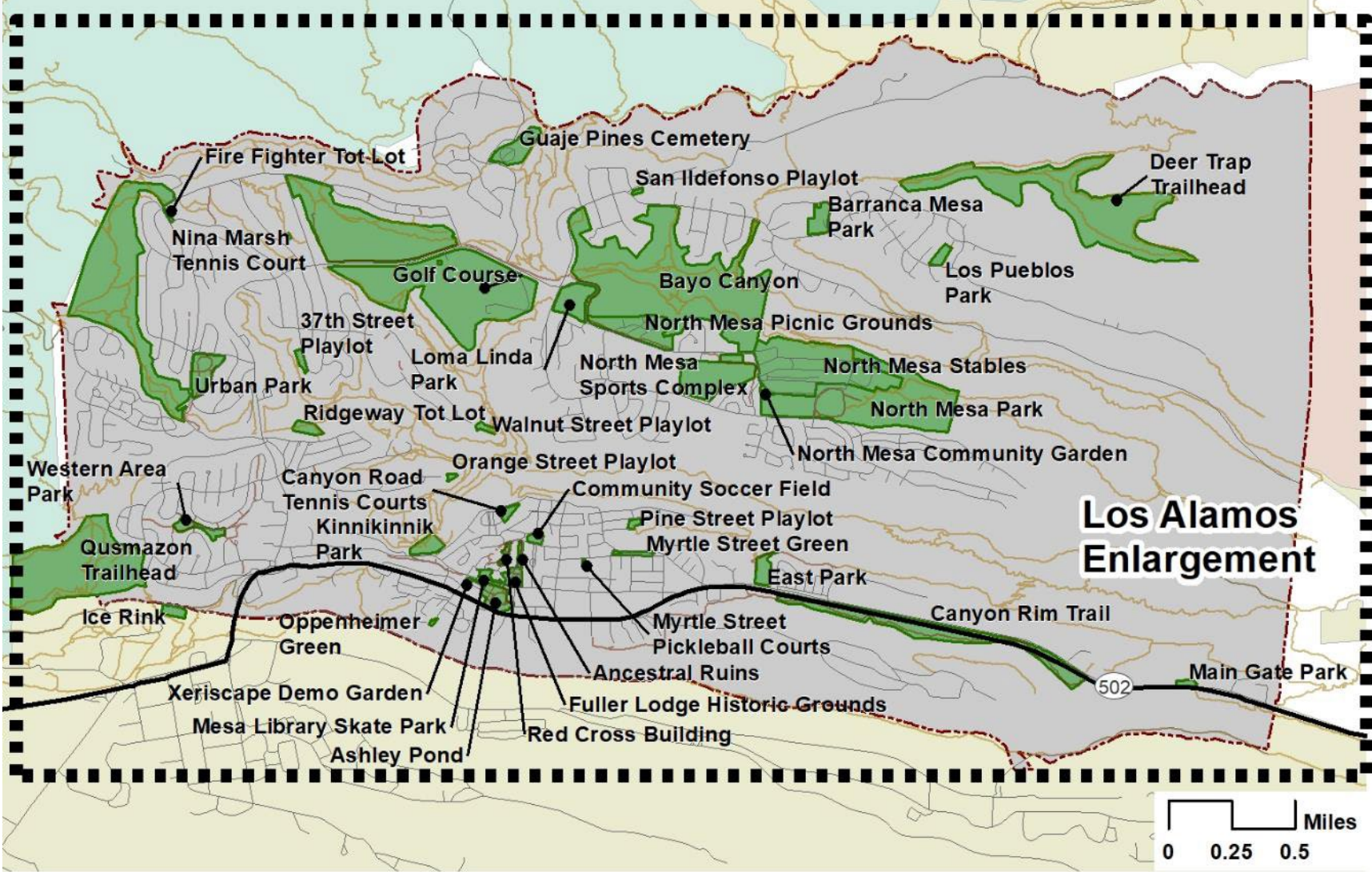
Copyright:(c) 2014 Esri



White Rock



Los Alamos





- Trails, trails, trails
 - Trail wayfinding
 - Many of the trailhead kiosks need updated
 - Distinguish or formalize trailheads and trail access points
- Develop consistent standards
 - ADA access
 - Picnic tables
 - Playground surfacing and curbing
 - Park pathways and trails
- Many park parking lots are in poor condition
- Many grass/turf and fields areas are in very poor condition
- Other Providers
 - Some schools are open and accessible other grounds are not
 - Private swimming pool facilities are very dated

Inventory Site Visits



URBAN PARK



- ◆ Component
- Location
- ◆ AltPro Components
- Paved Trail
- Proposed Trail
- + Indoor Facility
- County Boundary
- AltPro Locations
- Primary Trail



Source: Esri, DeLorme, GeoEye, Earthstar Geographics, CNES/Airbus DS, USDA, USGS, AeroGRID, IGN, and the GIS User Community

URBAN PARK

Initial Inventory Date: 3/4/2022

64 Total Neighborhood GRASP% Score 93.6 Total Community GRASP% Score Approximate Park Acreage: 9.0
 Owner: Los Alamos

Drinking Fountains	2	Shade	2	Design and Ambiance
Seating	2	Trail Connection	0	
BBQ Grills	2	Park Access	2	2
Dog Pick-Up Station	2	Parking	2	
Security Lighting	1	Seasonal Plantings	0	
Bike Parking	0	Ornamental Plantings	1	
Restrooms	2	Picnic Tables	2	

General Comments

Diverse components in an aging neighborhood park

Components with Score

MAPID	Component	Quantity	Lights	Neighborhood Score	Community Score	Comments
L013	FARCEL	1		2	2	
C167	Educational Experience	1		2	2	Born learning interpretive signage
C146	Other	1		1	1	What is this? Raised gravel bed
C104	Loop Walk	1		2	2	
C103	Playground, Local	1		1	1	Sand surface
C102	Wall Ball Court	2		1	1	Concrete wall on pad
C101	Tennis Court	4	Y	3	3	Lighting improvement planned and funded for spring 2022
C100	Shelter, Large	1		2	2	
C099	Basketball Court	1		2	2	Cracking surface
C098	Diamond Field, Practice	2		2	2	Backstops only
C097	Open Turf	1		2	2	
C096	Volleyball Court	1		1	1	Sand with wall along west side

Mapping Location and Quality of Components

Sort for things such as playgrounds

Map ID	PARK/LOCATION	COMPONENT	QUANTITY	NEIGHBORHOOD	COMMUNITY	COMMENTS
				SCORE	SCORE	
C006	37TH STREET PLAYLOT	Playground, Local	1	1	1	Minimal
C015	BARRANCA MESA PARK	Playground, Local	1	2	2	Older on EWF
C025	COMMUNITY SOCCER FIELD	Playground, Local	1	1	1	Minimal set
C027	EAST PARK	Playground, Local	2	2	2	On EWF. Seperate swings and playset areas.
C034	FIRE FIGHTER PARK TOT LOT	Playground, Local	1	2	2	Small older set on EWF
C040	GRAND CANYON PLAYLOT	Playground, Local	1	1	1	Old and on sand
C043	JEFFREY PLAYLOT	Playground, Local	1	1	1	Smaller playset
C045	MESA LIBRARY SKATE PARK	Playground, Local	1	2	2	Small set on EWF with plastic edging
C047	LOMA LINDA PARK	Playground, Local	1	1	1	Oddly placed
C049	MOUNTAIN MEADOW PARK	Playground, Local	1	1	1	Minimal playset
C058	NORTH MESA PARK	Playground, Local	1	2	2	
C061	NORTH MESA PICNIC GROUNDS	Playground, Local	1	2	2	
C065	ORANGE STREET PLAYLOT	Playground, Local	1	1	1	Minimal and old
C069	OVERLOOK COMPLEX	Playground, Local	1	2	2	
C074	PINE STREET PLAYLOT	Playground, Local	1	2	2	Newer play set
C078	PINON PARK	Playground, Local	1	1	1	Older fading set on
C086	RIDGEWAY TOT LOT	Playground, Local	1	1	1	Minimal
C087	ROVER PARK	Playground, Local	1	2	2	Larger set on EWF
C095	SAN ILDEFONSO PLAYLOT	Playground, Local	1	1	1	Dinosaur set, on sand.
C103	URBAN PARK	Playground, Local	1	1	1	Sand surface
C105	WALNUT STREET PLAYLOT	Playground, Local	1	1	1	Minimal
C111	WESTERN AREA PARK	Playground, Local	1	1	1	Minimal on EWF



Los Alamos Neighborhood Scores		Los Alamos Community Scores	
Scores	Percent %	Scores	Percent %
0	2%	0	0%
1	23%	1	24%
2	71%	2	72%
3	4%	3	4%

National Dataset Neighborhood Scores		National Dataset Community Scores	
Scores	Percent %	Scores	Percent %
0	3%	0	2%
1	11%	1	11%
2	79%	2	78%
3	8%	3	10%

Overall, we saw scores vary from the national database

LOCATION	Total Components	
		GIS Acres
NORTH MESA PARK	16	74.6
URBAN PARK	16	9.0
NORTH MESA PICNIC GROUNDS	10	16.9
BARRANCA MESA PARK	9	5.4
EAST PARK	8	4.3
NORTH MESA SPORTS COMPLEX	8	21.3
ASHLEY POND	7	5.9
CAMP MAY	5	26.9
GOLF COURSE	5	164.3
NORTH MESA STABLES	5	55.7
COMMUNITY SOCCER FIELD	4	1.4
MESA LIBRARY SKATE PARK	4	1.3
RIDGEWAY TOT LOT	4	2.7
WALNUT STREET PLAYLOT	4	1.3
WESTERN AREA PARK	4	4.0
37TH STREET PLAYLOT	3	1.3
ANCESTRAL RUINS	3	1.0
CANYON RIM TRAIL	3	36.5
CANYON ROAD TENNIS COURTS	3	1.7
FULLER LODGE HISTORIC GROUNDS	3	2.9

MYRTLE STREET PICKLEBALL COURTS	3	0.2
NINA MARSH TENNIS COURT	3	0.2
PINE STREET PLAYLOT	3	1.0
XERISCAPE DEMO GARDEN	3	0.5
BAYO CANYON TRAILHEAD	2	146.3
DEER TRAP TRAILHEAD	2	88.7
ICE RINK	2	2.4
LOMA LINDA PARK	2	9.9
MITCHELL TRAILHEAD	2	90.3
ORANGE STREET PLAYLOT	2	0.5
RED CROSS BUILDING	2	1.2
FIRE FIGHTER PARK TOT LOT	1	0.4
GUAJE PINES CEMETERY	1	8.7
MYRTLE STREET GREEN	1	1.5
NORTH MESA COMMUNITY GARDEN	1	0.5
NORTH MESA RV STORAGE	1	1.8
OPPENHEIMER GREEN	1	0.3
QUEMAZON TRAILHEAD	1	79.4
SAN ILDEFONSO PLAYLOT	1	0.5
LOS PUEBLOS PARK	0	2.3
LOS ALAMOS SUBTOTALS:	164	880.2

Inventory Summary

GRAND CANYON PLAYLOT	4	12.7
JEFFREY PLAYLOT	3	1.6
MOUNTAIN MEADOW PARK	3	3.4
OVERLOOK COMPLEX	23	54.7
PINON PARK	10	18.9
RED DOT TRAILHEAD	1	6.2
ROVER PARK	11	6.2
WHITE ROCK RV PARK	2	1.2
WHITE ROCK SUBTOTALS:	57	104.9
TOTALS:	221	985.1

Trail and Trailhead Site Visits



▲ INVENTORY:

20 trailheads and 34 trail access points were surveyed in the Los Alamos County Trail Network

▲ NOTEWORTHY:

Centrally located, especially scenic, and hidden-gem trails offer improvement opportunities to take advantage of a unique and multipurpose trail system

▲ INITIAL THOUGHTS:

Some incredibly scenic trailheads & trail access points could be made more accessible and better utilized with basic improvements like shade, seating and signage. A mix of paved, gravel, and rugged trails offer users a variety of recreation and transportation options; wayfinding signage throughout could help trail users navigate this extensive and varied system and take advantage of lesser-known gems. High-traffic, centrally-located trailheads and access points could be prioritized to encourage alternative transportation and make residents/visitors more aware of the trail network.





Name:

21. Rendija Canyon Trailhead

Along Range Rd

Total Score: 1.7

Evaluation of Comfort and Convenience Features

Component	Count	Condition, Comfort & Convenience (0-3)
Trailhead Signage	0	0
Parking	1	2
Directional Signage	1	2
Shade	0	0
Informational Kiosk	0	0
Trash Receptacles	0	0
Restrooms	0	0
Lights	0	0
Seating	0	0
Water Fountain	0	0
Dog Pick-Up Station	0	0
TOTAL	2	4

Mapping Trailheads and Trail Access Points



Gravel and bare earth parking area



Trail access point from parking area



Directional signage at access point



Parking and old signs as seen from trail

Evaluation of Trailhead Design and Ambiance

	Overall Ambiance & Design (1-3)
Trailhead/Trail Access Point	1

Neighborhood & Community Score

Criteria	Neighborhood Score (1-3)	Community Score (1-3)
Location & Trail Access	1	1
Trail Connections	2	2
AVERAGE	1.5	

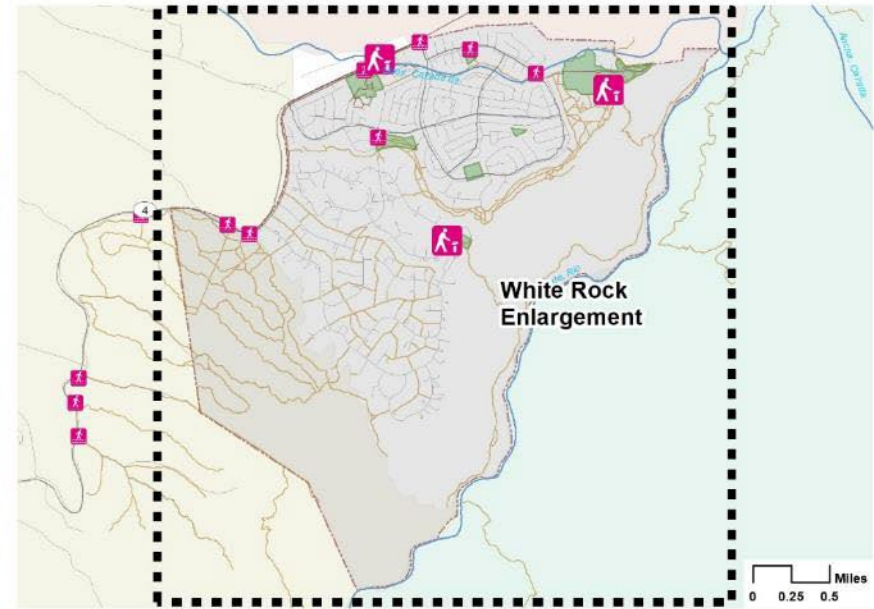
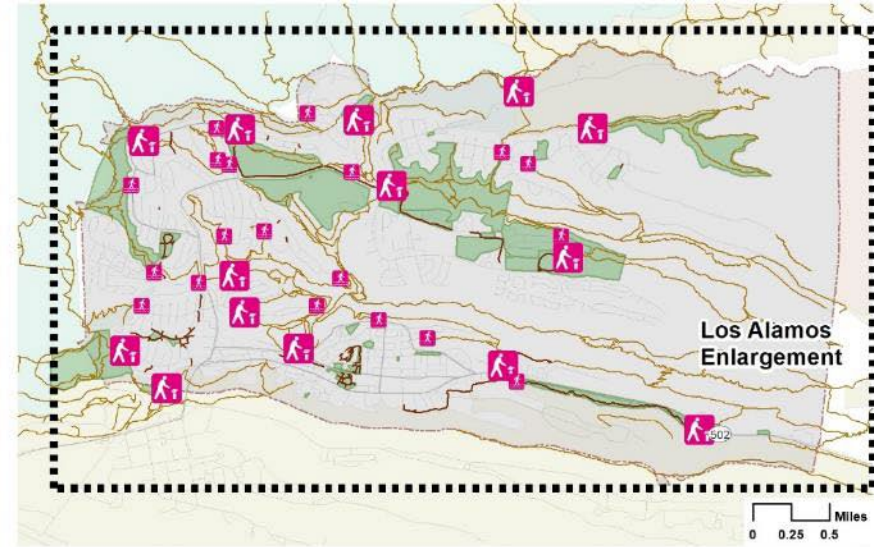
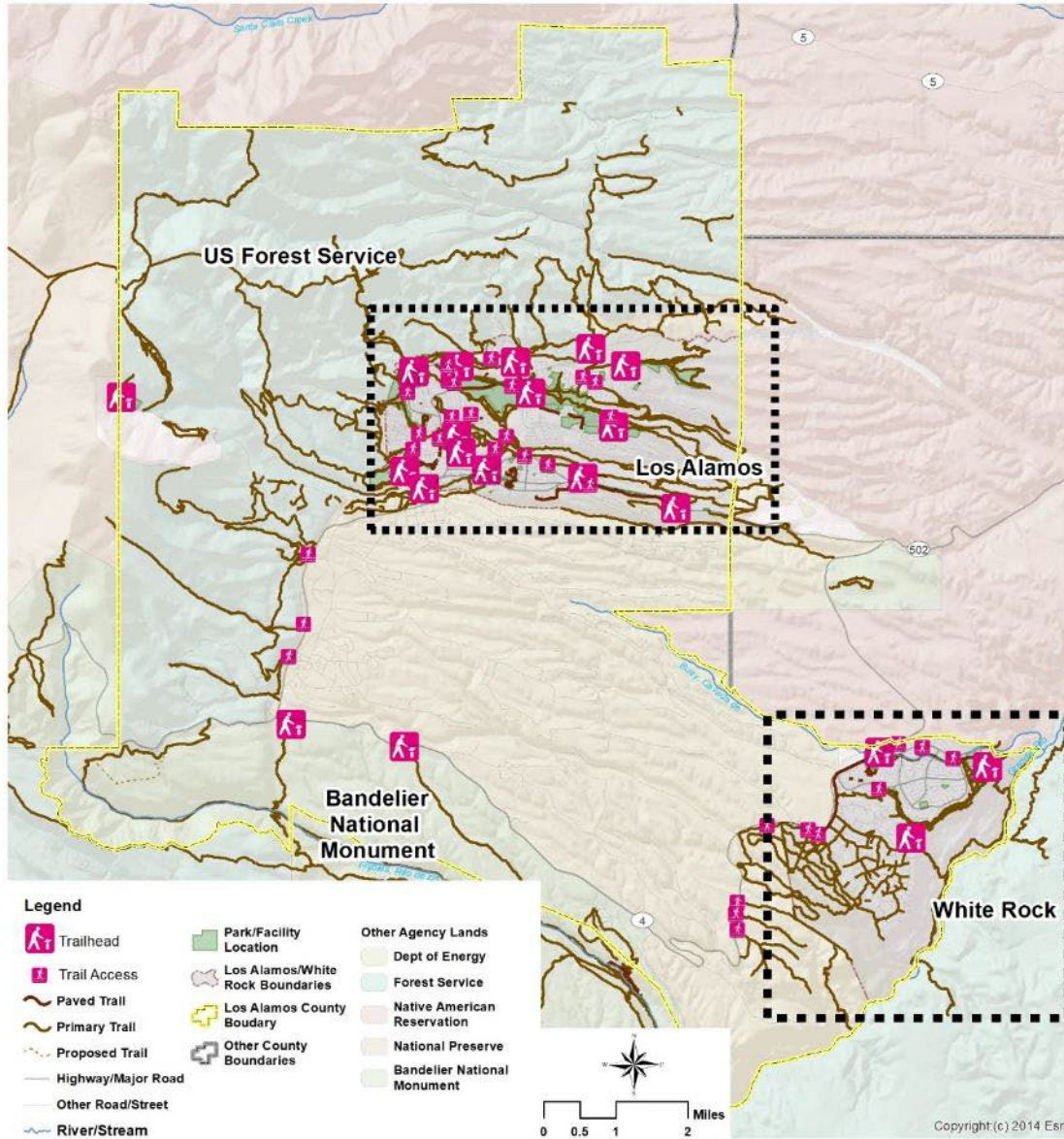
Comments:

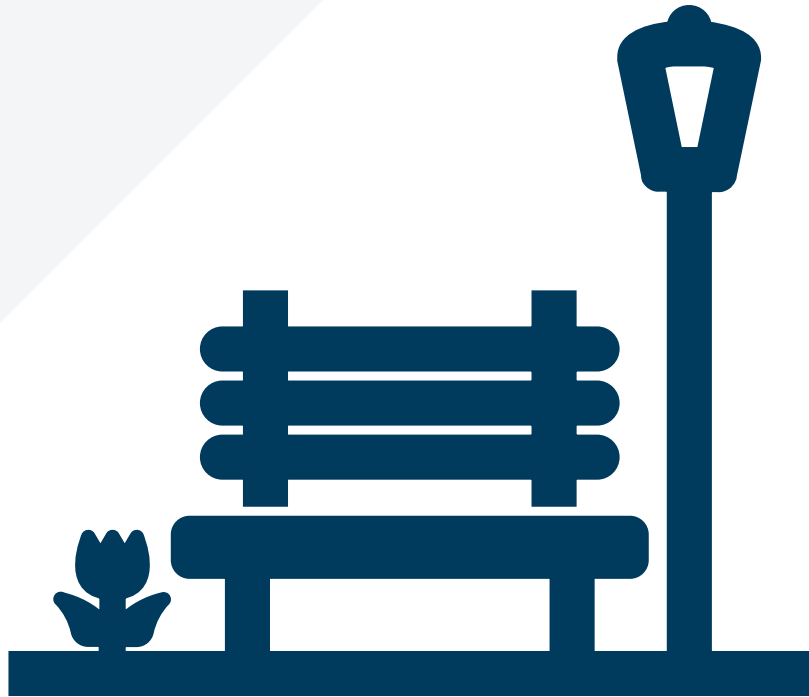
- As a primary access point to the Rendija Canyon Trail and with an existing undeveloped parking area, this access point could be a high priority candidate for trailhead amenity improvements
- Currently this trailhead lacks most amenities and proper/standard signage

Recommended Classification (Trailhead or Trail Access Point):

Trailhead

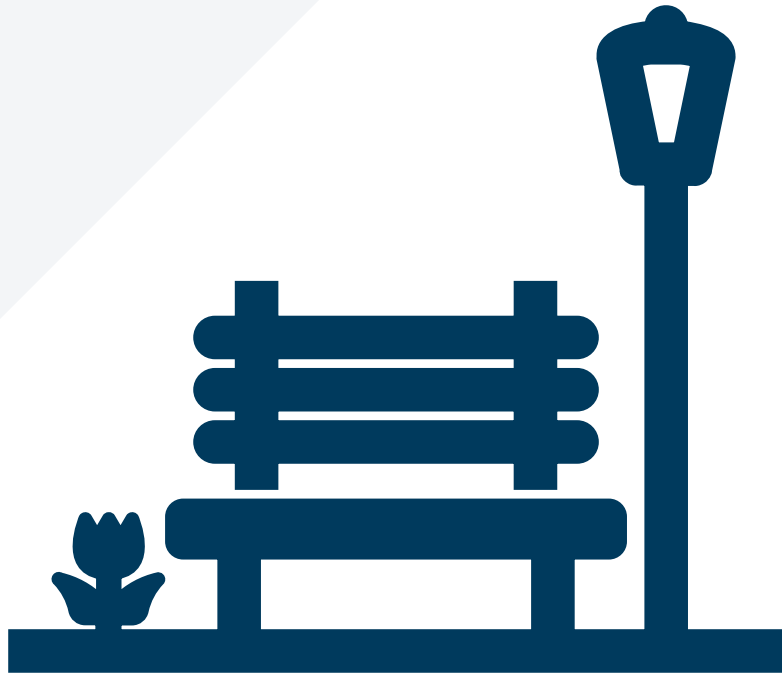
The Trails System





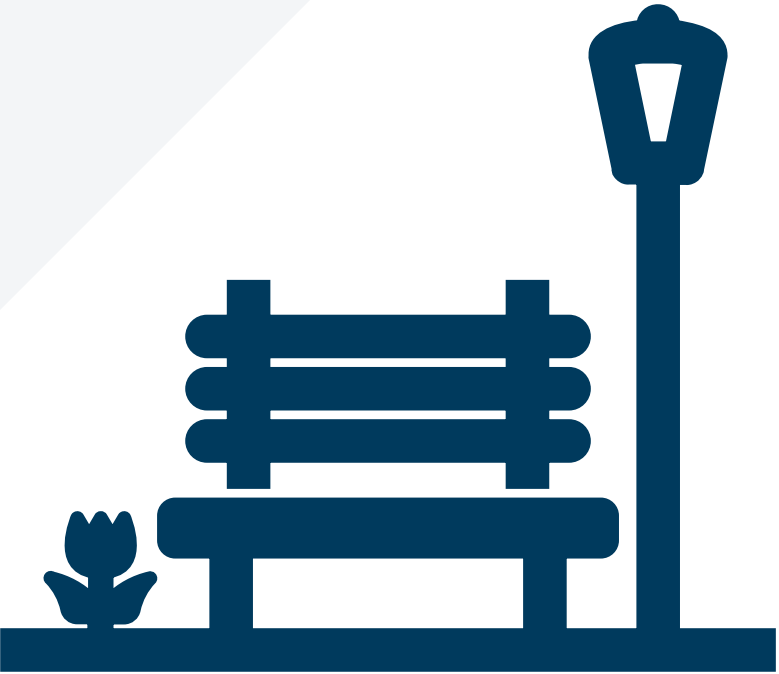
Park / Facility Scores

Community Parks



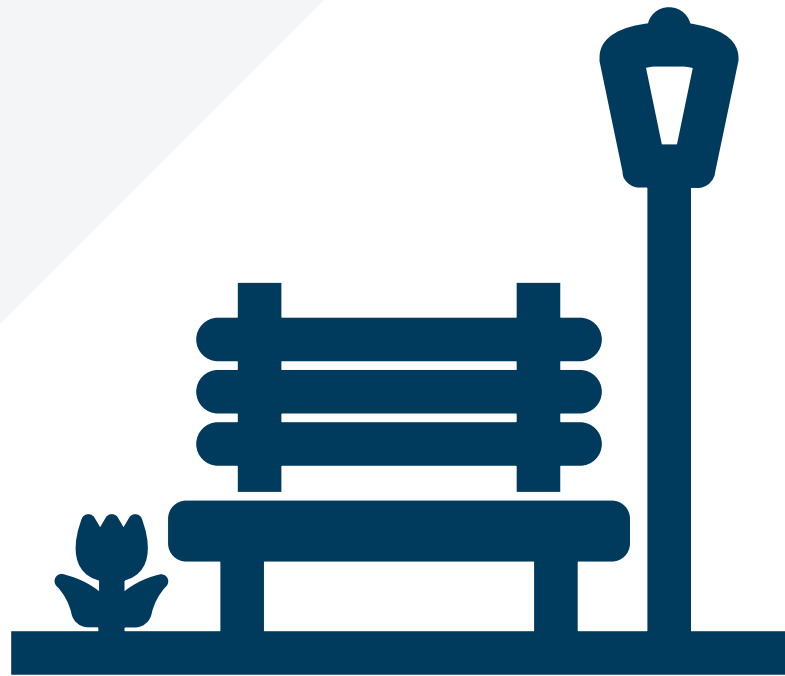
Community Park		
LOCATION	GRASP® Neighborhood Score	GRASP® Community Score
URBAN PARK	54	93.6
ROVER PARK	48	57.6
PINON PARK	40.8	55.2
NORTH MESA PICNIC GROUNDS	38.4	52.8
BARRANCA MESA PARK	36	45.6
ASHLEY POND	44.4	44.4
EAST PARK	38.4	43.2
NORTH MESA PARK	20.4	31.2
FULLER LODGE HISTORIC GROUNDS	19.2	19.2

Pocket Parks



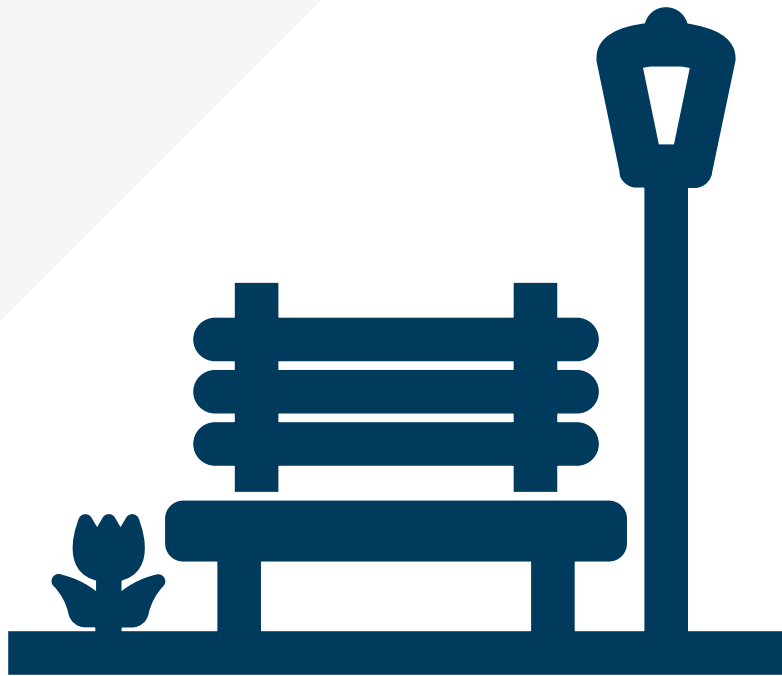
Pocket Park		
LOCATION	GRASP® Neighborhood	GRASP® Community
	Score	Score
WALNUT STREET PLAYLOT	19.8	19.8
RIDGEWAY TOT LOT	15.4	15.4
WESTERN AREA PARK	15.4	15.4
37TH STREET PLAYLOT	13.2	13.2
FIRE FIGHTER PARK TOT LOT	8.8	8.8
GRAND CANYON PLAYLOT	8.8	8.8
PINE STREET PLAYLOT	7.7	7.7
MOUNTAIN MEADOW PARK	6.6	6.6
SAN ILDEFONSO PLAYLOT	6.6	6.6
JEFFREY PLAYLOT	7.7	5.5
LOMA LINDA PARK	5.5	5.5
ORANGE STREET PLAYLOT	5.5	5.5

Sports Parks



Sports Park		
LOCATION	GRASP®	GRASP®
	Neighborhood Score	Community Score
OVERLOOK COMPLEX	61.2	99.6
ICE RINK	23.4	30.6
GOLF COURSE	24	28.8
NORTH MESA SPORTS COMPLEX	15.4	26.4
COMMUNITY SOCCER FIELD	17.6	17.6
CANYON ROAD TENNIS COURTS	11	15.4
NINA MARSH TENNIS COURT	8.8	8.8
MYRTLE STREET PICKLEBALL COURTS	5.5	6.6

Special Use Facilities



Special Use		
	GRASP® Neighborhood Score	GRASP® Community Score
NORTH MESA STABLES	21.6	31.2
MESA LIBRARY SKATE PARK	26.4	26.4
ANCESTRAL RUINS	19.8	19.8
XERISCAPE DEMO GARDEN	17.6	17.6
RED CROSS BUILDING	14.4	14.4
WHITE ROCK RV PARK	12	12
GUAJE PINES CEMETERY	8.8	8.8
MAIN GATE PARK	6.6	8.8
CAMP MAY	8.4	8.4
NORTH MESA COMMUNITY GARDEN	4.4	4.4
MYRTLE STREET GREEN	4.4	4.4
NORTH MESA RV STORAGE	4.4	4.4
OPPENHEIMER GREEN	4.4	4.4
LOS PUEBLOS PARK	2.2	2.2

Comparisons and Benchmarks



1

Top
300 of
all park
scores

31049

8

5

5
5
3
8

2

Top
10% of
all park
scores

Components, Agencies, Parks

Comparisons (National Dataset)

GRASP® Benchmarking

(With Comparable Population)

↑ 12.7

Park per 1,000 People

Fruita, CO – 1.7
Canby, OR – 1.2
Golden, CO – 1.2
Angleton, TX – .7

↑ 13

Components/1k Pop

Golden, CO – 9
Fruita, CO – 7
Angleton, TX – 5
Canby, OR – 4

↑ 150

Total Locations

Golden, CO – 25
Fruita, CO – 23
Canby, OR – 23
Angleton, TX – 13

↑ 15

Components Per Location

Fruita, CO – 4
Canby, OR – 3
Angleton, TX – 8
Golden, CO – 7

↓ 23

Average Score Per Location

Fruita, CO – 20
Canby, OR – 16
Angleton, TX – 33
Golden, CO – 31

NRPA 2022 Park Metrics

(With comparable population)

2022 NRPA Agency Performance Review: Park and Recreation Agency Performance Benchmarks						
Outdoor Park and Recreation Facilities						
	Outdoor Facility	Agencies Offering this Facility	Median Number of Residents per Facility	Los Alamos County Current Quantity	Los Alamos County Residents per Facility	Need to add to meet NRPA median
Playgrounds	Playgrounds	95%	1,986	23	818	-14
Courts	Basketball courts*	86	3,750	3	6,268	2
	Tennis courts	78	2,723	18	1,045	-11
	Pickleball courts	18	3,446	6	3,134	-1
Diamond Fields	Diamond fields: baseball – youth	79	3,107	15	1,254	-9
	Diamond fields: softball fields – adult	65	5,667			-12
	Diamond fields: softball fields – youth	62	5,339			-11
	Diamond fields: baseball – adult	54	7,954			-13
Rectangular Fields	Rectangular fields: multipurpose	68	4,362	9	2,089	-5
	Rectangular fields: soccer field – youth	50	3,504			-4
	Rectangular fields: soccer field – adult	44	8,017			-7
	Rectangular fields: football field	35	8,004			-7
Dog parks	Dog parks	67	11,100	4	4,701	-2
Skate parks	Skate parks	39	11,100	2	9,402	0
Golf	Golf Regulation 18-hole courses	29	9,183	1	18,803	1
	Driving range stations	26	5,055	1	18,803	3
Ice rinks	Ice rinks	18	7,997	1	18,803	1
	<i>Comparison based on median for less than 20,000 population comparison</i>					
Surplus						
Possible Deficit						
*County Parks also have 8 Practice Basketball Courts						

NRPA 2022 Park Metrics

(With comparable population)

		2021 All Acres	2022 Developed Park Acres*	2022 NRPA Median for Acres per Capita	Developed Parks	2022 NRPA Median Residents per Park
INVENTORY						
Los Alamos County Parks		985	392		39	
Current Ratio of Park Acres per 1000 Population						
CURRENT POPULATION 2021	18,803					
Current Ratio of Park Acres per 1000 Population		52.4	20.8	12.9	482	1,233
PROJECTED POPULATION - 2026	19,322					
Total acres needed to maintain current ratio park acres with growth		1012	403			
Acres to add of developed Parks			11			
<i>*Not including trailhead/open space properties, golf course, cemetery, or currently undeveloped parcels</i>						

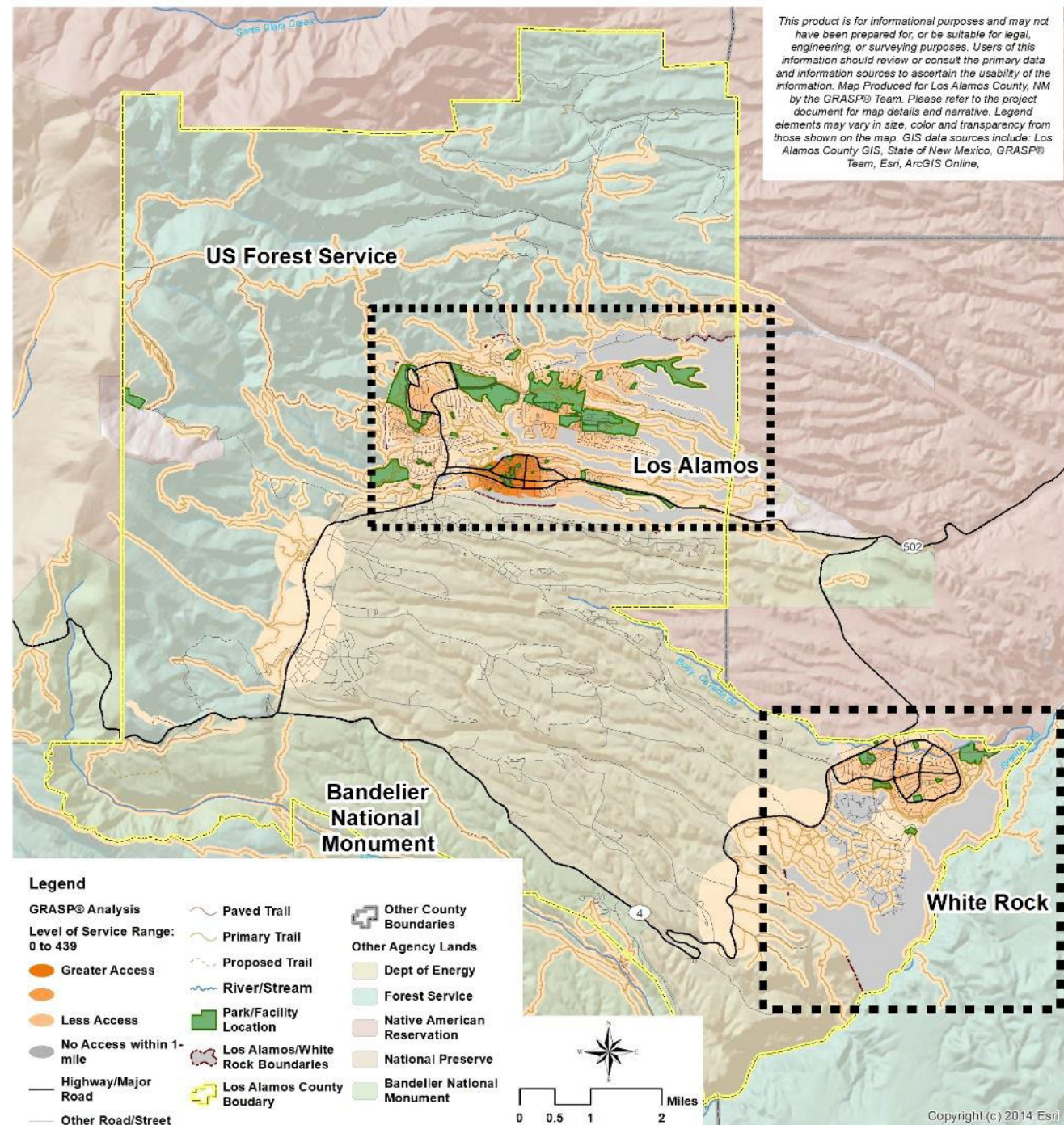
System Analysis

A Look at Distribution, Equity and Gaps

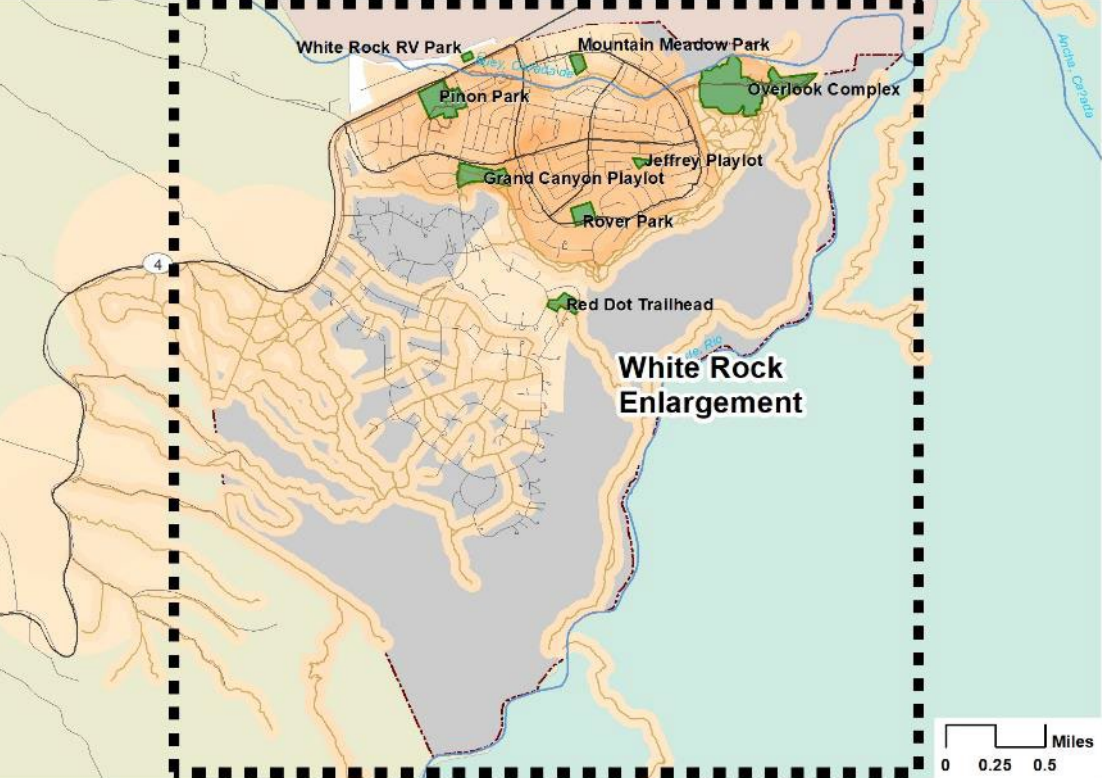


10 – min Walk

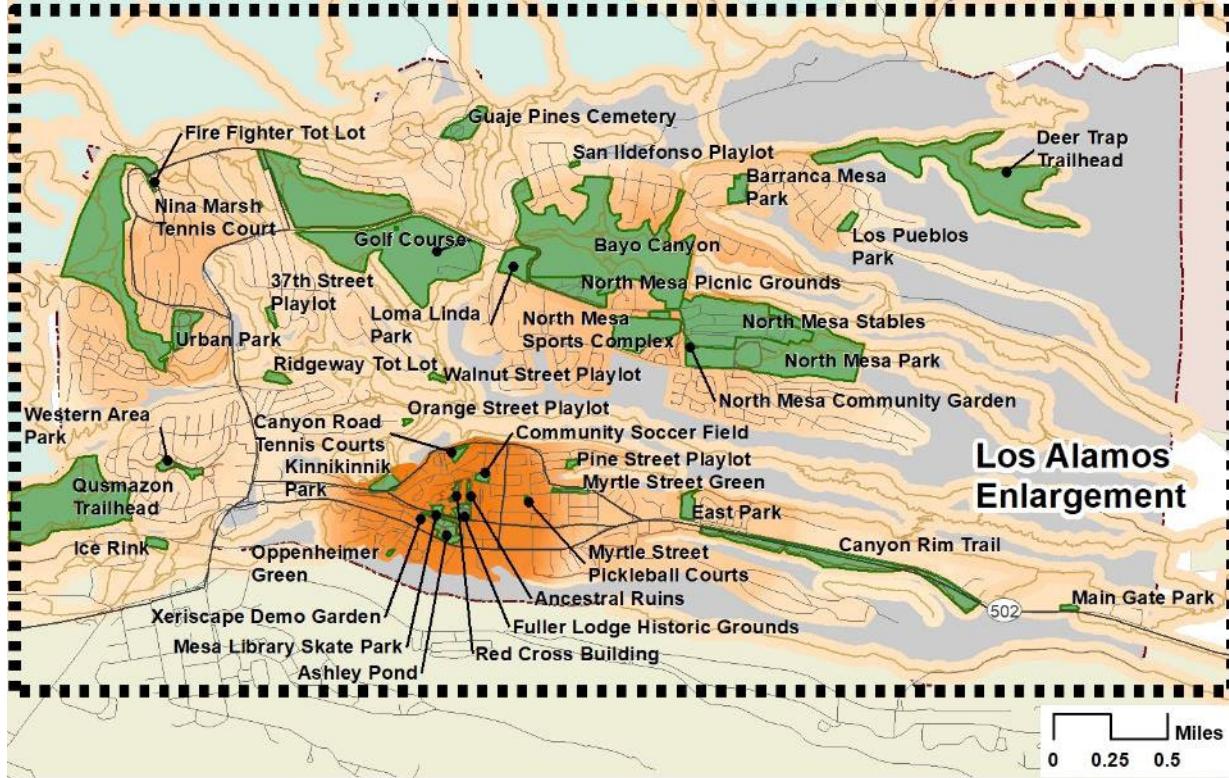
GRASP® Walkability Analysis



White Rock

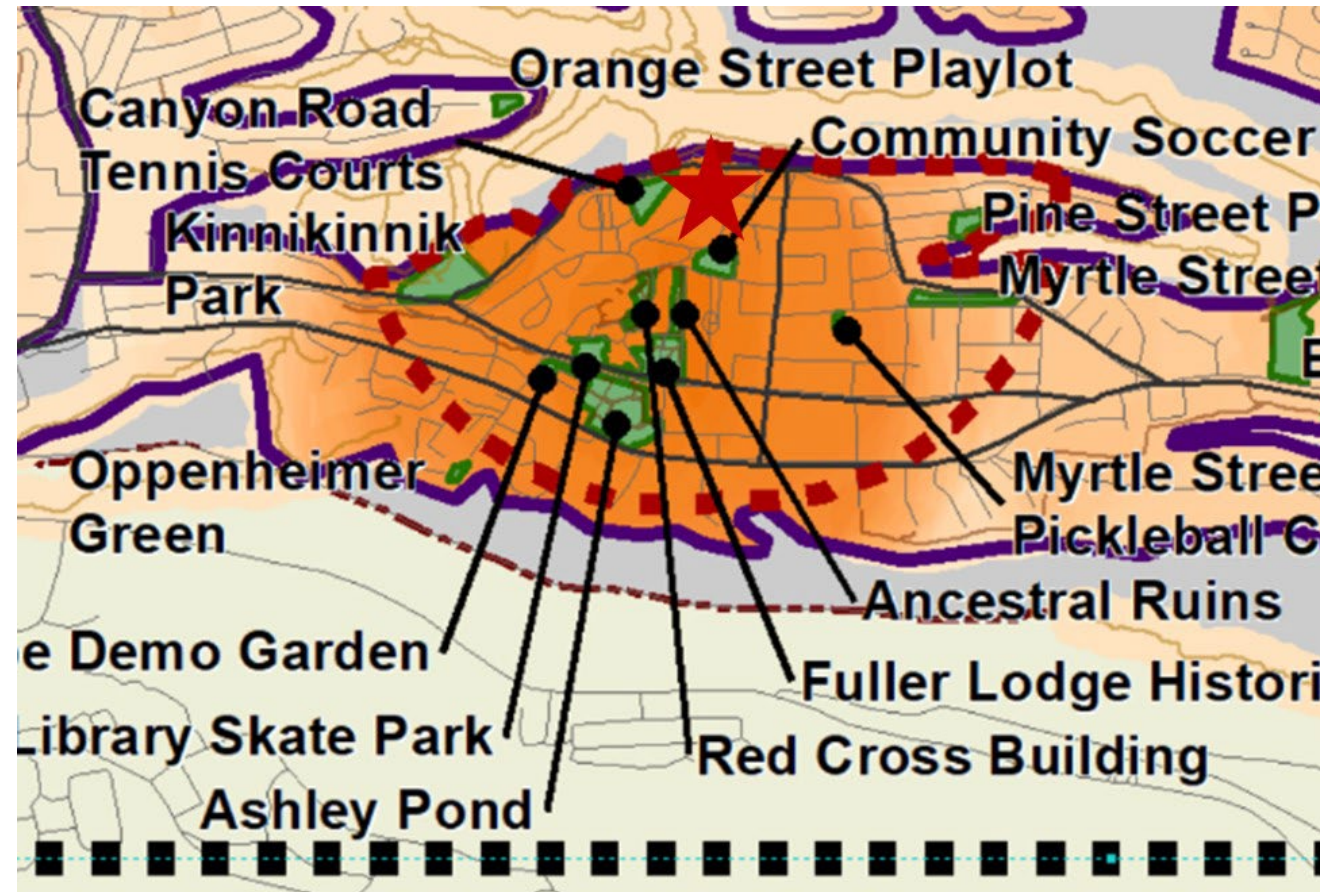


Los Alamos

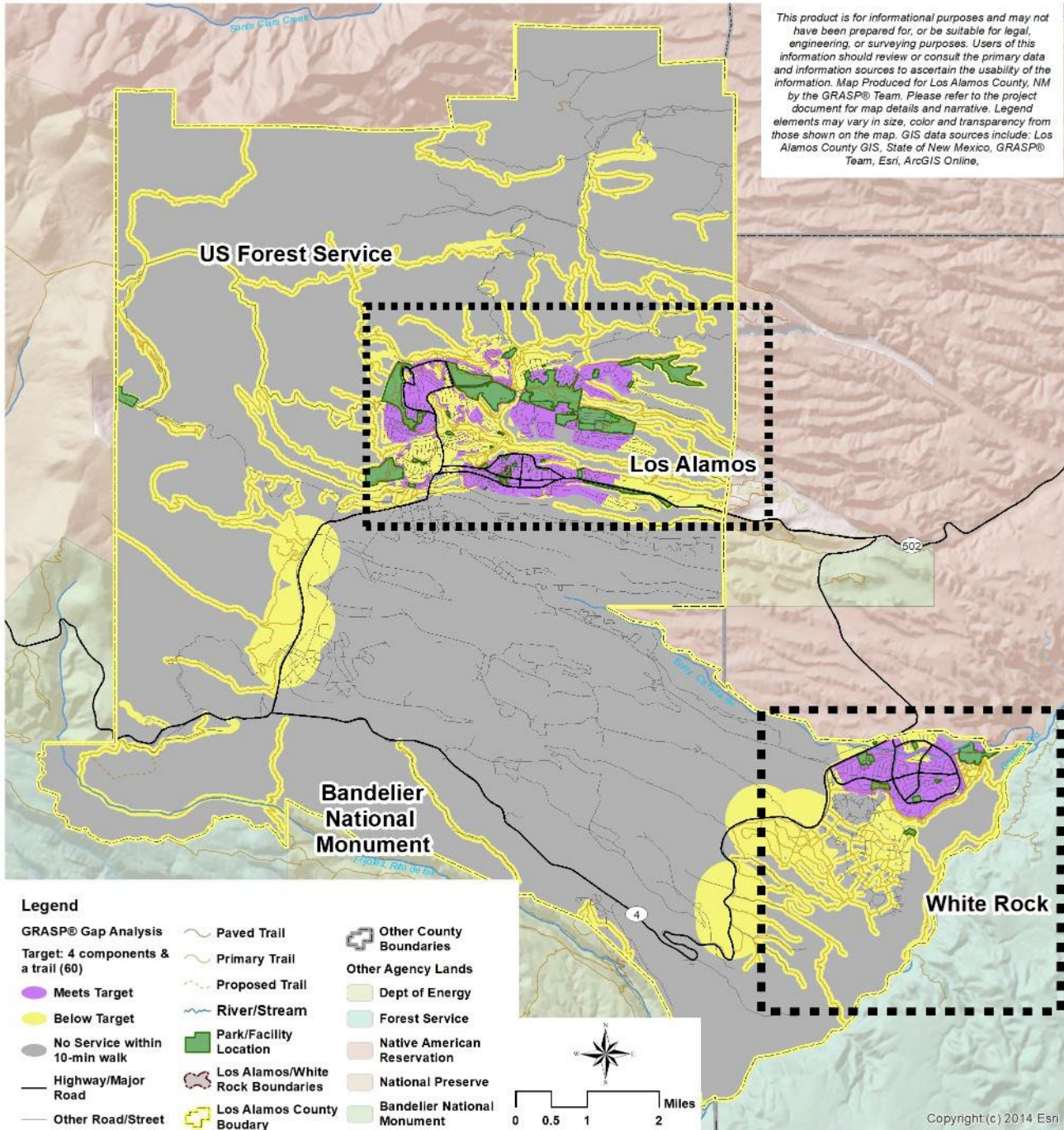


GRASP® Walkable Access

▲ Highest Value Area

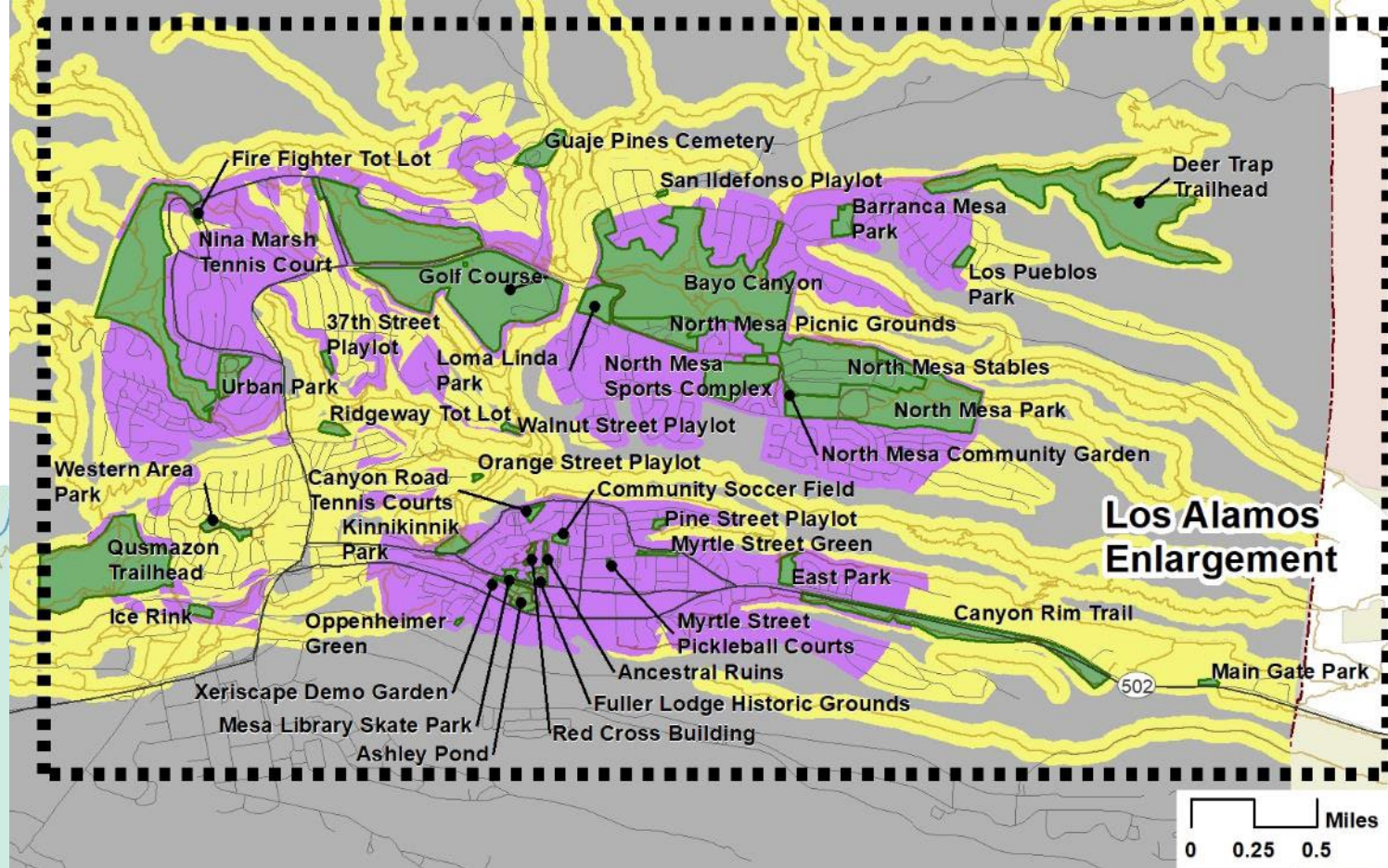
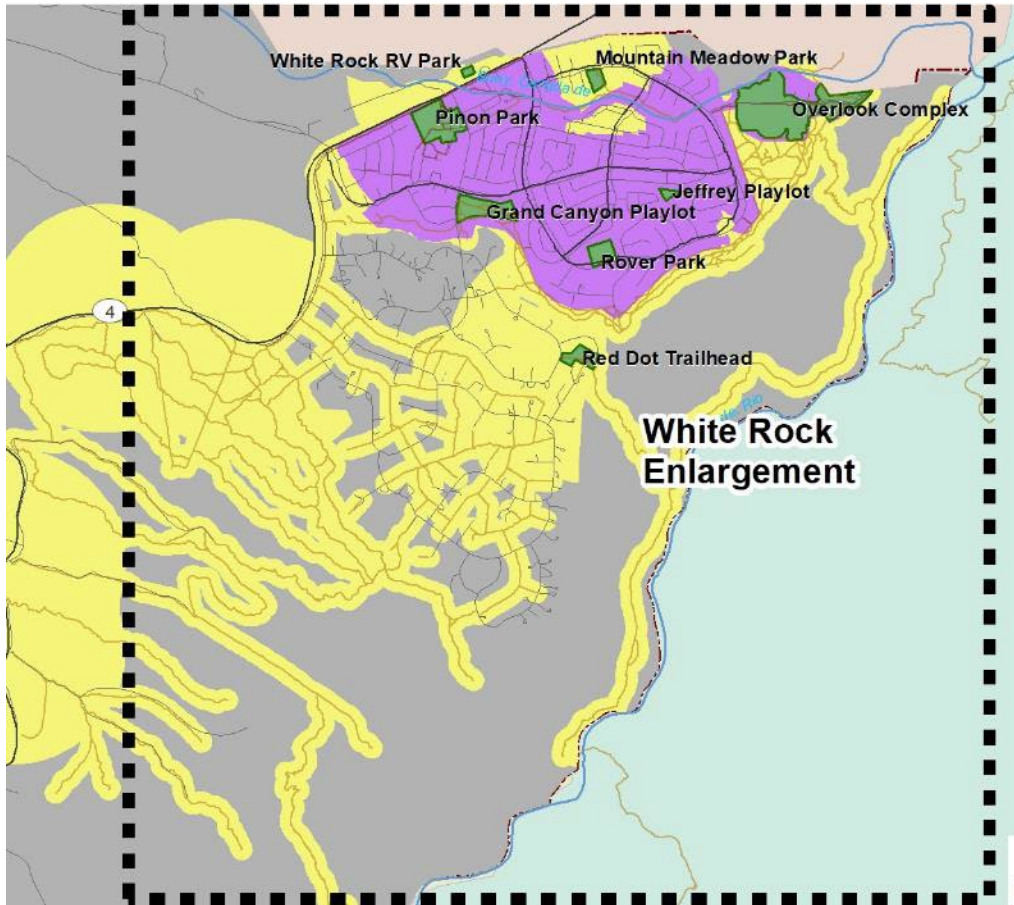


This product is for informational purposes and may not have been prepared for, or be suitable for legal, engineering, or surveying purposes. Users of this information should review or consult the primary data and information sources to ascertain the usability of the information. Map Produced for Los Alamos County, NM by the GRASP® Team. Please refer to the project document for map details and narrative. Legend elements may vary in size, color and transparency from those shown on the map. GIS data sources include: Los Alamos County GIS, State of New Mexico, GRASP® Team, Esri, ArcGIS Online.

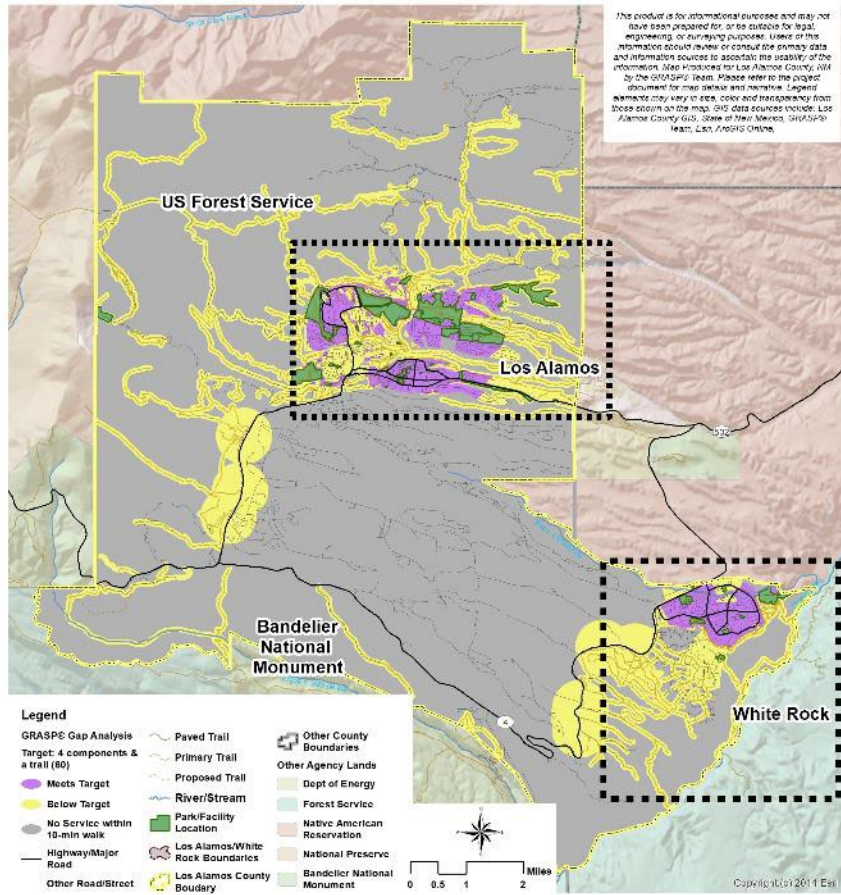


GRASP® Walkable Target

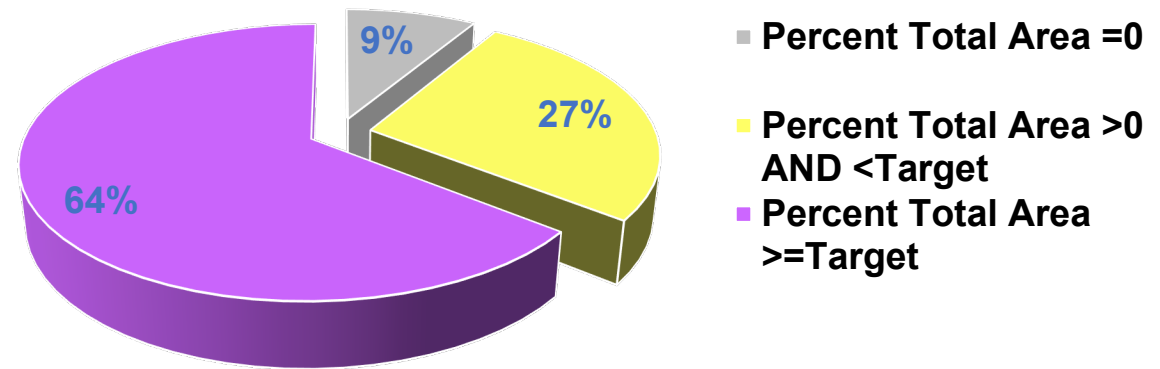
GRASP® Walkable Target



GRASP® Walkable Access

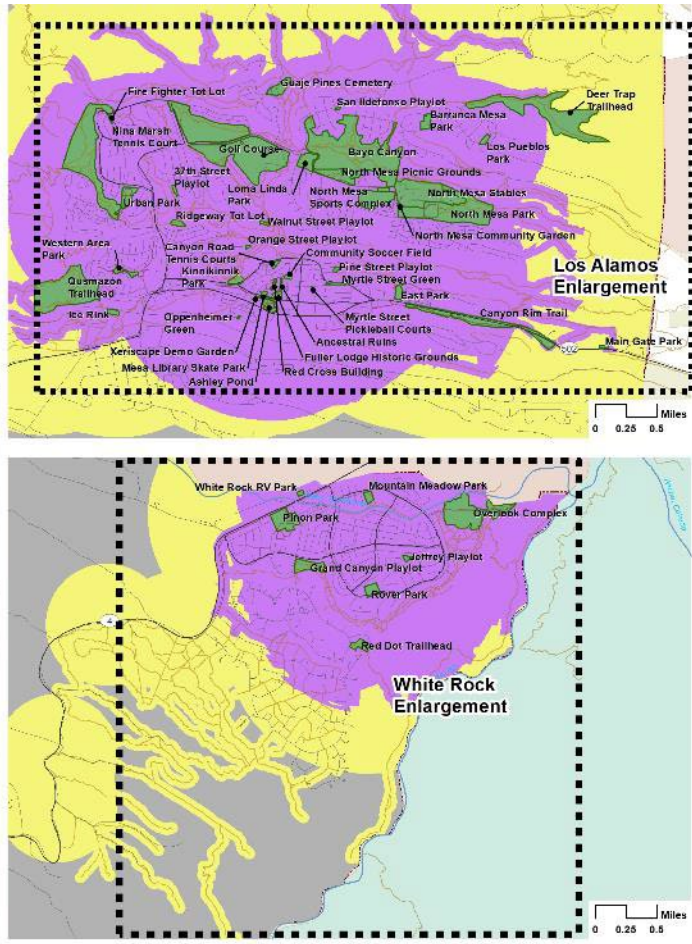
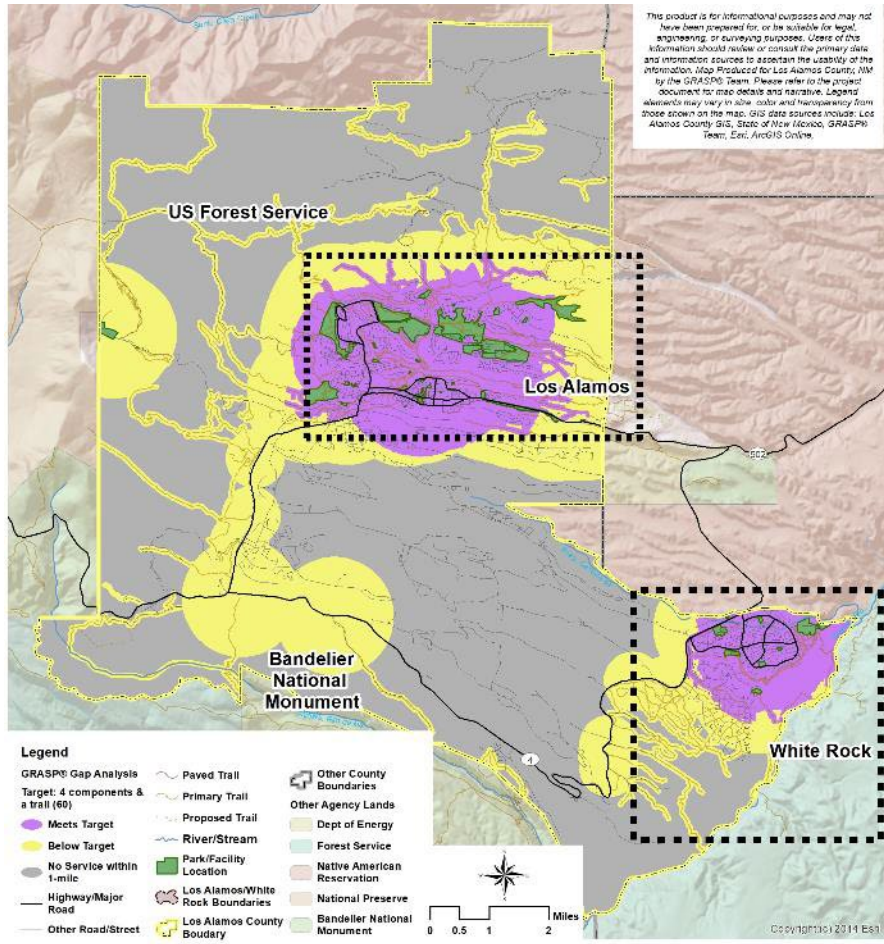


% of Population with Walkable Access to Outdoor Recreation



	2021 Population	% of 2021 by Service Level	2026 Projected Population	% of 2026 Population by Service Level	Median Household Income	Diversity Index	Crime Index
Walkability							
No Service	1,650	9%	1,688	9%	\$ 154,451	54.6	39
Low Service	5,133	27%	5,289	27%	\$ 114,975	57.4	41
Target	12,265	64%	12,605	64%	\$ 124,226	59.9	27

GRASP® Neighborhood Access



% of Population with Neighborhood Access to Outdoor Recreation

