

INTEGRATED COMMUNITY SERVICES MASTER PLAN

FOCUS GROUP INPUT

PAT O'TOOLE, PRINCIPAL, PROJECT MANAGER

TERESA L. PENBROOKE, PHD, CPRE
CEO & PRINCIPAL, HEALTHY COMMUNITIES SPECIALIST



LOS ALAMOS COUNTY MASTER PLANNING PROCESS

4 Stages of Public Engagement



Strategic Kick-Off


- Critical Success Factors
- Key focus areas
- Meeting schedule
- Identification of Key Stakeholders
- Gathering of All Relevant Documents
- Briefing with Decision Makers





1 Information Gathering

- Needs Assessment
 - Staff
 - Stakeholders
 - Public Meetings
 - Focus groups
 - Interviews
 - Surveys
 - Online engagement
 - Inventory
 - All Assets
 - All Program Locations
 - Other Providers
 - Level of Service Analysis
 - GIS component-based mapping
 - Quality, Quantity, Functionality
 - Community Profile
 - Historical & Planning Context
 - Demographics
 - Trends
- 

2 Findings & Visioning

- Presentation/Feedback Sessions
 - Staff
 - Stakeholders
 - Decision Makers
 - What We Have Discovered
 - Key Issues Matrix
 - Key Ideas and Themes for Improvement
 - Analysis
 - Programming
 - Operations
 - Maintenance
 - Marketing & Communications
 - Financial Resources
- 

3 Draft Recommendations

- Summary Findings
 - Strategies
 - Long-Term Vision
 - Short-Term Action
 - Implications
 - Financial
 - Operational
 - Maintenance
 - Recommendations
 - Action Plan
 - Tasks
 - Timing
 - Costs
 - Review & Revisions
- 
- 

4 Final Plan

- Review
 - Staff
 - Public
 - Decision Maker
 - Distribute/Post
- 

Implementation

- Action Plan
 - Annual Review
- 

PROJECTS IN PROGRESS

BMX TRACK RENOVATION- FINAL SELECTION OF VENDOR AND OPTIONS TO BE PRESENTED TO COUNTY COUNCIL

BREWER ARENA- NEW LIGHTS

PUEBLO CANYON CONCEPTUAL TRAIL- PROVIDE A CONCEPTUAL PLAN FOR A LONG FLOW TRAIL, TWO NICA LOOPS, MULTIMODAL TRAIL FROM NORTH MESA TO DOWNTOWN, AND MTB SKILLS PARK. VENDOR SELECTED AND PROCESS STARTED

TENNIS COURT TOURNAMENT SITE- RFP PREPARED TO ADD COURTS FOR A TOURNAMENT QUALITY LOCATION- SITES UNDER REVIEW UNMLA SITE, URBAN PARK, AND NORTH MESA PARK

GYMNASIUM- SHARED SPACE ON LOS ALAMOS PUBLIC SCHOOLS MIDDLE SCHOOL PROPERTY. CURRENT BUDGET \$4-6 MILLION, ADDITIONAL SHARED SPACE GYMNASIUM IN WHITE ROCK AT CHAMIS ELEMENTARY SCHOOL- RFP BEING DEVELOPED FOR MIDDLE SCHOOL, PARTIAL FUNDING FOR STUDY FOR WR SECURED



POTENTIAL OPPORTUNITIES

HOW TO INCORPORATE KEY COMMUNITY HEALTH INFO THROUGHOUT PROGRAMMING

INCORPORATE LIBRARY INTO ALL ASPECTS OF PROGRAMMING AND CREATE POP UPS

ICE RINK COVER FOR EXTENDED SEASON AND ADDITIONAL SEATING, POSSIBLE SHOWERS

CAMPING UPGRADES TO CAMP MAY

ARTIFICIAL TURF ON MULTIPLE ATHLETIC FIELDS

PICKLEBALL COURTS (PROBABLY A RE-PURPOSE)

SPLASH PAD IN LA

ALL ABILITIES PLAYGROUND (RENOVATION OF EXISTING)

EXERCISE STATIONS ALONG TRAILS

SUSTAINABLE ACTIONS

MASTER PLAN N MESA

MASTER PLAN PARCELS IN WHITE ROCK

CRICKET PITCH

COMMUNITY GARDENS

LIGHTED PLAYGROUNDS



Integrating P&R and Health into Community Systems & Planning

- Role of Parks and Recreation in Health and Community Resilience
- Integrated P&R Healthy Community Plans





Integrated
Focus:
Health
Equity and
Community
Resilience

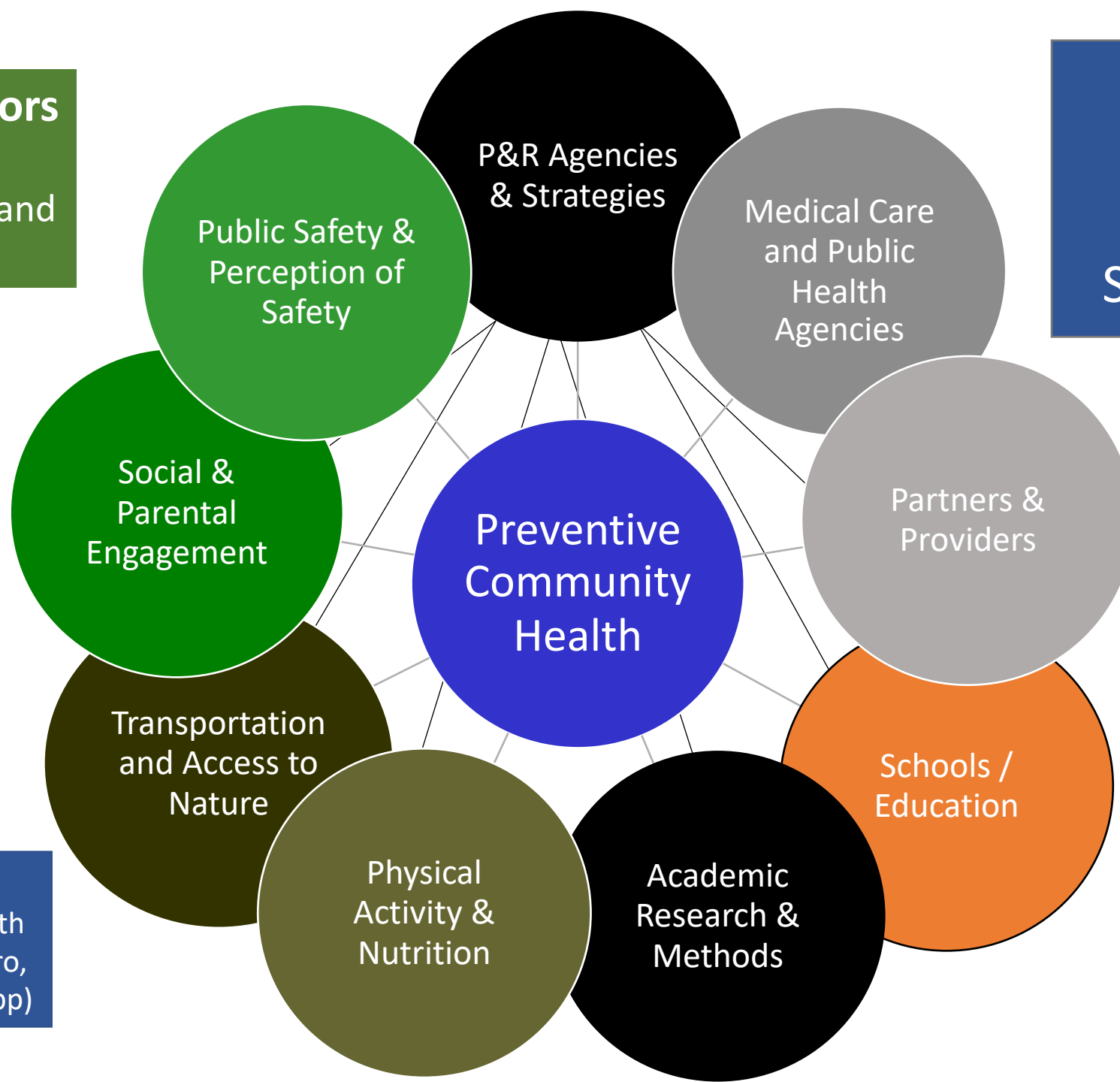
- Everyone has a fair and just opportunity to be as healthy as possible
- Removing obstacles - Poverty, discrimination, and lack of access to jobs, quality education, housing, safe environment, transportation, and health care
- Based on human rights principles
- Quality of Life brings individual and community resilience

Modifiable Factors

(determinants)

Spaces, Programs, and Policies

Modifying Preventive PH through P&R Systems Thinking



Actors

Facilitating Partnerships and outcomes

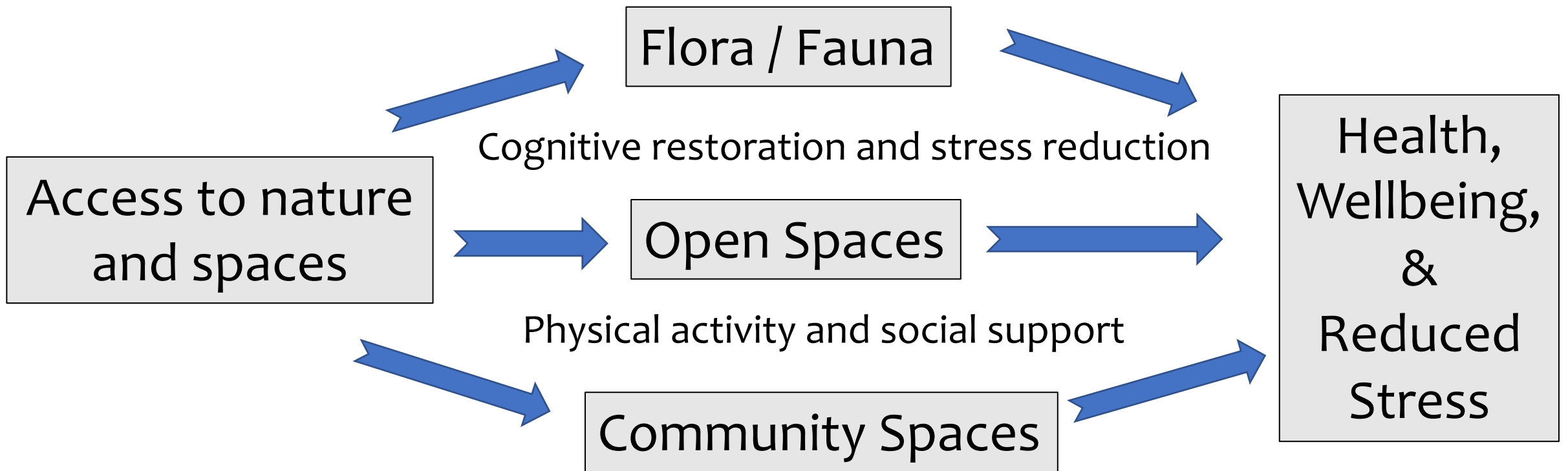
Actions on all levels

(T.L. Penbrooke, 2017, with M.B. Edwards, J.N. Bocarro, K.A. Henderson, & J.A. Hipp)

GPARED

NC STATE UNIVERSITY

Systems approach to relationships between equitable access to nature and public spaces and health



Adapted from EPA, 2014; Kuo, 2015; Saw, Lim, & Carrasco, 2015; Penbrooke, 2017; Sturm & Cohen, 2014

Why Parks and
Recreation
as an
Integrated
Preventive Health
Solution?

- Provide access to land and facilities
- Facilitate opportunities to participate in active and passive recreation and conservation
- Provide crucial health and wellness opportunities for all populations across the County
- Offering affordable programming and managed access to outdoor spaces can lead to a more active and healthier residents, positive economic impacts, and community resilience.

Five Elements for Healthy Systems Analysis

Warrant for Action

- Why? Who?
- Impact & Negative Markers

Community Systems

- Convene Stakeholders & Actors
- Intersections

Inventory of Assets & Affordances

- Facilities & Lands
- Programs & Services
- Connectivity & Equitable Access

Policies, Laws & Procedures

- Laws & Ordinances
- Agency Regulations
- Agency Policies & Practices

Fiscal Resources & Strategies

- Funding Paths & Allocation Patterns
- Sources and Use of \$\$
- ROI


What are we doing?

Is it working?

How can we improve?


APPLIED TO THE LOS ALAMOS COUNTY MASTER PLANNING PROCESS

4 Stages of Public Engagement



Strategic Kick-Off

- **Critical Success Factors**
- Key focus areas
- Meeting schedule
- Identification of Key Stakeholders
- Gathering of All Relevant Documents
- Briefing with Decision Makers



1 Information Gathering

• Needs Assessment

- Staff
- Stakeholders
- Public Meetings
- Focus groups
- Interviews
- Surveys
- Online engagement



• Inventory

- All Assets
- All Program Locations
- Other Providers

• Level of Service Analysis

- GIS component-based mapping
- Quality, Quantity, Functionality

• Community Profile

- Historical & Planning Context
- Demographics

• Trends

2 Findings & Visioning

• Presentation/Feedback Sessions

- Staff
- Stakeholders
- Decision Makers
- What We Have Discovered
- Key Issues Matrix
- Key Ideas and Themes for Improvement

• Analysis

- Programming
- Operations
- Maintenance
- Marketing & Communications
- Financial Resources



3 Draft Recommendations

- Summary Findings
- Strategies
 - Long-Term Vision
 - Short-Term Action



- Implications
 - Financial
 - Operational
 - Maintenance

• Recommendations

• Action Plan

- Tasks
- Timing
- Costs



• Review & Revisions



4 Final Plan

- Review
 - Staff
 - Public
 - Decision Maker
- Distribute/Post



Implementation

- Action Plan
- Annual Review



YOUR INPUT TODAY

- What are the current strengths around this integrated approach? What is currently working well?
- What are the challenges or weaknesses that need to be addressed now?
- What other opportunities do you see to consider?
- Who are the partners to help make it happen? Who else should we be talking to?

NEXT STEPS

COMPLETE FOCUS GROUPS AND STAKEHOLDER INTERVIEWS – JAN
OPEN PUBLIC INPUT WEBINAR – FEB
STATISTICALLY-VALID AND ONLINE SURVEYS – FEB/MARCH
INVENTORY ASSESSMENT – FEB
VIRTUAL FINDINGS PRESENTATIONS - APRIL

THANK YOU FOR YOUR
INVOLVEMENT!

LOS ALAMOS
Community Services

PAT O'TOOLE, PRINCIPAL, PROJECT MANAGER

PATO@GREENPLAYLLC.COM

303-345-1804



TERESA L. PENBROOKE, PHD, CPRE

TERESAP@GREENPLAYLLC.COM



www.greenplayllc.com



www.gpred.org

