

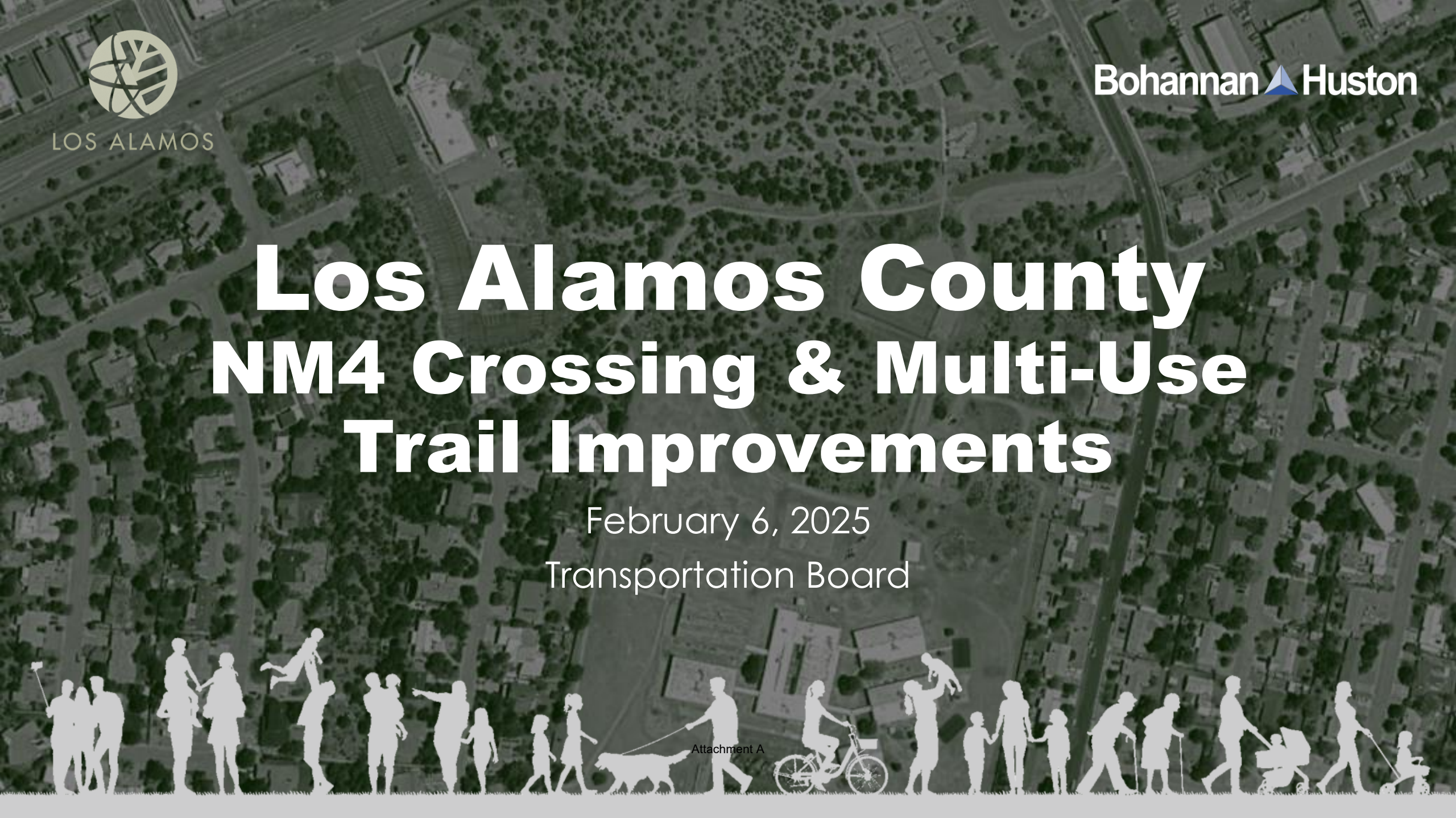

  
 LOS ALAMOS

Bohannon  Huston

# Los Alamos County NM4 Crossing & Multi-Use Trail Improvements

February 6, 2025  
 Transportation Board

Attachment A

An aerial photograph of a suburban neighborhood, showing a grid of streets, numerous houses with green roofs, and scattered trees. The image is in grayscale, with a dark overlay. In the top left corner, there is a circular logo for Los Alamos. In the top right corner, the text 'Bohannon & Huston' is displayed with a small blue triangle icon. The main title 'Los Alamos County NM4 Crossing & Multi-Use Trail Improvements' is centered in large, bold, white text. Below the title, the date 'February 6, 2025' and the text 'Transportation Board' are displayed in a smaller white font. At the bottom of the slide, there is a white silhouette of a diverse group of people walking and using a multi-use trail, including a person with a dog, a person on a bicycle, a person with a stroller, and a person with a cane. The text 'Attachment A' is written in small white font near the center of the bottom silhouette.

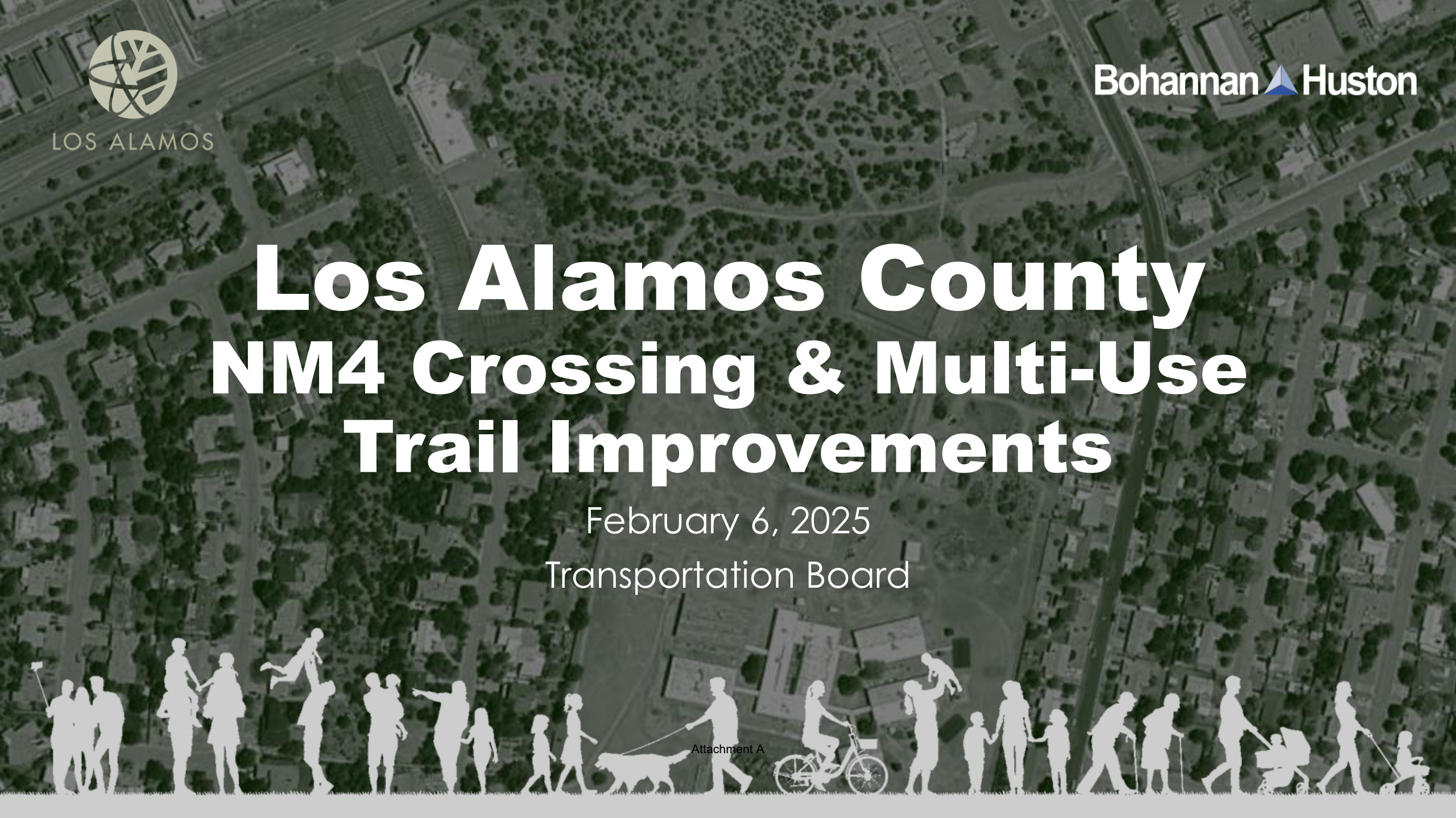
LOS ALAMOS


Bohannon & Huston


# Los Alamos County NM4 Crossing & Multi-Use Trail Improvements

February 6, 2025  
Transportation Board

Attachment A

An aerial photograph of a suburban neighborhood, showing a grid of streets, numerous houses with green roofs, and scattered trees. The image is in grayscale, serving as a background for the presentation slides.

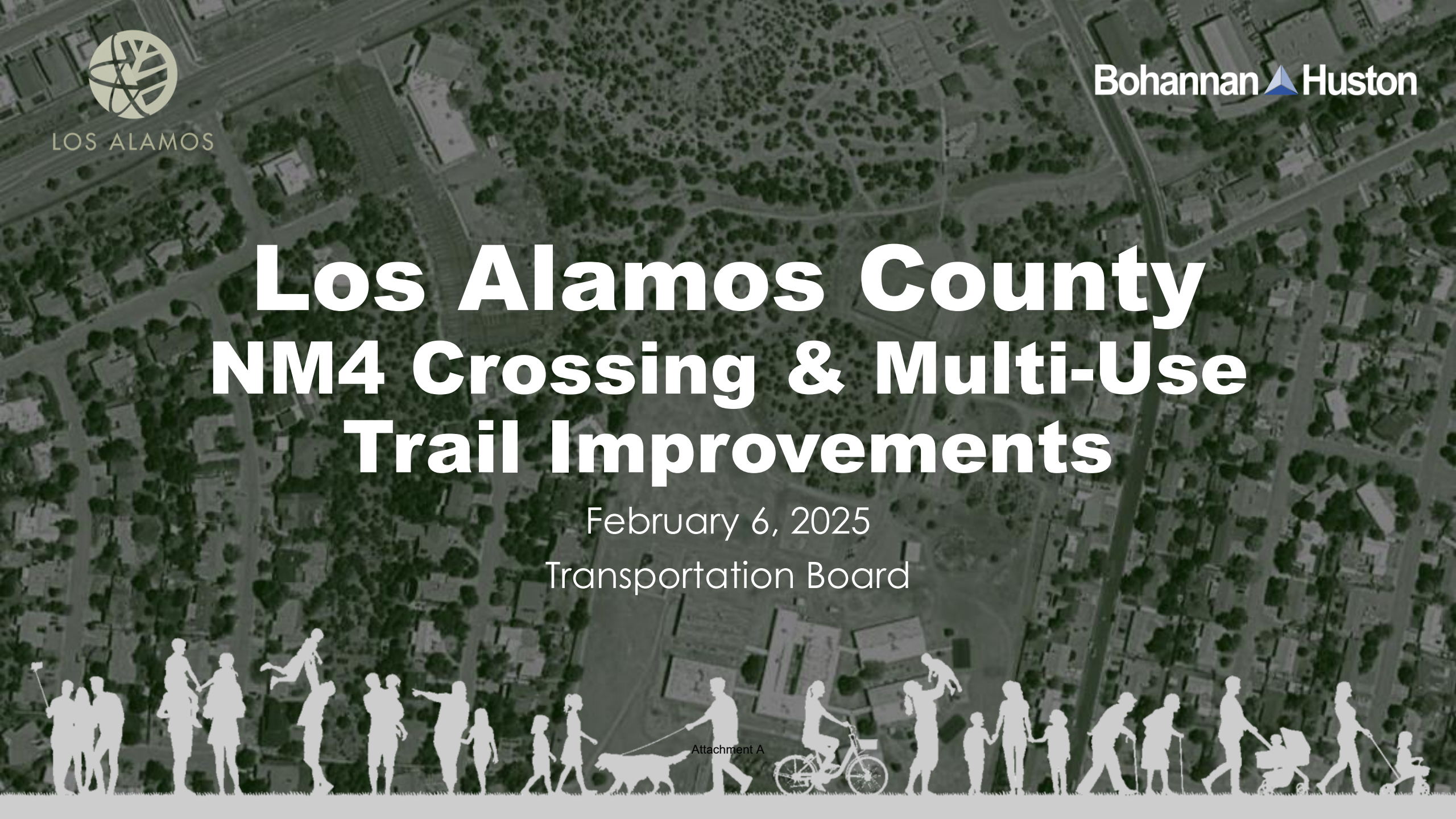
  
LOS ALAMOS

Bohannon  Huston

# Los Alamos County NM4 Crossing & Multi-Use Trail Improvements

February 6, 2025  
Transportation Board

Attachment A

A row of white silhouettes on a black background depicting various people engaged in different activities. From left to right, the silhouettes show: a group of three people walking, a person running, a person pushing a stroller, a person walking a dog, a person riding a bicycle, a person carrying a child on their shoulders, a person walking with a cane, and a person pushing a stroller with a child inside.

# INTRODUCTIONS



LOS ALAMOS

**Keith Wilson**

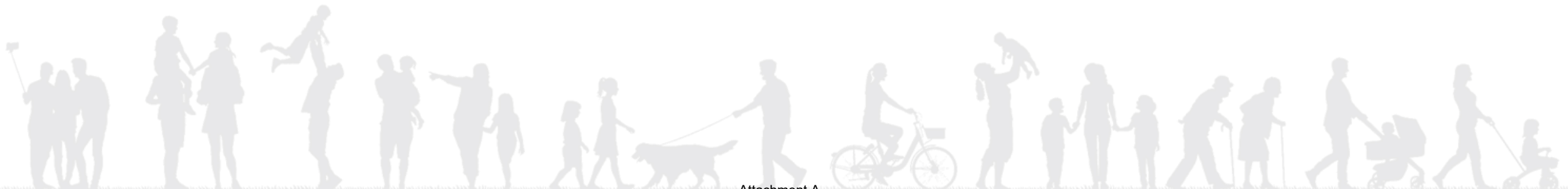
Project Manager

*Public Works Department*

**Bohannon**  **Huston**

**Jared Lee**

Engineering Principal



Attachment A



LOS ALAMOS

**Los Alamos County**  
**NM4 Crossing & Multi-Use Trail Improvements**

**Bohannon**  **Huston**



# PROJECT UPDATE





# VICINITY MAP

## Within the Project Area:

- NM4
- Piñon Park
- Piñon Elementary School



Attachment A





LOS ALAMOS

Bohannon  Huston

# AGENDA

- HAWK Crossing Location Re-evaluation
- NM4 Westbound Lane Reduction Re-evaluation
- NM4 Northside Trail Location Re-evaluation
- Piñon Elementary School Trail Update
- Schedule
- Questions/Feedback





PEDESTRIAN HYBRID BEACON (HAWK) CROSSING LOCATION RE-EVALUATION

HAWK SIGNALS



Source: The Land

PEDESTRIANS

SEE THIS

DO THIS

PUSH THE BUTTON

DRIVERS

SEE THIS

DO THIS

DRIVE

Always look for people who plan to cross.

STOP & WAIT

for the WALK signal.

PREPARE TO STOP

START CROSSING

Always watch for cars.

STOP

for pedestrian.  
(As with any signal RED means STOP)

FINISH CROSSING

STOP FIRST

Proceed with caution if no people are present.

Source: City of Phoenix, AZ

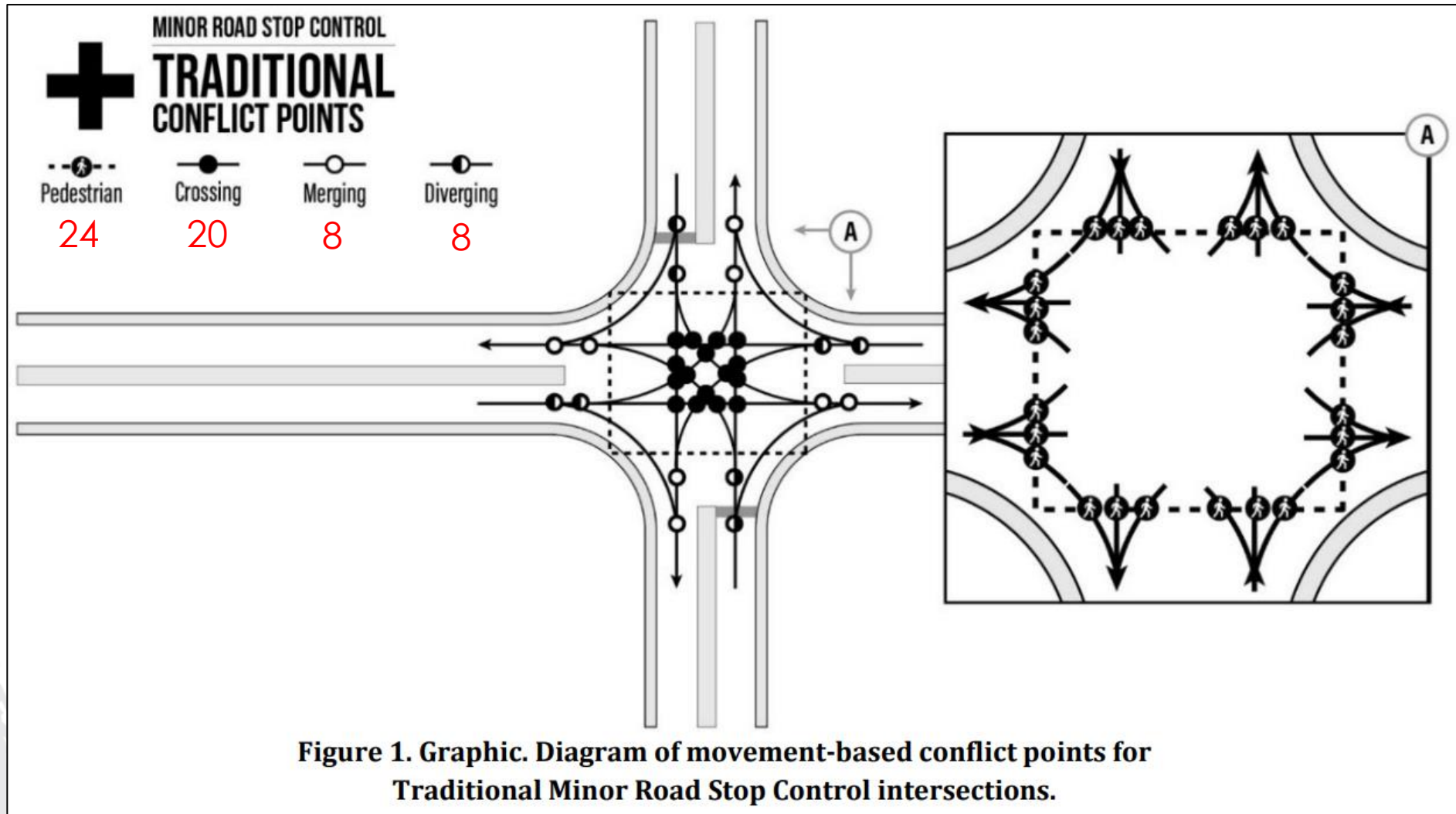


# PEDESTRIAN HYBRID BEACON (HAWK) CROSSING LOCATION RE-EVALUATION





# PEDESTRIAN HYBRID BEACON (HAWK) CROSSING LOCATION RE-EVALUATION NM4/La Vista Dr Intersection

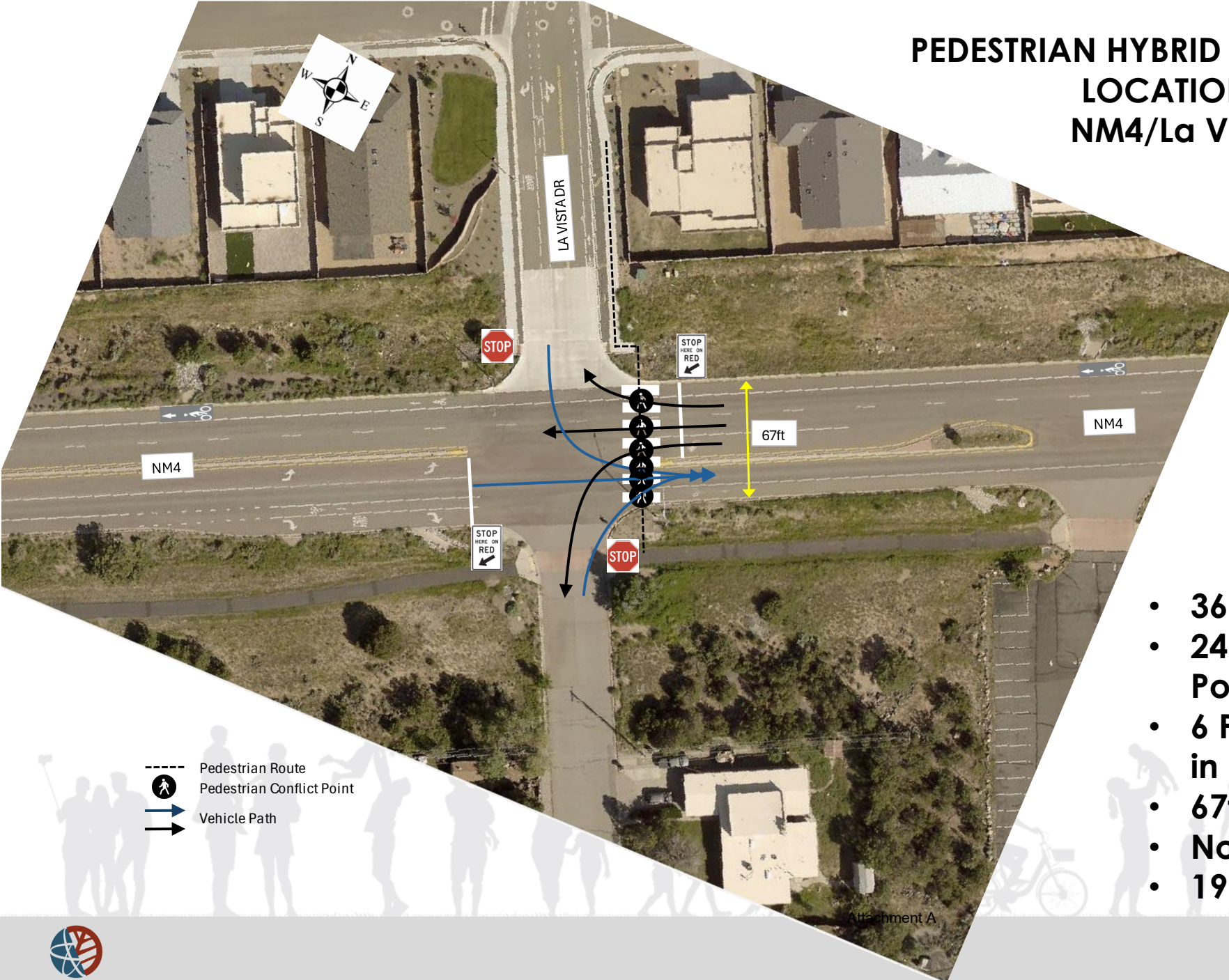


**Figure 1. Graphic. Diagram of movement-based conflict points for  
Traditional Minor Road Stop Control intersections.**

Source: FHWA Publication No.: FHWA-SA-21-013 A Safe System-Based Framework and Analytical Methodology for Assessing Intersections  
Attachment A



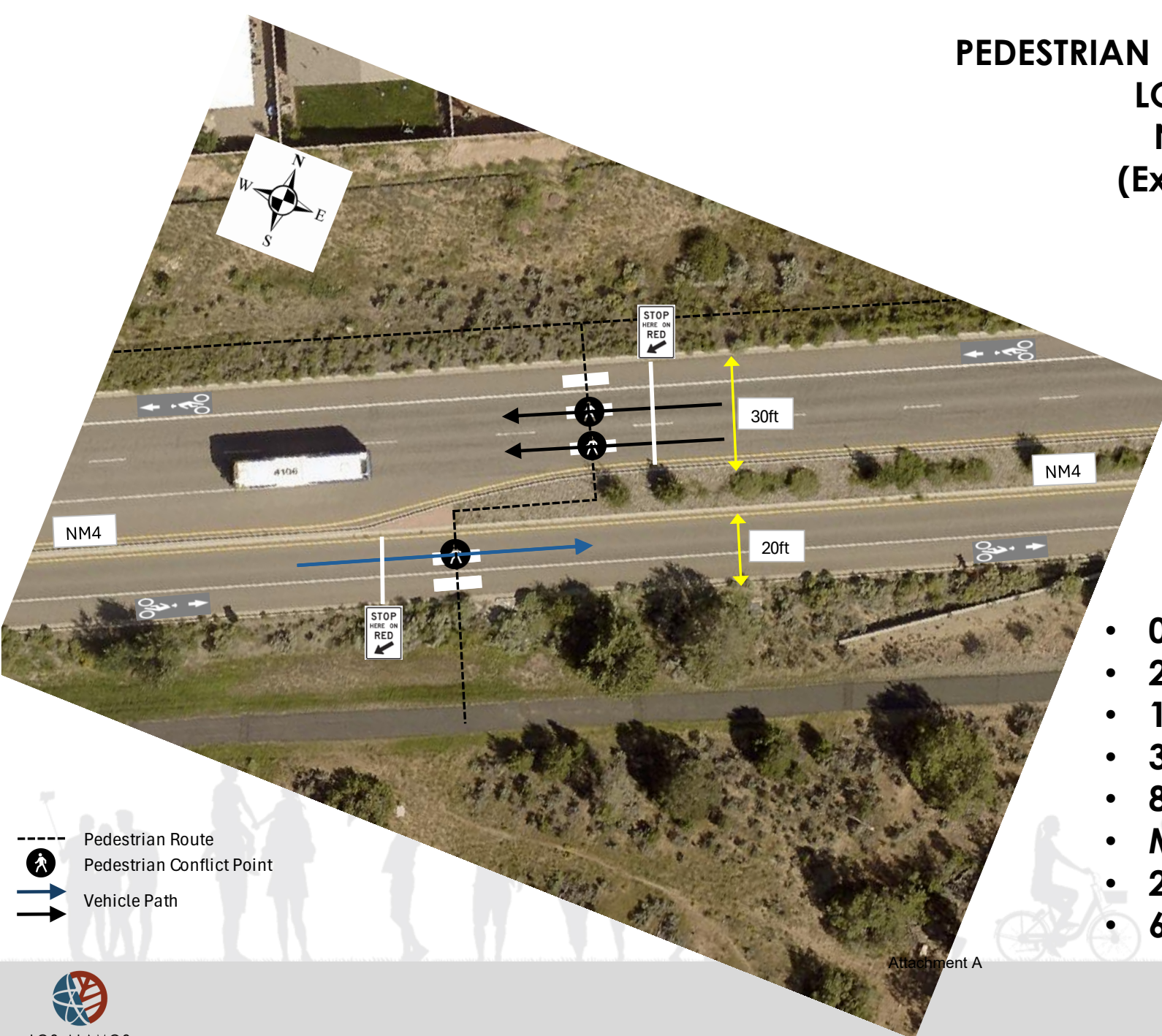
# PEDESTRIAN HYBRID BEACON (HAWK) CROSSING LOCATION RE-EVALUATION NM4/La Vista Dr Intersection



- 36 Vehicle/Vehicle Conflict Points
- 24 Pedestrian/Vehicle Conflict Points
- 6 Pedestrian/Vehicle Conflict Points in HAWK Crossing
- 67ft Crossing Distance
- No Median Refuge
- 19 Second Exposure @ 3.5ft per sec



# PEDESTRIAN HYBRID BEACON (HAWK) CROSSING LOCATION RE-EVALUATION NM4 Mid-Block Location (Existing Road Cross Section)

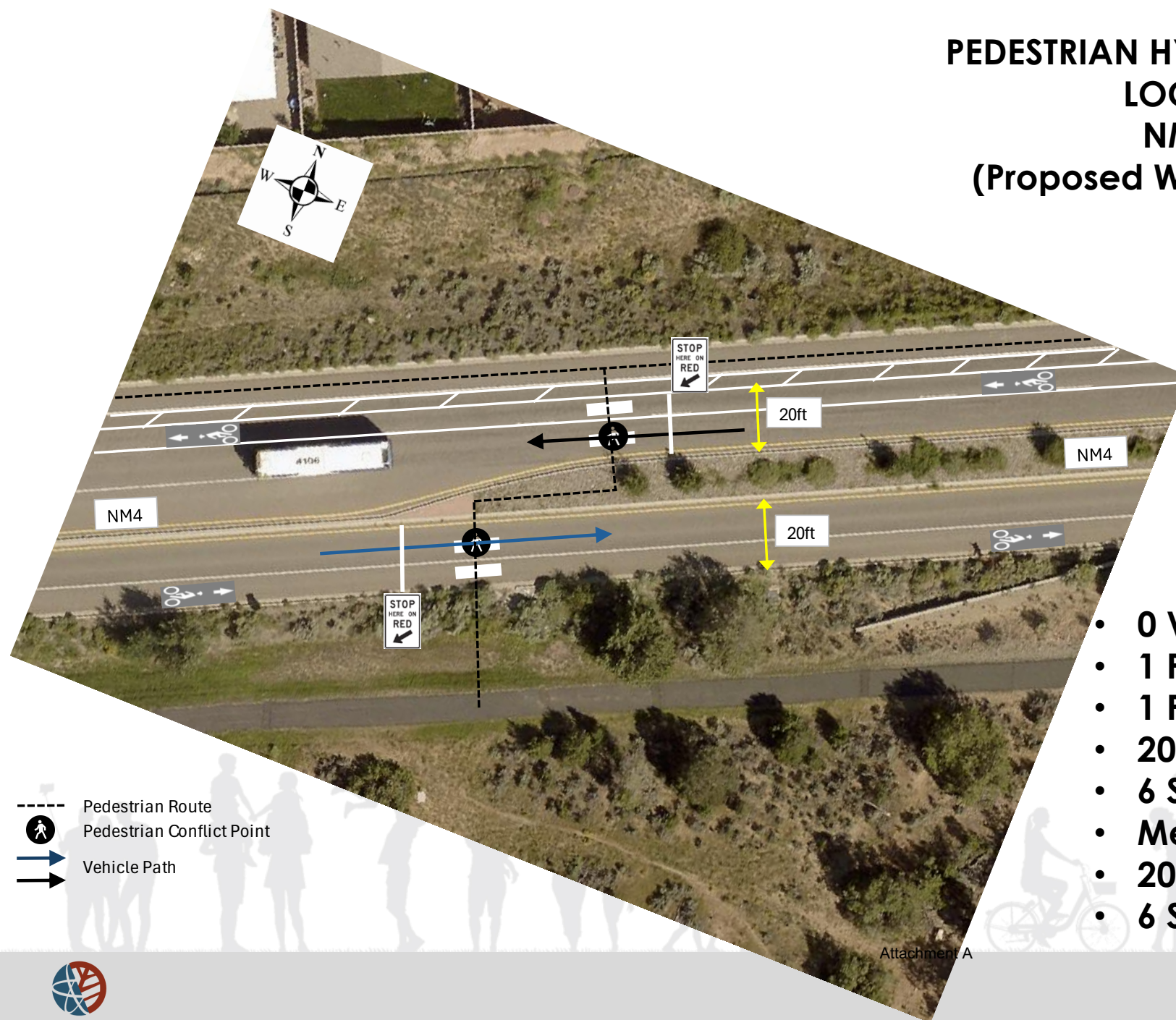


- 0 Vehicle/Vehicle Conflict points
- 2 Pedestrian/Vehicle Conflict Points (WB)
- 1 Pedestrian/Vehicle Conflict Points (EB)
- 30ft Crossing Distance (WB)
- 8.5 Second Exposure @ 3.5ft per sec (WB)
- Median Refuge
- 20ft Crossing Distance (EB)
- 6 Second Exposure @ 3.5ft per sec (EB)

Attachment A



# PEDESTRIAN HYBRID BEACON (HAWK) CROSSING LOCATION RE-EVALUATION NM4 Mid-Block Location (Proposed WB Lane Reduction Cross Section)

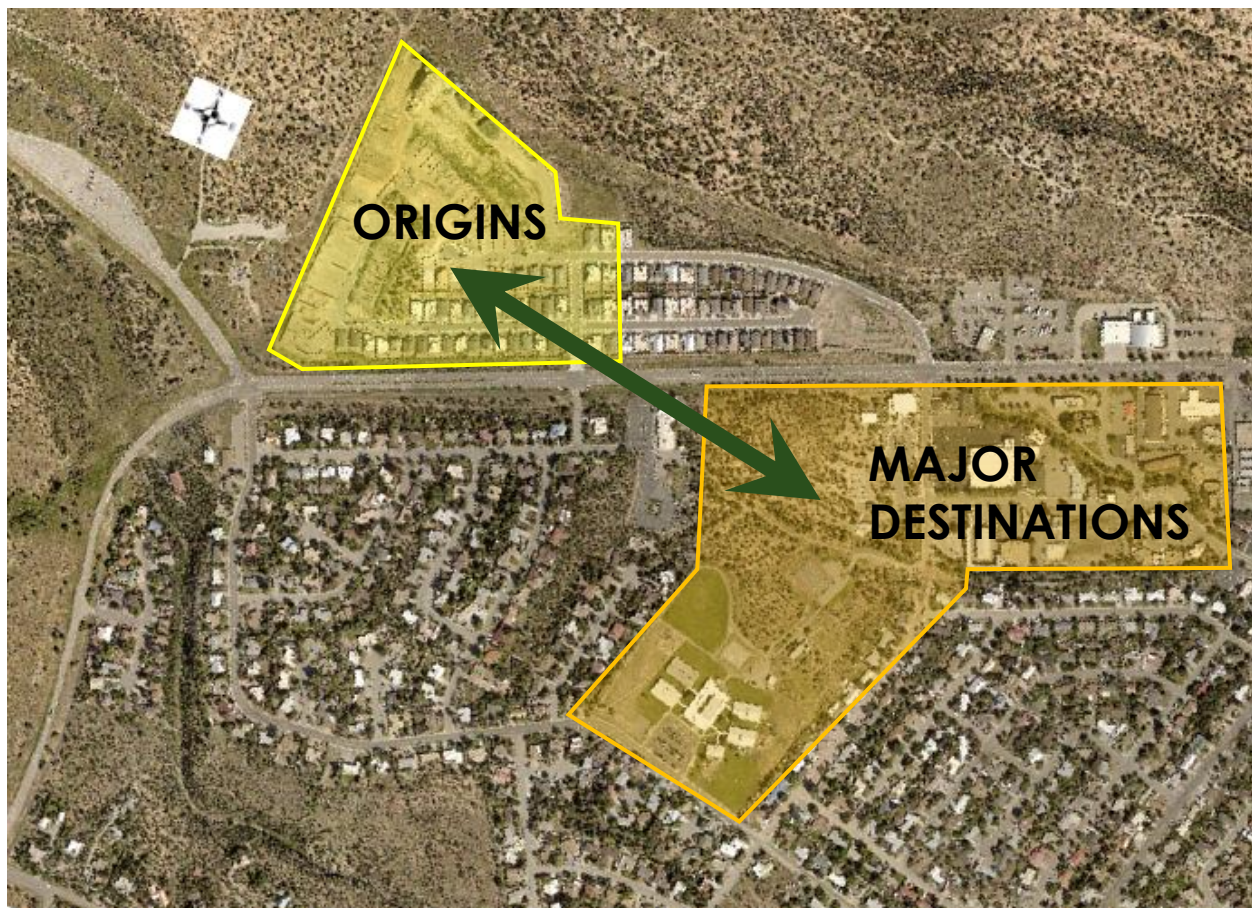


- 0 Vehicle/Vehicle Conflict points
- 1 Pedestrian/Vehicle Conflict Points (WB)
- 1 Pedestrian/Vehicle Conflict Points (EB)
- 20ft Crossing Distance (WB)
- 6 Second Exposure @ 3.5ft per sec (WB)
- Median Refuge
- 20ft Crossing Distance (EB)
- 6 Second Exposure @ 3.5ft per sec (EB)

Attachment A



# PEDESTRIAN HYBRID BEACON (HAWK) CROSSING LOCATION RE-EVALUATION SUMMARY



## NM4/La Vista Intersection

### Pros

- Convenient Route for All Destinations

### Cons

- Increased Pedestrian Exposure
- Complex Decision Making for all Users
- Less Safe
- Longer Delays

## Mid-Block Crossing

### Pros

- Minimal Pedestrian Exposure
- Simplified Decision Making for all Users
- Safer
- Shorter Delays
- Convenient Route for Major Destinations

### Cons

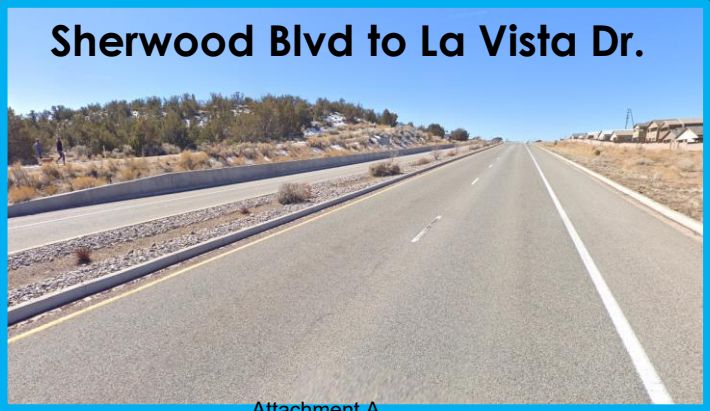
- Less Convenient Route for Some Destinations

**RECOMMEND Mid-Block Crossing**

Attachment A



# NM4 WESTBOUND LANE REDUCTION RE-EVALUATION



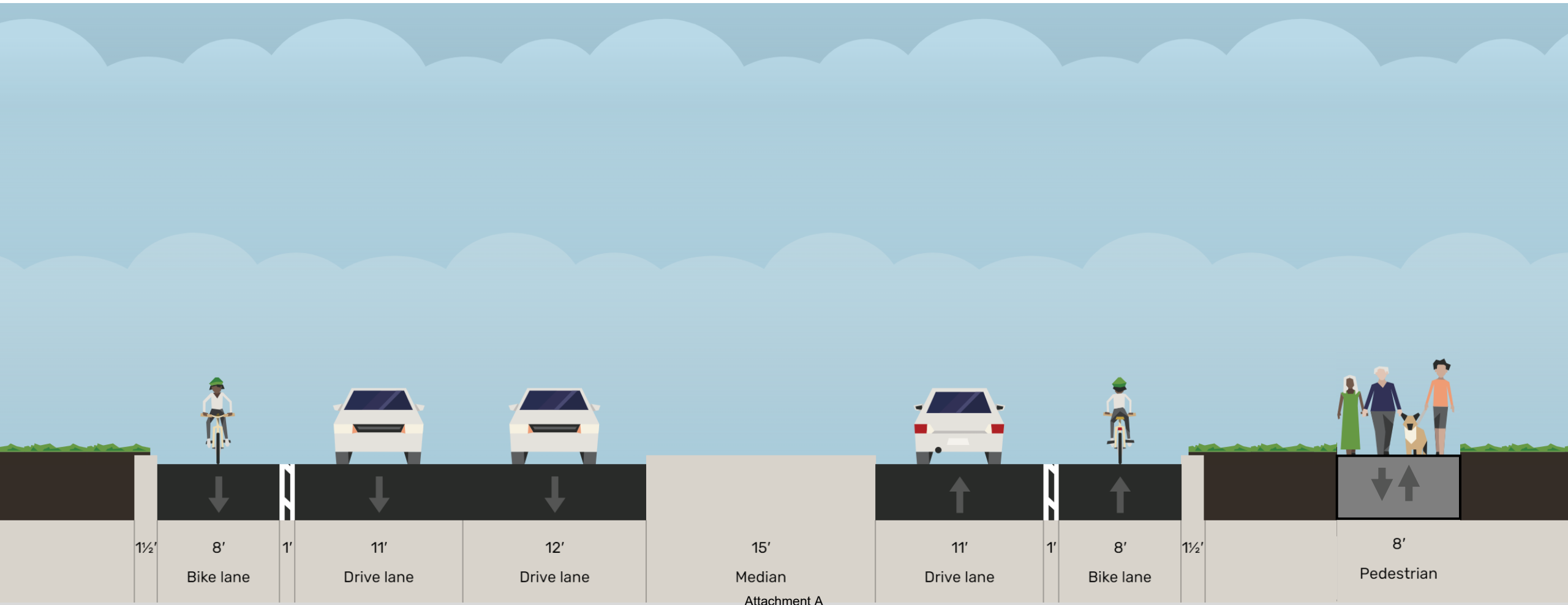
Attachment A



## NM4 WESTBOUND LANE REDUCTION RE-EVALUATION

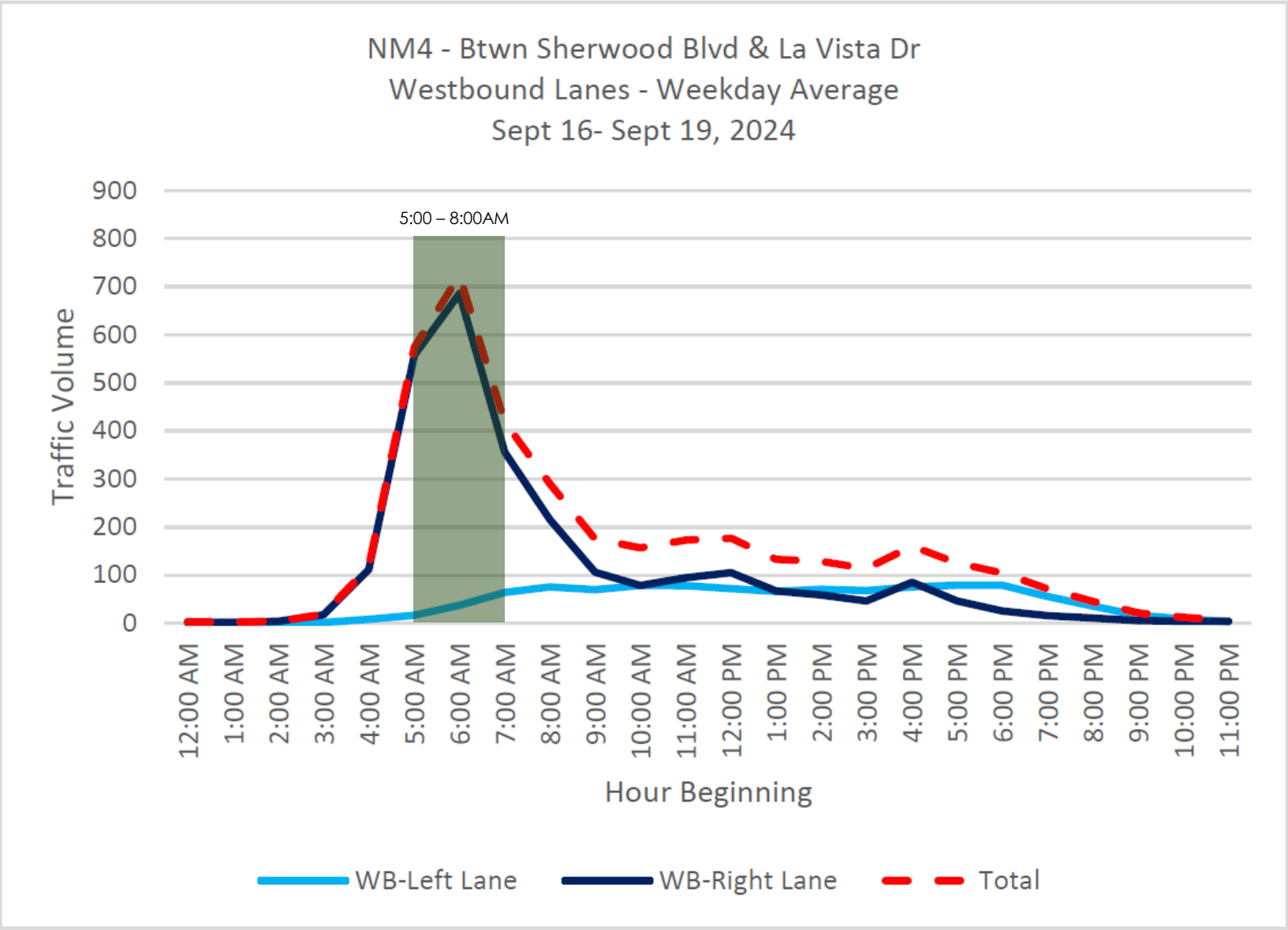
# Existing Cross-Section

Sherwood Blvd to La Vista Dr





# NM4 WESTBOUND LANE REDUCTION RE-EVALUATION



Attachment A



# NM4 WESTBOUND LANE REDUCTION RE-EVALUATION



**NM4 Westbound Approaching La Vista Dr.**

Attachment A



# NM4 WESTBOUND LANE REDUCTION RE-EVALUATION



NM4 Westbound Approaching La Vista Dr.

Attachment A



# NORTHSIDE TRAIL LOCATION RE-EVALUATION

## New Trail in Buffer Area



- Alignment could not be placed at the back of curb due to requiring significant drainage work.
- Corridor with minimal utility conflicts available.
- Require cut in some areas and fill in others to meet ADA slope requirements and connection to mid-block crossing.
- Basalt Rock is near surface in some areas.
- Estimated cost approximately 5 Times more than the cost to place the trail in NM4 Roadway

Attachment A



# NM4 WESTBOUND LANE REDUCTION RE-EVALUATION NORTHSIDE TRAIL LOCATION REVALUATION SUMMARY

## NM4 Westbound Lane Reduction

### Pros

- Allows Trail to Utilize Roadway reducing construction costs
- Help Moderate Speeds to 35 MPH Speed Limit
- Improved safety at mid-block crossing
- Could be reestablished in the future if capacity is needed

### Cons

- Potential delays from slow moving trucks

## Northside Trail in Buffer Area

### Pros

- Trail Buffered from NM4

### Cons

- 5 Times more Cost
- Some Construction Unknowns (Basalt)

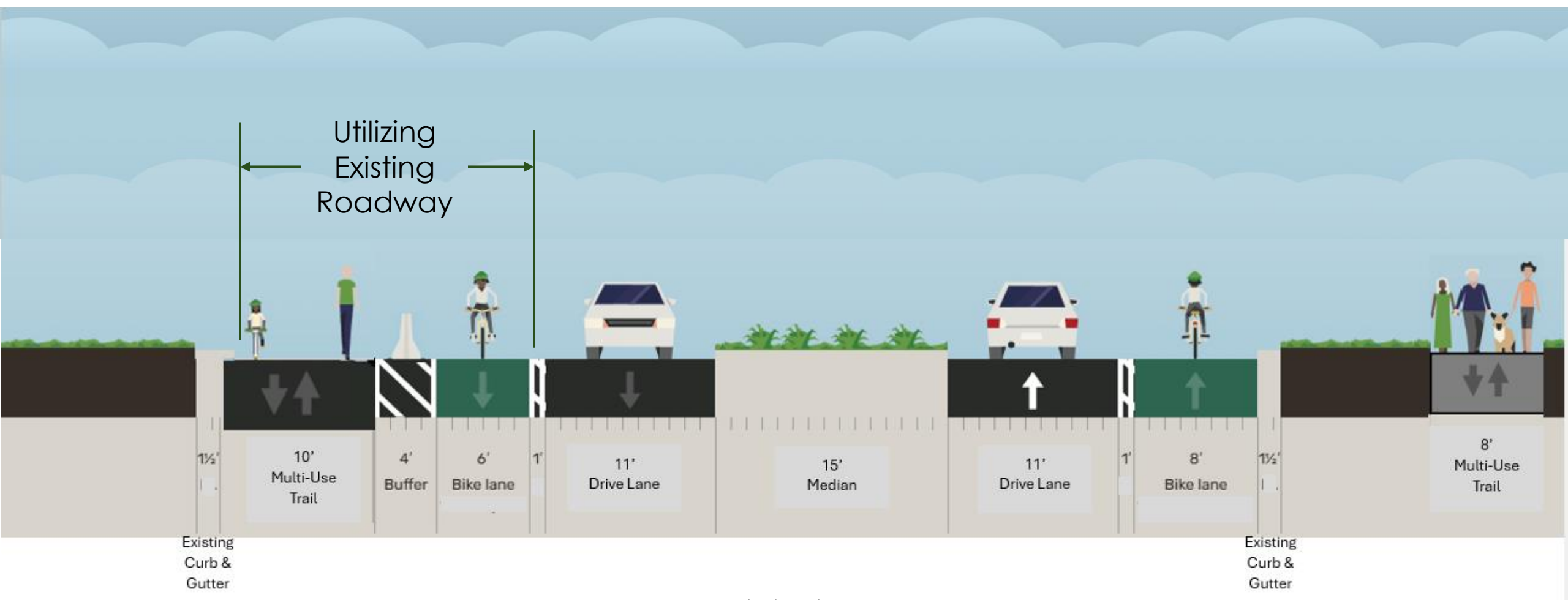


**RECOMMEND WB Lane Reduction and Trail Placement on NM4**

Attachment A



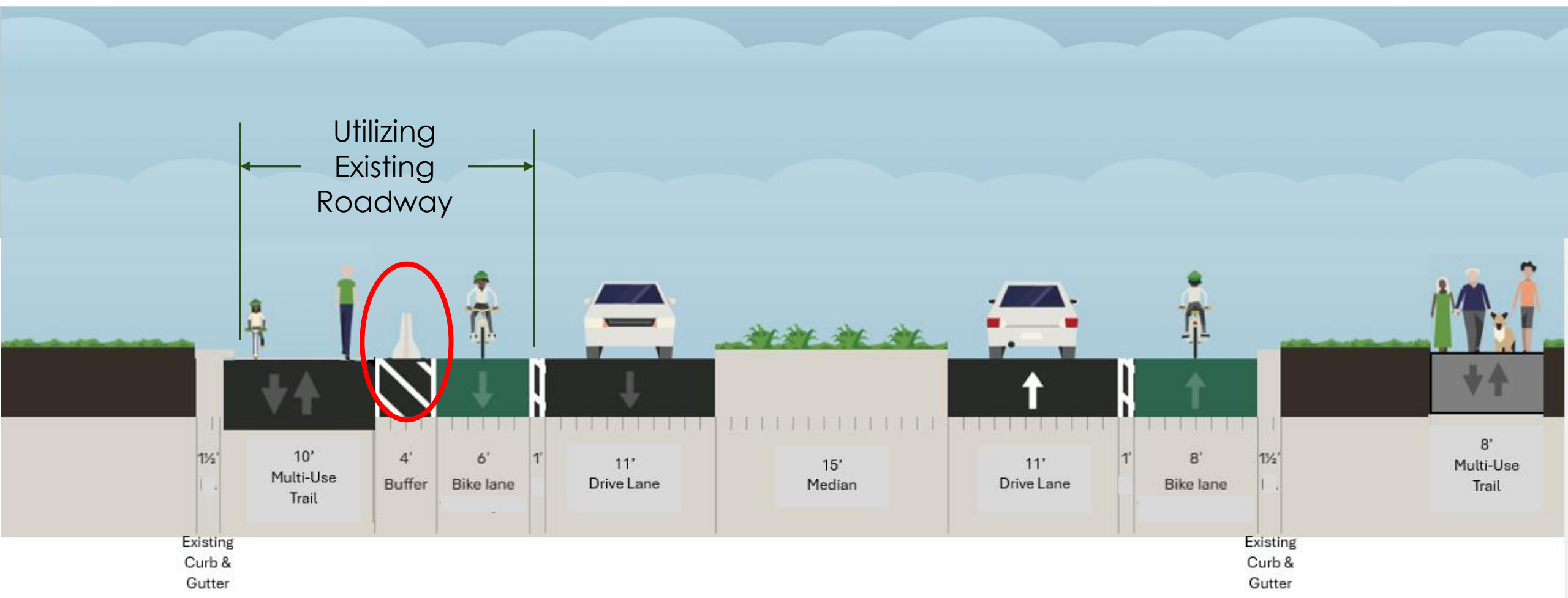
# NM4 PROPOSED CROSS SECTIONS



Attachment A



# NM4 PROPOSED CROSS SECTIONS



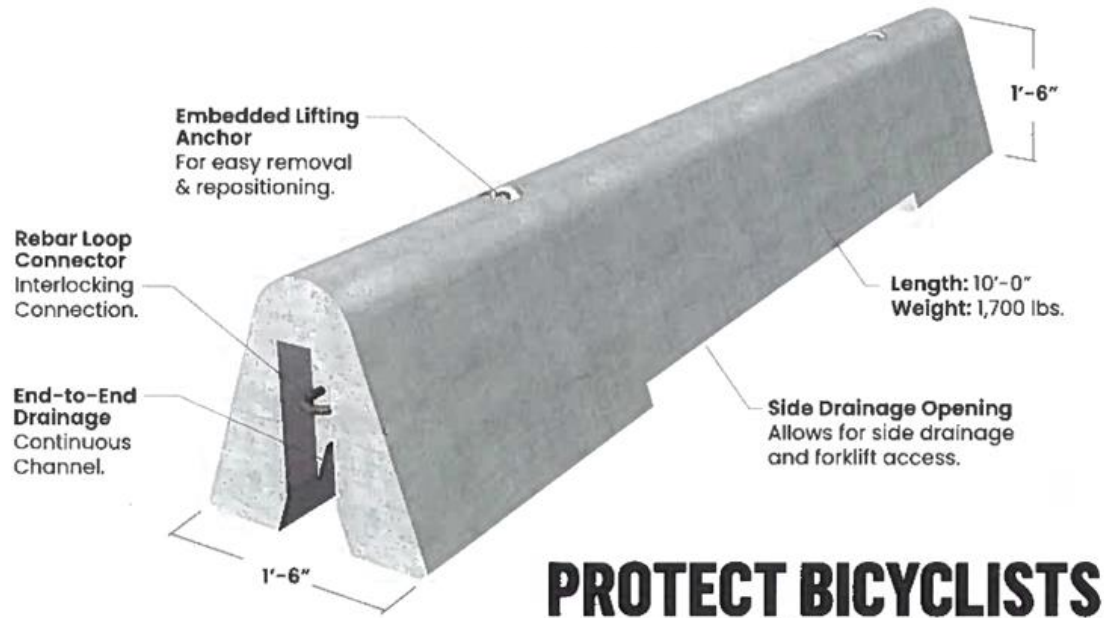
Attachment A

**Los Alamos County**  
**NM4 Crossing & Multi-Use Trail Improvements**



# PROPOSED TRAIL BUFFER BARRIER

## SAFE-T LANE Bike Lane Divider



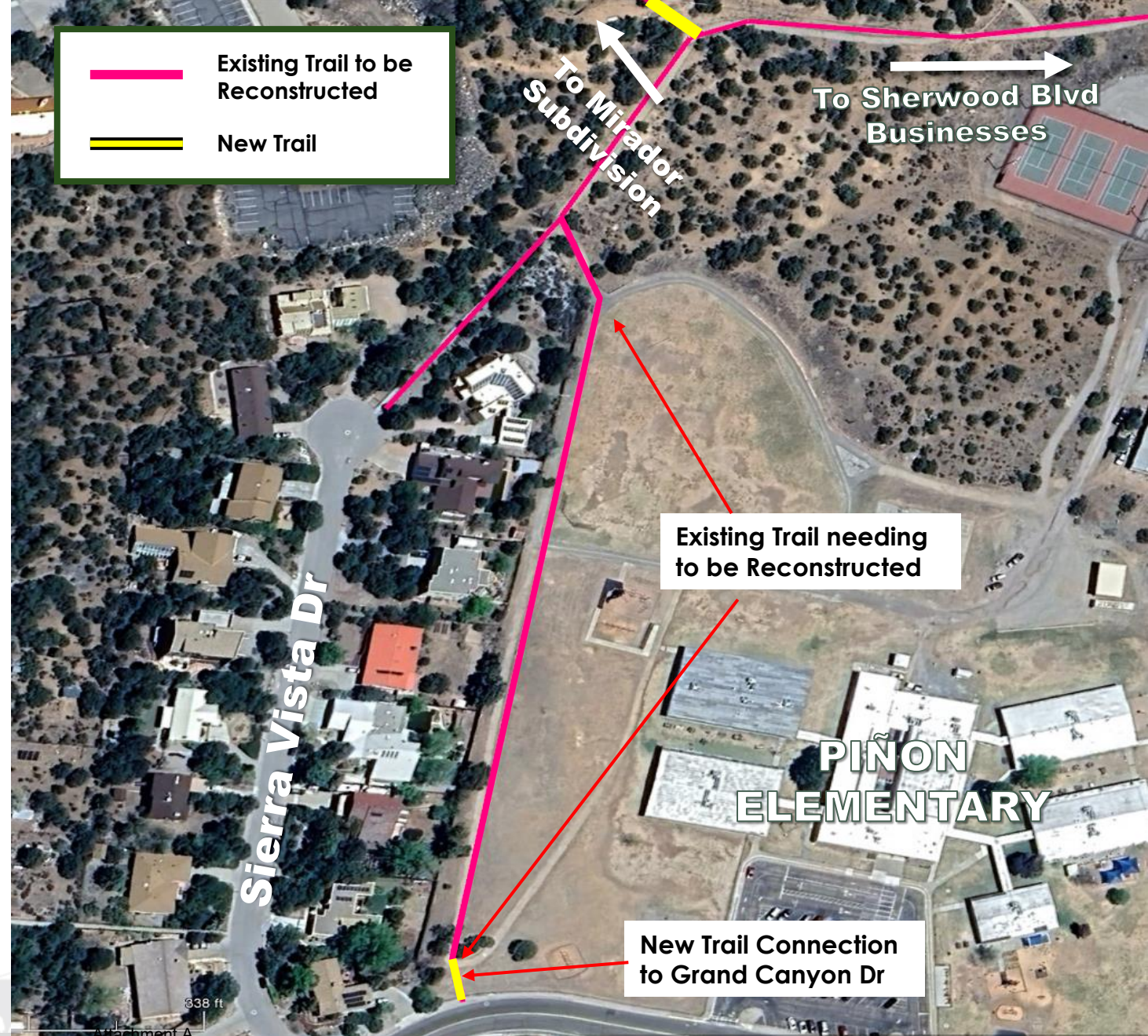
Attachment A



# PROJECT DETAILS

## PIÑON ELEMENTARY TRAIL

- Easement drafted and under review by Los Alamos Public Schools to allow this trail section to be incorporated into the project.
- ~850 linear feet of existing trail reconstruction along the west side of the school campus to improve the existing trail condition and accessibility. With Easement it will be open for public access.
- Extending the existing trail to connect with the sidewalk on the northside of Grand Canyon Drive
- Continuing to pursue Federal Funding for this Trail.





# PROJECT SCHEDULE

**Public Meeting 1:**  
December 5, 2024

**Final Design (90%):**  
Early May 2025

**Approved Design (100%):**  
Summer/Fall 2025

**Public Meeting 2:**  
February 6, 2025

**Public Meeting 3:**  
May/June 2025

**Construction:**  
Fall 2025 – Fall 2026





# QUESTIONS?



Attachment A

# Comments/Contacts

Please submit all comments in writing by **COB February 20** to:

Keith Wilson

Public Works Department

1000 Central Avenue, Suite 160

Los Alamos, NM 87544

or

Email: **keith.wilson@lacnm.us**

or

Phone: **(505)663-1757**

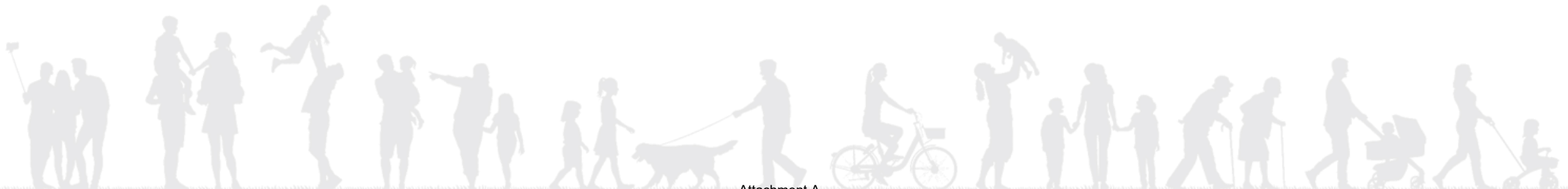


Attachment A



# Thank You!

The Public Works Department staff thanks you for taking time out of your busy schedule to participate in the design and construction of this important public project!



Attachment A