
Los Alamos County Comprehensive Health Plan Development

— Update to Los Alamos County Council —
September 19th 2023

Emily Piltch, PhD, MPH, Health Equity & Comprehensive Health Plan
Coordinator, LAC Social Services Division

Cam Counters, PhD, Chair, LACHC CHP Subcommittee

Attachment A

EQUALITY:

Everyone gets the same – regardless if it's needed or right for them.



<https://www.rwjf.org/en/insights/out-research/infographics/visualizing-health-equity.html>

EQUITY:

Everyone gets what they need – understanding the barriers, circumstances, and conditions.

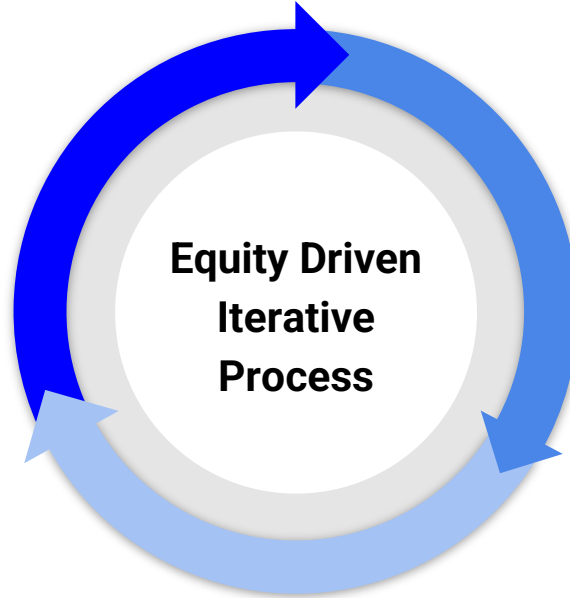


Attachment A



Comprehensive Health Plan (CHP) Development Process

- Engaging partners.
- Using multiple and diverse data collection methods.



- Learning, refining, focusing.

- Identifying most salient factors.
- Recommending effective strategies to address them.

Examples of Quantitative Data

Epidemiological

- Youth Risk and Resiliency Survey (YRRS): LAPS 6th-12th grade students who report being electronically bullied

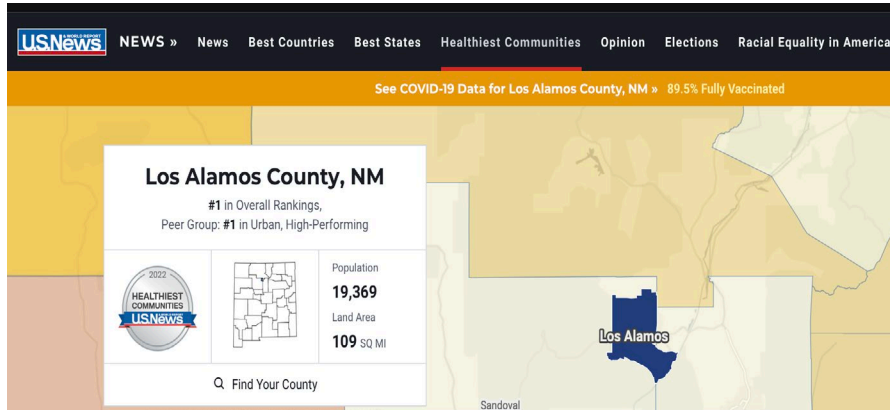
Demographic

- Census: LAC older adults living in poverty

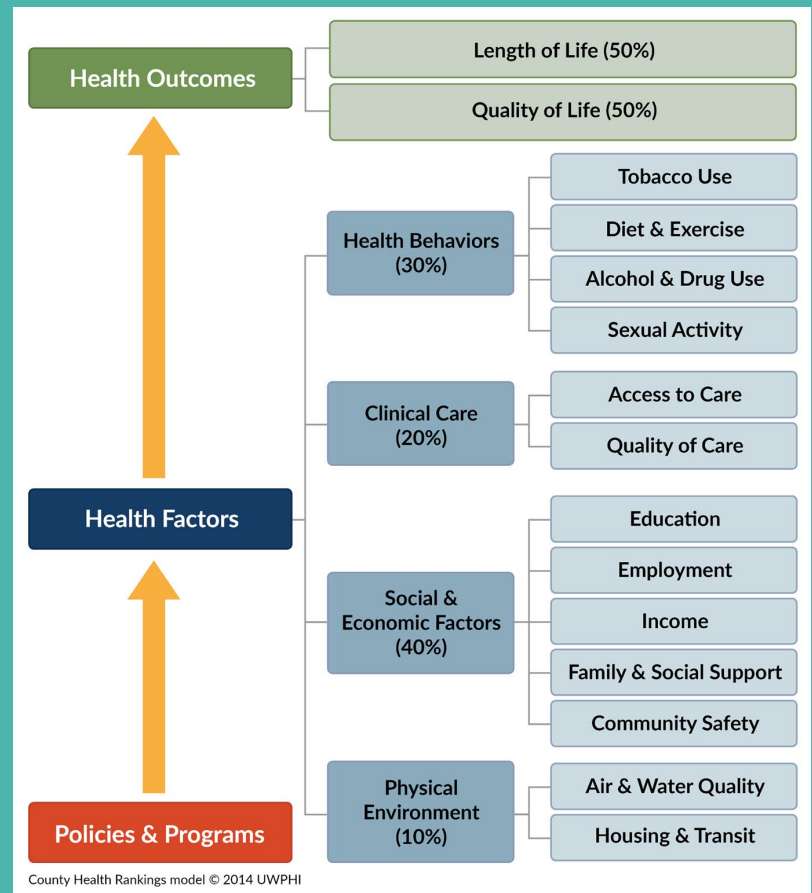
Case Counts

- LAC EMS response “Primary Impression” data

County Health Rankings Models



<https://www.usnews.com/news/healthiest-communities/new-mexico/los-alamos-county#overview>



Attachment A

<https://www.countyhealthrankings.org/explore-health-rankings/county-health-rankings-mode>

Qualitative Data Scoping Interviews

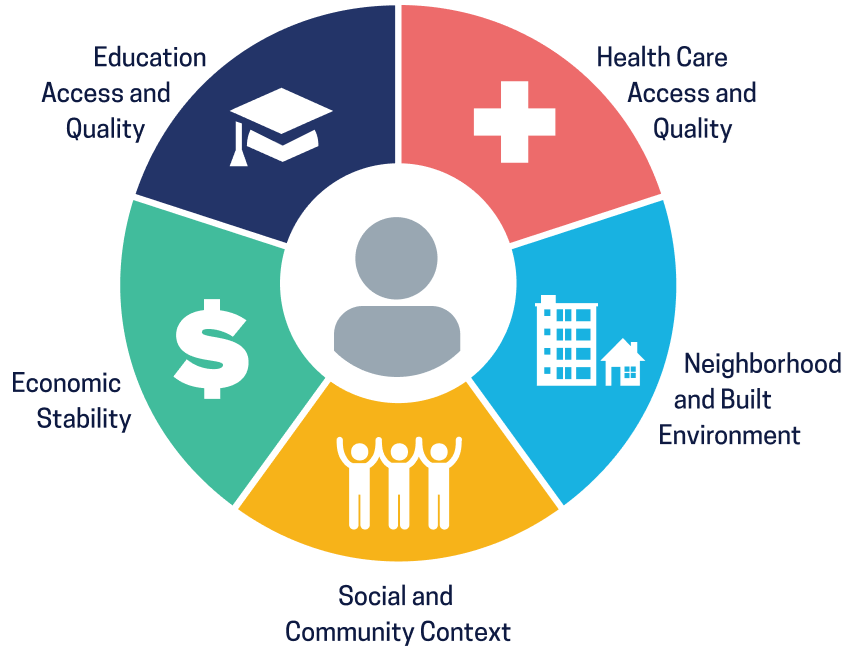
Health and wellbeing perspectives
from 200 providers and
community members

Identified and interviewed key informants in various health professions, community agencies, and community groups.

- Health care, social service, non profit organization providers
- Unique needs by lifestage
- Individuals who face wide range of disparities

Examples of Themes Identified from Interviews and Focus Groups

Social Determinants of Health

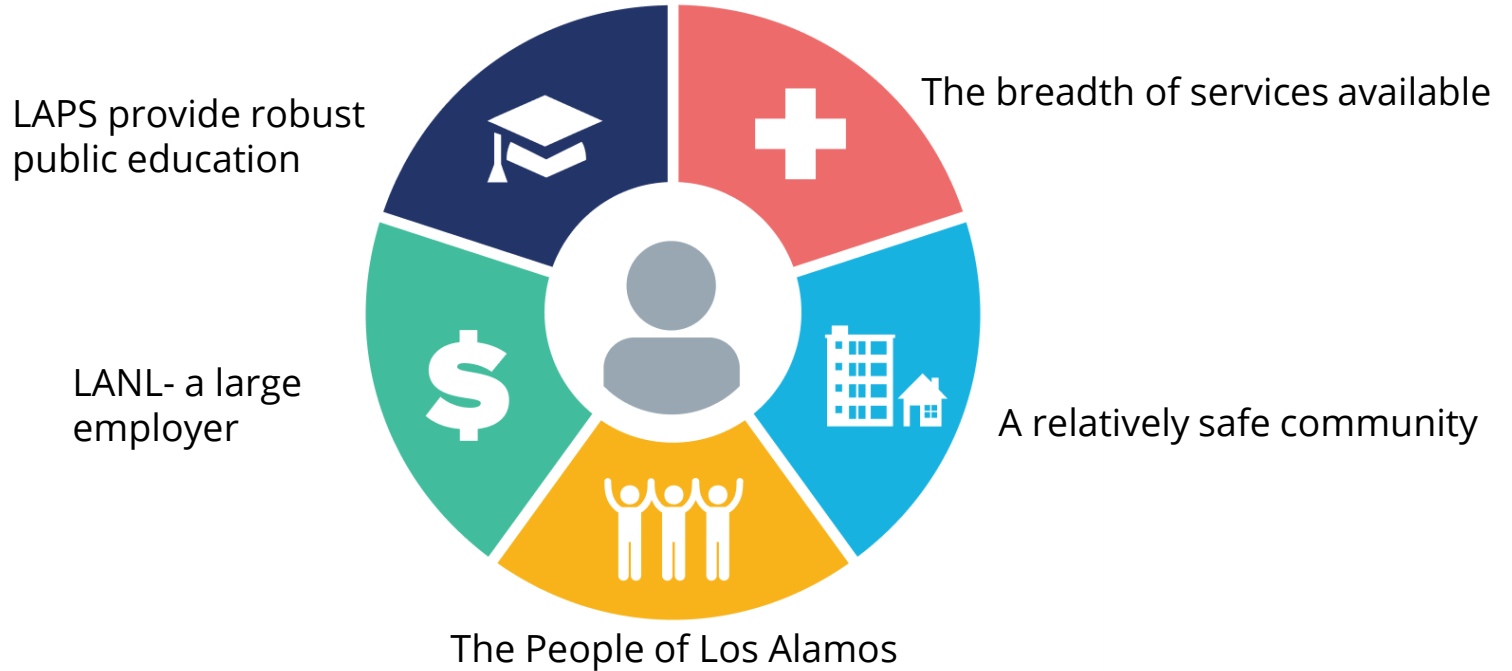


All of what we have learned falls under one or more of the social determinants of health.

Social Determinants of Health (SDOH)

The conditions in the environments where people are born, live, learn, work, play, worship, and age that affect a wide range of health, functioning, and quality-of-life outcomes and risks.

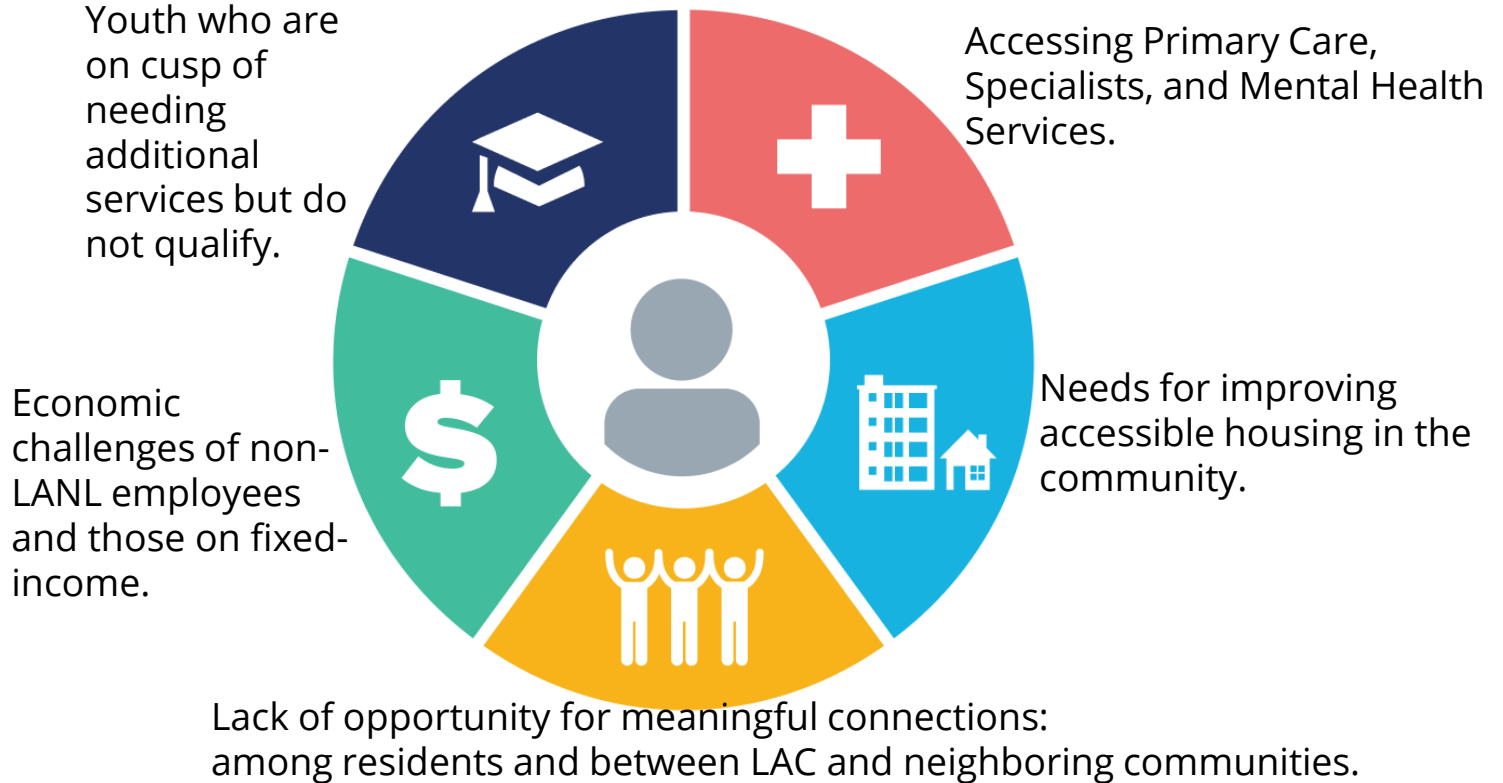
Social Determinants of Health



Social Determinants of Health



Social Determinants of Health



Summary of What We Have Learned So Far:

- Los Alamos County ranks high on most indicators but trending downward on some.
- From the interviews, we have learned that while there are commonalities in the factors that impact health and wellbeing, how those factors are manifested and level of impact they have, varies widely among health issues and the specific life conditions of the people we spoke with.
- There are many factors that contribute to community health that can be acted on.

Collaborative Solutions to Addressing Community Health Needs

Regional / State partnerships

Statewide
Homeless
Summit

Regional
meeting with
SF Mayor
Webber

Regional
meeting with
Rio Arriba's
Ahmed
Dadzie

County Council

Outreach to
legislators

Policy
supports

Social Services

Opioid
Community
Conversations

Mobile
Homeless
Outreach

What's Next?

- January 2024: Phase I Summary Report delivered to Council
- Spring-Summer 2024: Statistically valid community-wide health survey assessing the extent to which the community is impacted by issues identified during interviews.
- Fall 2024: Phase II Implementation of Comprehensive Health Plan including strategies, priority areas, iterative plan for addressing community health needs.

Thank you for your dedication to this important work.

Questions?