
Los Alamos County Comprehensive Health Plan Development

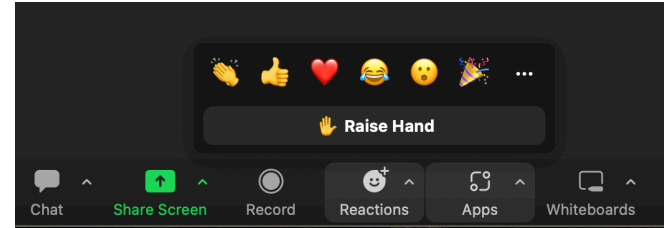
Community input session
December 14th 2023

Emily Pilitch, PhD, MPH, Health Equity & Comprehensive Health Plan
Coordinator, LAC Social Services Division

Cam Counters, PhD, Chair, LACHC CHP Subcommittee

Housekeeping

- Please keep yourself on mute unless you have something you would like to share with the group.
- If you would like to share written input, type into the Chat.
- We request that you bring curiosity, openness, and empathy to this evening. We have many assets in this community and also challenges that impact some people more starkly than others. We welcome all constructive ideas.



Agenda for the evening

Introduction

Overview of project and what we have learned so far

Public input opportunity

Context setting

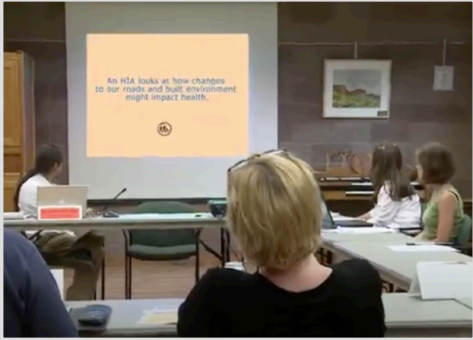
A bit of my background:



LA Walks
The Los Alamos Walkability Advocacy Group
Los Alamos, New Mexico

LA Walks is a citizens' group supporting pedestrian safety, accessibility, convenience, and comfort throughout the com. We are actively engaged with the Transportation Board, TAPS (Trails and Pathways Subcommittee), the County Staff, volunteer organizations, private developers, and the public to make Los Alamos a safer and more enjoyable place to walk. LA Walks is part of the [New Mexico Pedestrian Safety Initiative Program](#).

You can help! Check out our [Walkability/pedestrian safety checklist](#) and design guide. Get involved in helping to make

The image is a promotional graphic for LA Walks. It features a scenic landscape of mountains and a winding road. Below the image is a circular logo with the text 'LA Walks' and an icon of a person walking with a stroller. To the right of the logo, the text reads 'LA Walks', 'The Los Alamos Walkability Advocacy Group', and 'Los Alamos, New Mexico'. Below this, there is a paragraph of text describing the organization's mission and a call to action.

<http://www.lawalks.org/>

What is public health anyway?

Sanitation and Environmental Health

500 BCE



Greeks and Romans practice community sanitation measures

1840s



The Public Health Act of 1848 was established in the United Kingdom

1970



The Environmental Protection Agency was founded

The Mission of Public Health



INSTITUTE OF MEDICINE
OF THE NATIONAL ACADEMIES

"Fulfilling society's interest in assuring conditions in which people can be healthy."

—Institute of Medicine

A Public Health Approach



EQUALITY:

Everyone gets the same – regardless if it's needed or right for them.



EQUITY:

Everyone gets what they need – understanding the barriers, circumstances, and conditions.



Qualitative Data Scoping Interviews

Health and wellbeing perspectives
from 200 providers and community
members

Identified and interviewed key informants in various health professions, community agencies, and community groups.

- Health care, social service, non profit organization providers
 - Unique needs by lifestage
 - Individuals who face wide range of disparities
-

Social Determinants of Health

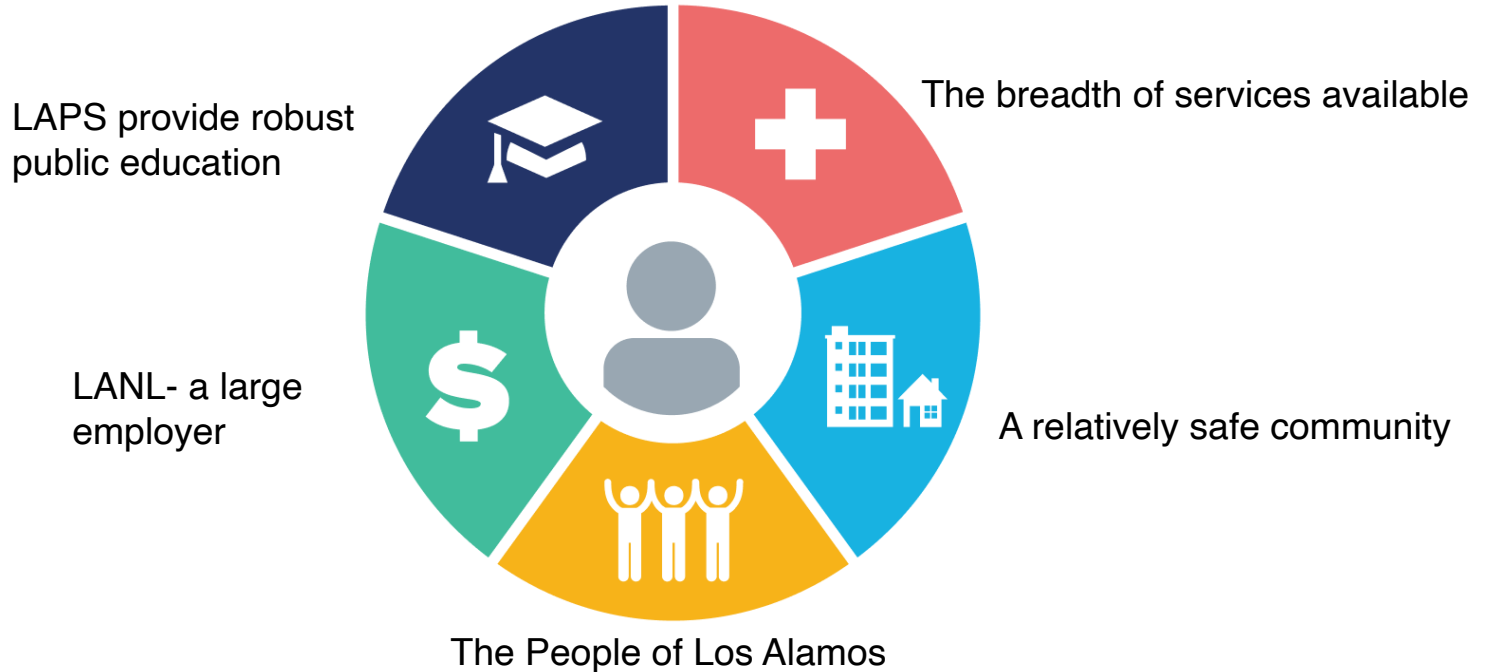


All of what we have learned falls under one or more of the social determinants of health.

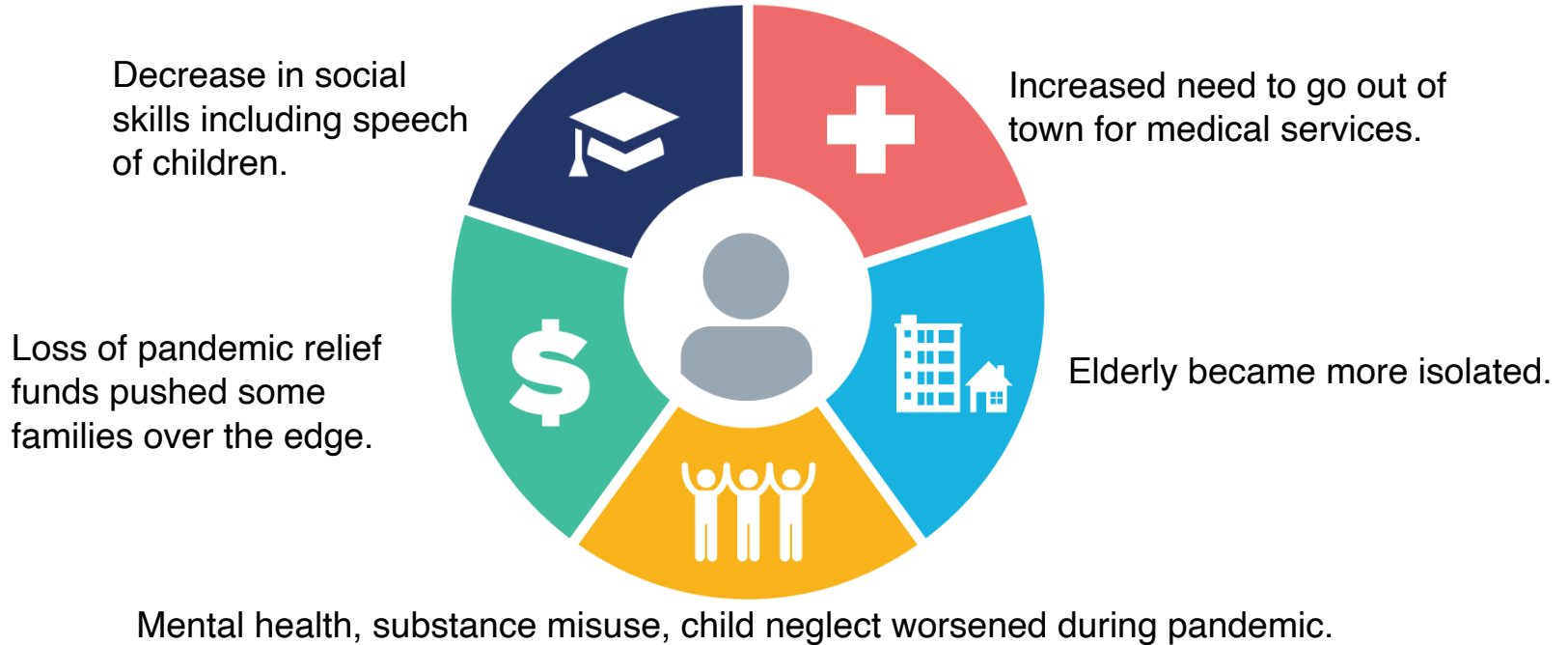
Social Determinants of Health (SDOH)

The conditions in the environments where people are born, live, learn, work, play, worship, and age that affect a wide range of health, functioning, and quality-of-life outcomes and risks.

Social Determinants of Health



Social Determinants of Health

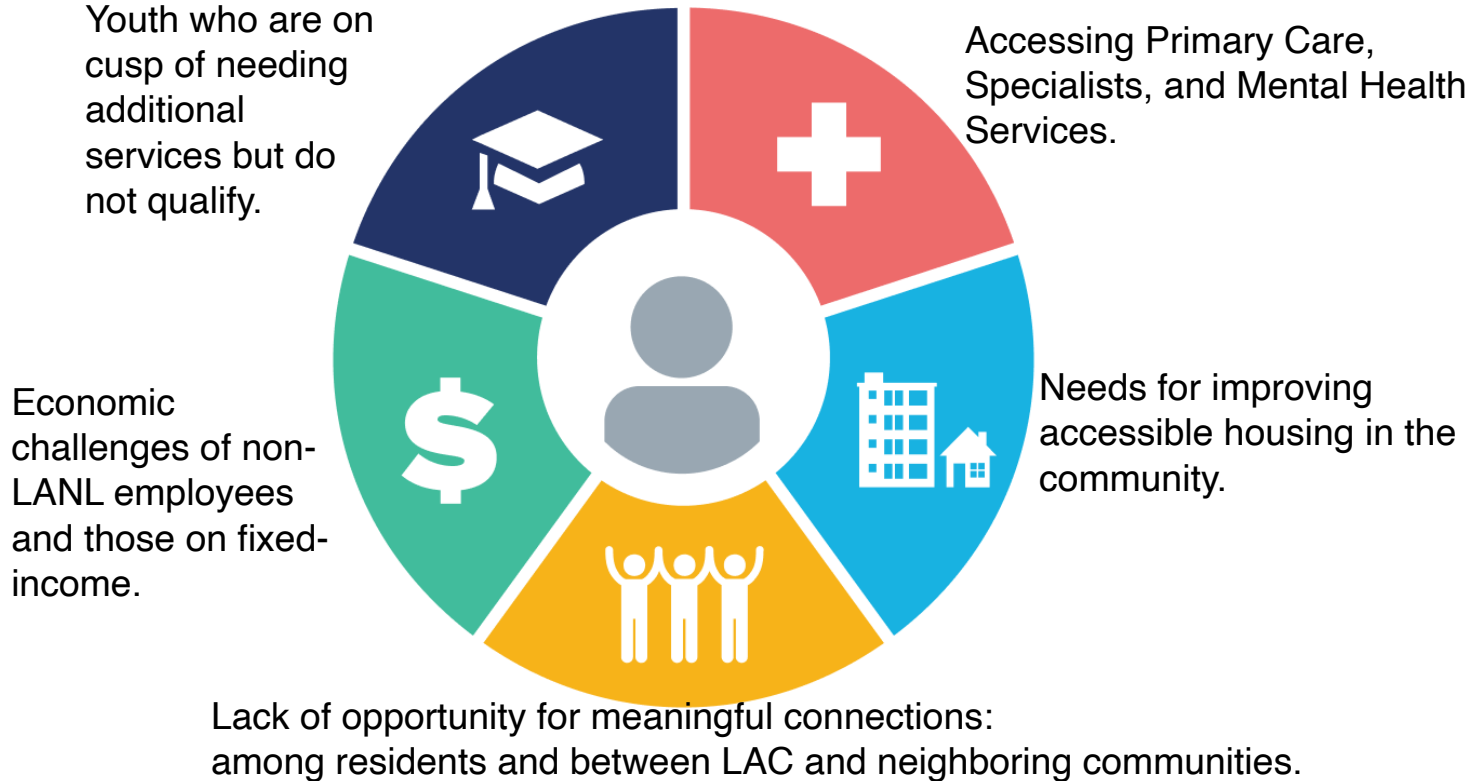


Social Determinants of Health
Copyright-free



Healthy People 2030

Social Determinants of Health



What's Next?

A summary of what was shared tonight will be emailed to the group.

Please type your email into the chat.

Brief questionnaire:
lacnm.com/chp

- January 2024: Phase I Summary Report delivered to County Council
- Spring-Summer 2024: Statistically valid community-wide health survey assessing the extent to which the community is impacted by issues identified during interviews.
- Fall 2024: Phase II Implementation of Comprehensive Health Plan including strategies, priority areas, iterative plan for addressing community health needs.

Questions?

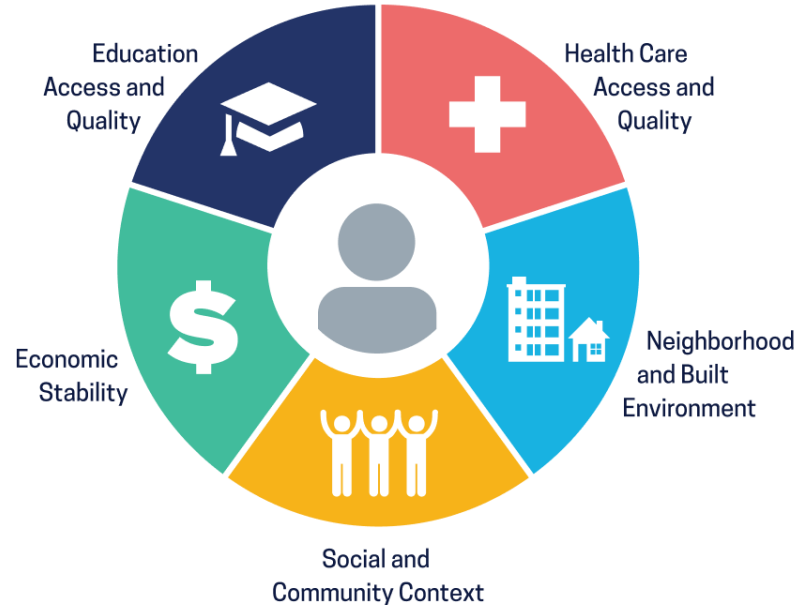
Your turn!

What matters most to you when thinking about health and wellbeing in Los Alamos County?

Assets? Barriers? Concerns?

- Use raise hand feature*
- Or just try talking if no one else is*
- Type in the chat box*

Social Determinants of Health



Thank you for your participation!

*All input will be typed up and
emailed to attendees for your
review and additions.*

Please stay in touch!

Emily Piltch

emily.piltch@lacnm.us

Keep up on CHP progress

<https://lacnm.com/CHP>
