



# Residential Sustainability Report

Service Period: March 2019

February Diversion Rate: 21%

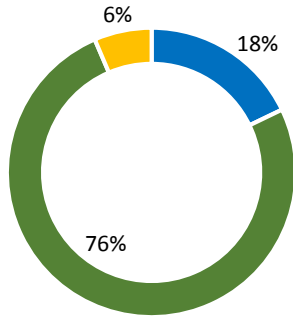
March Diversion Rate: 24%



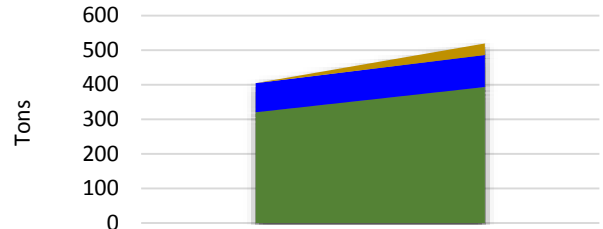
LOS ALAMOS

The *diversion rate* is the percent of recyclable and compostable material diverted from the landfill.

## Monthly Collection Report

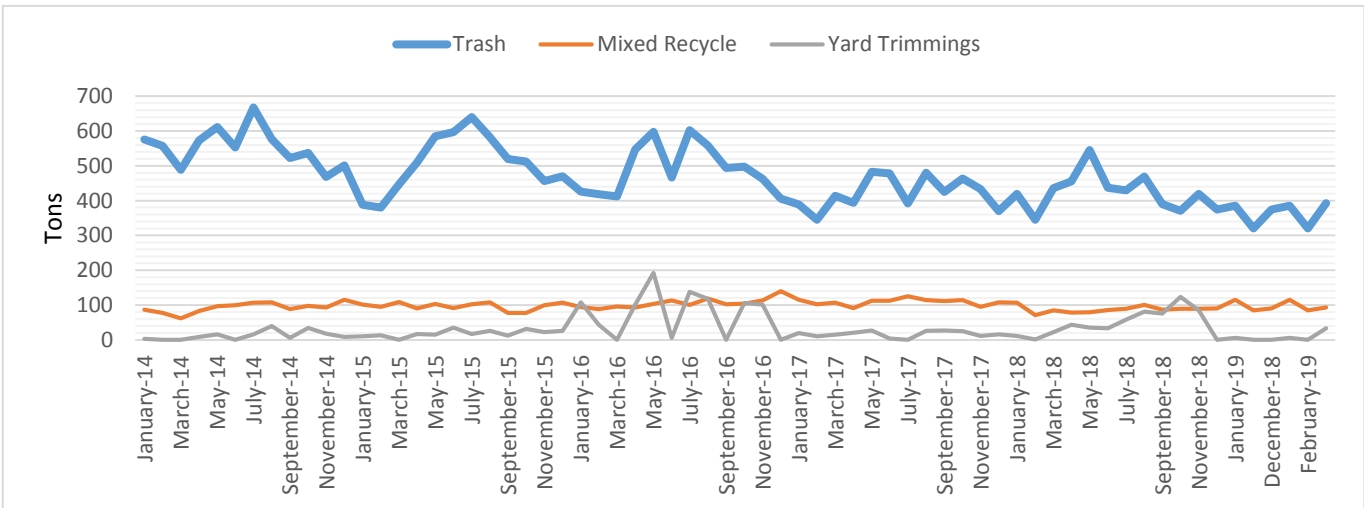


■ Mixed Recycle ■ Trash ■ Yard Trimmings

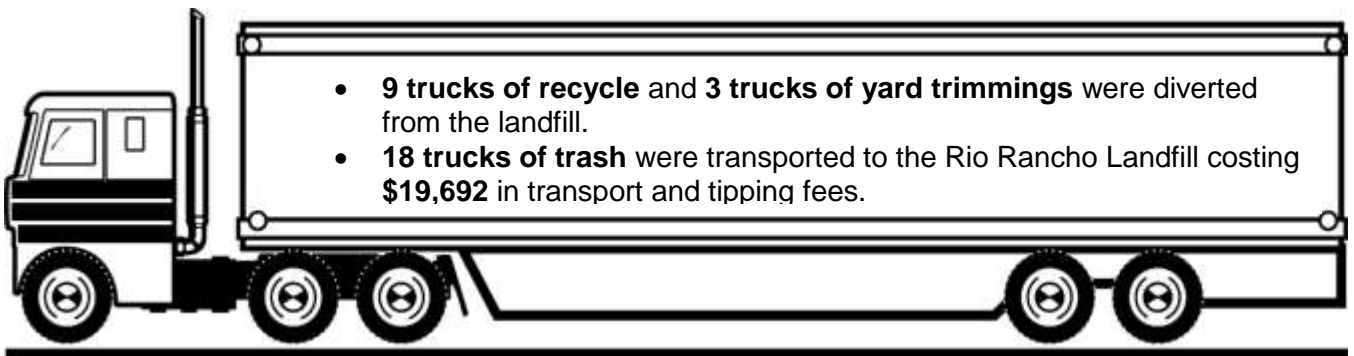


	Feb-19	Mar-19
Yard Trimming	0	33.37
Recycle	84.35	92.64
Trash	319.9	392.79

In March by recycling and composting Los Alamos County reduced GHG emissions by ~384 tons



In 2019 by recycling and composting Los Alamos County reduced GHG emissions by ~1081 tons



For more information contact Environmental Services Division at 505.662.8163 or email [solidwaste@lacnm.us](mailto:solidwaste@lacnm.us)