

INCORPORATED COUNTY OF LOS ALAMOS ORDINANCE NO. 696

**AN ORDINANCE PROVIDING FOR THE TRANSFER OF APPROXIMATELY
87,976 SQUARE FEET, OR 2.02 ACRES ±, OF LAND OWNED BY THE
INCORPORATED COUNTY OF LOS ALAMOS TO THE BOARD
OF THE LOS ALAMOS PUBLIC SCHOOLS**

WHEREAS, the Incorporated County of Los Alamos (“County”) has agreed to convey approximately 87,976 square feet of County land, the description of which is attached hereto as Exhibit “A”, to the Board of the Los Alamos Public Schools (“Schools”); and

WHEREAS, County and Schools mutually agree that the land transfer is in the best interest of both parties; and

WHEREAS, the transfer shall be subject to the execution and performance by the parties, or their designated and authorized representatives, of all documents, including quitclaim deeds, free and clear of any encumbrances, and the filing thereof with any and all proper authorities or entities.

**BE IT ORDAINED BY THE GOVERNING BODY OF THE INCORPORATED COUNTY
OF LOS ALAMOS:**

Section 1. Pursuant to Section 14-31 of the Code of Ordinances of the Incorporated County of Los Alamos, a total of approximately 87,976 square feet of County-owned land, the description of which is attached hereto as Exhibit “A”, shall be conveyed by quitclaim deed to the Schools.

Section 2. County Staff is hereby directed to prepare all documents necessary to effect the conveyance, and the Council Chair is hereby authorized to execute all documents necessary to effect the conveyance on behalf of County.

Section 3. This Ordinance shall be effective thirty (30) days after publication of notice of its adoption. Publication shall be made by general summary.

ADOPTED this the 27th day of August, 2019.

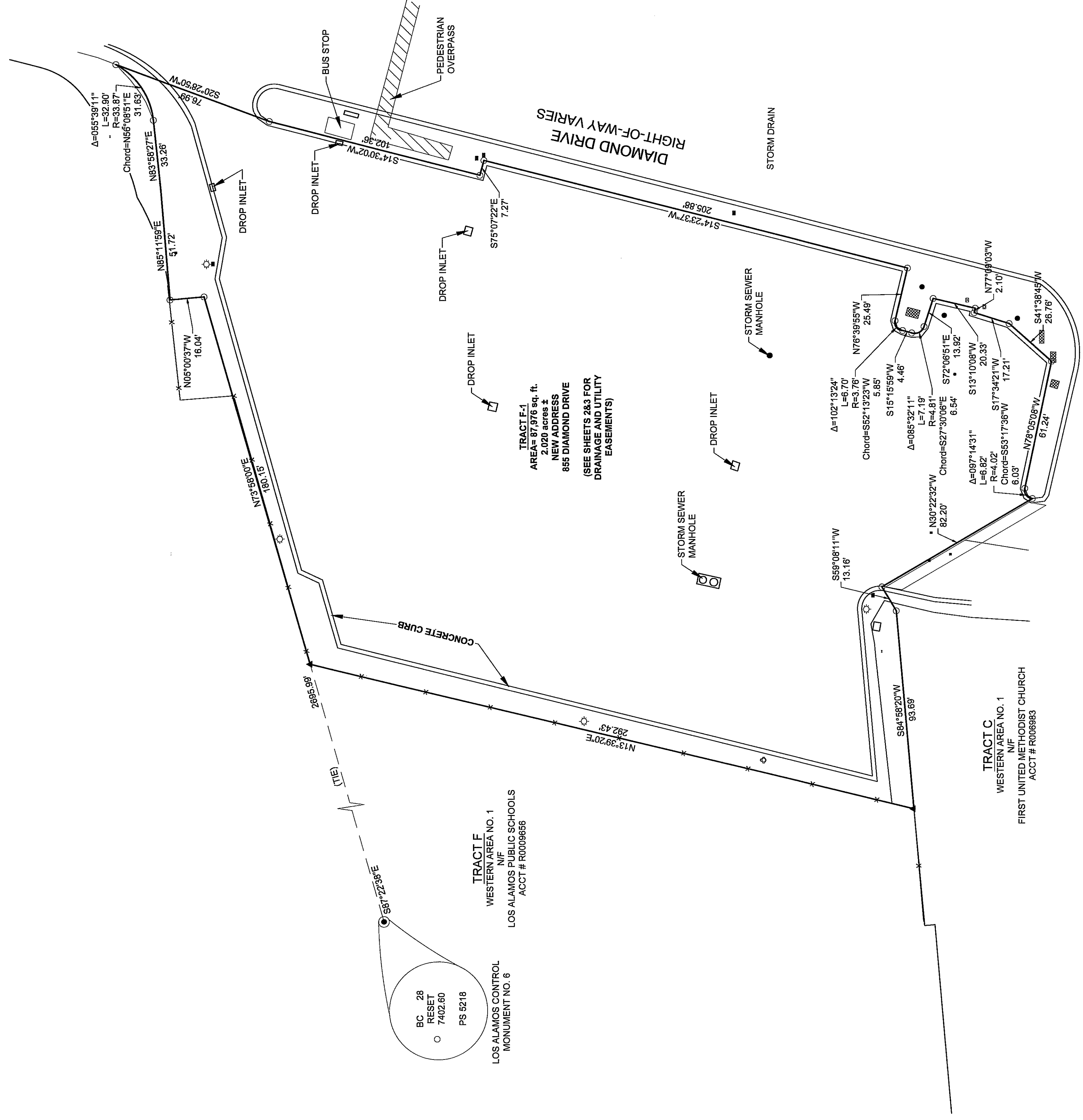
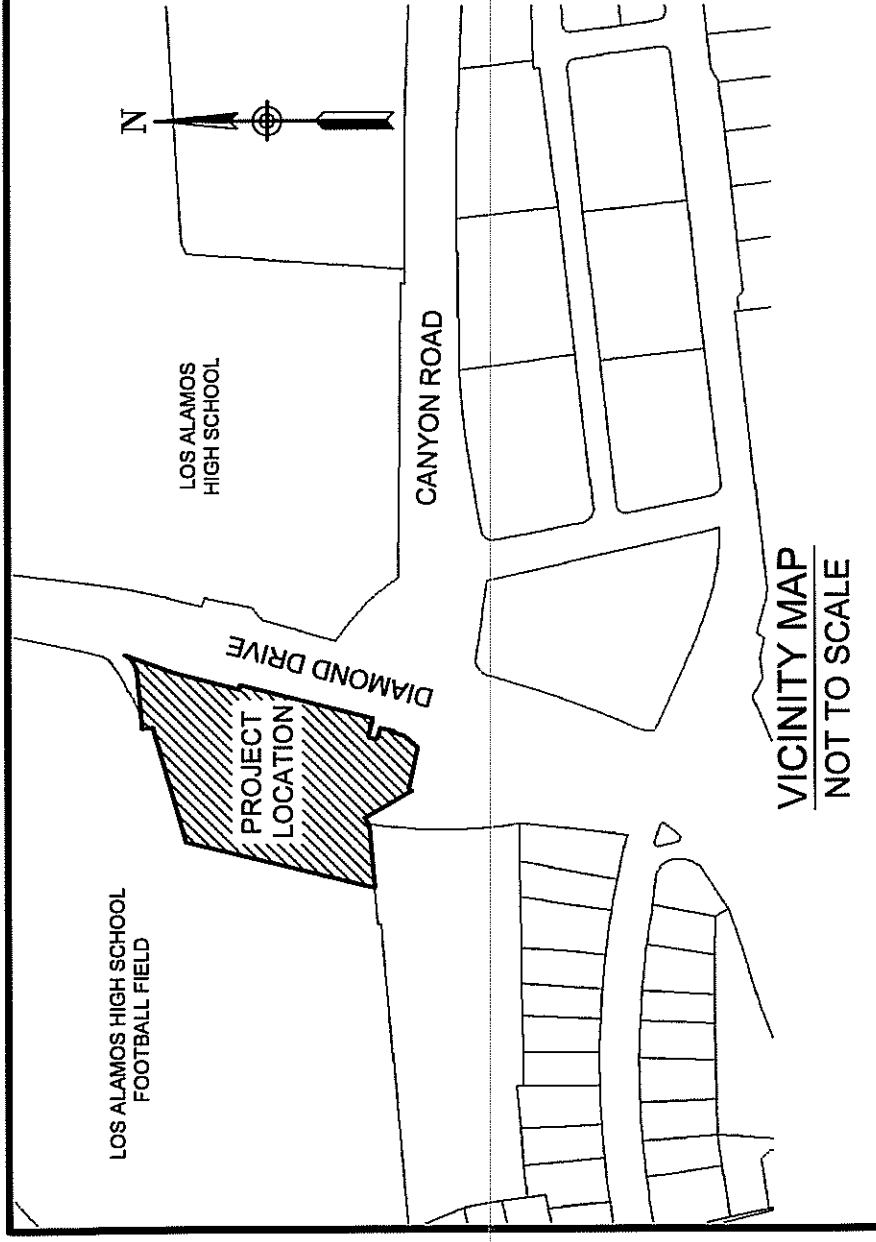
**COUNCIL OF THE INCORPORATED
COUNTY OF LOS ALAMOS**

Sara C. Scott, Council Chair

ATTEST:

**Naomi D. Maestas
Los Alamos County Clerk**

**BOUNDARY SURVEY OF TRACT F-1
A PREVIOUSLY LOS ALAMOS COUNTY
RIGHT-OF-WAY WITHIN
WESTERN AREA #1
LOS ALAMOS COUNTY,
NEW MEXICO**



DEDICATION
THE AREA DESIGNATED HEREON AS TRACT F-1 FORMERLY PUBLIC RIGHT-OF-WAY AS WELL AS THOSE UTILITY AND DRAINAGE EASEMENTS DELINEATED HEREON, IS HEREBY GRANTED TO THE INCORPORATED COUNTY OF LOS ALAMOS AND ITS SUCCESSORS AND ASSIGNS FOR THE PURPOSE OF DRAINAGE & UTILITY EASEMENTS OVER, ACROSS, IN AND UPON THE LAND SHOWN AND VEHICULAR INGRESS TO DIAMOND DRIVE.

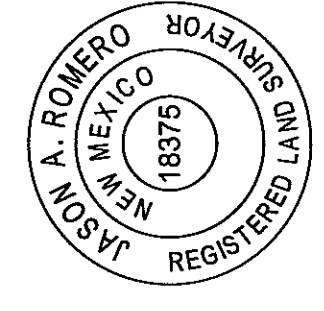
COUNTY OF LOS ALAMOS APPROVALS
THIS PLAT IS HEREBY APPROVED THIS 14 DAY OF August 2019 BY THE LOS ALAMOS COUNTY COMMUNITY DEVELOPMENT DIRECTOR IN ACCORDANCE WITH THE SUMMARY PROCEDURE AUTHORIZED BY THE PLANNING AUTHORITY OF LOS ALAMOS COUNTY, NEW MEXICO.
[Signature] COUNTY COMMUNITY DEVELOPMENT DIRECTOR
DATE 8/14/19

LEGAL DESCRIPTION
A Tract of land within Western Area No. 1, Los Alamos, Los Alamos County, New Mexico, more particularly described as:
Beginning at the point for control monument No. LAC-6 (Trinity) within the Los Alamos County Control Map.
Thence S87°22'39"E a distance of 2895.99 ft to the point and place of beginning.
Thence bearing N 72°58'00"E a distance of 186.15 ft;
Thence bearing N 05°00'37"W a distance of 16.04 ft;
Thence bearing N 85°11'39"E a distance of 51.72 ft;
Thence bearing N 85°59'27"E a distance of 33.26 ft;
Thence along a curve to the left, having a radius of 33.26 ft, a delta angle of 55° 38' 11", and whose long chord bears N 56°08'53"E a distance of 31.63 ft;
Thence bearing S 20°28'59"W a distance of 76.99 ft;
Thence bearing S 14°30'02"W a distance of 102.36 ft;
Thence bearing S 75°07'22"E a distance of 7.27 ft;
Thence bearing S 14°23'37"W a distance of 205.88 ft;
Thence bearing S 76°39'55"W a distance of 25.49 ft;
Thence along a curve to the left, having a radius of 3.76 ft, a delta angle of 102° 13' 24", and whose long chord bears S 76°39'55"W a distance of 3.82 ft. ;
Thence along a curve to the left, having a radius of 4.46 ft, a delta angle of 68° 32' 11", and whose long chord bears S 27°30'51"E a distance of 6.54 ft. ;
Thence bearing S 72°05'11"E a distance of 13.92 ft. ;
Thence bearing N 13°10'09"W a distance of 2.10 ft. ;
Thence bearing S 17°34'21"W a distance of 17.21 ft. ;
Thence bearing S 41°38'45"W a distance of 26.76 ft. ;
Thence along a curve to the left, having a radius of 13.92 ft, a delta angle of 102° 13' 24", and whose long chord bears S 55°17'39"W a distance of 82.20 ft. ;
Thence bearing N 30°22'32"W a distance of 4.02 ft. , a delta angle of 67° 14' 31", and whose long chord bears S 55°17'39"W a distance of 6.03 ft. ;
Thence bearing S 59°51'11"W a distance of 13.16 ft. ;
Thence bearing S 84°58'20"W a distance of 93.69 ft. ;
Thence bearing N 13°39'20"E a distance of 292.43 ft. to the point and place of beginning.

Tract contains 2.020 acres OR 87,976 square feet ±.

EVV 178 A-6
09/17/2019
240229.68 Page: 1-4
Name: D. Keesler - County Clerk
Los Alamos County, NM
LAC-PLAT
Page(s): 1-3

SURVEYORS CERTIFICATE
I, JASON A. ROMERO, HEREBY CERTIFY THAT I AM A REGISTERED PROFESSIONAL SURVEYOR UNDER THE LAWS OF THE STATE OF NEW MEXICO AND THAT THIS PLAT AND THE NOTES HEREON WERE PREPARED FROM DOCUMENTS LISTED UNDER THE HEADING 'REFERENCE DOCUMENTS' AND FROM FIELD NOTES OF AN ACTUAL SURVEY MADE UNDER MY SUPERVISION IN JULY 2019, AND MEETS THE MINIMUM REQUIREMENTS OF THE STANDARDS OF LAND SURVEYS IN NEW MEXICO AS ADOPTED BY THE NEW MEXICO STATE BOARD OF LICENSURE FOR PROFESSIONAL ENGINEERS AND PROFESSIONAL SURVEYORS AND IS TRUE AND CORRECT TO THE BEST OF MY KNOWLEDGE AND BELIEF.



[Signature] JASON A. ROMERO, N.M.P.S. NO. 18375
County of Los Alamos, Public Works Dept., Engineering, Dir.
1000 Central Ave., Suite 160
Los Alamos, New Mexico 87544
Ph. (505) 662-8150

GENERAL NOTES
1. FIELD SURVEY WAS COMPLETED ON AUGUST 9, 2019.
2. THIS PROPERTY LIES WITHIN SECTIONS 8, 9, 15 AND 16, TOWNSHIP 19 NORTH, RANGE 6 EAST, N.M.P.M.
3. BASIS OF BEARINGS: N.M.D.O.T. GPS CONTROL SURVEY MAP ENTITLED "LOS ALAMOS CONTROL" PREPARED BY WILLIAM A. BOWERS, N.M.P.S. 11765 ON OCTOBER 9, 2008 AND FILED FOR RECORD IN THE SURVEY & MAPPING SPECIALTY SECTION OF THE NEW MEXICO DEPARTMENT OF TRANSPORTATION GENERAL OFFICE BUILDING LOCATED AT 1120 CERRILLOS RD., SANTA FE, NEW MEXICO. PHONE # (505) 827-5100.
4. ALL DISTANCES SHOWN HEREON ARE GROUND DISTANCES (U.S. SURVEY FOOT).
PROJECT AVERAGE COMBINED GRID SCALE FACTOR = 1.000446063

REFERENCE DOCUMENTS
1. LOT LINE ADJUSTMENT BETWEEN TRACT F, WESTERN AREA NO. 1 & DIAMOND DRIVE RIGHT-OF-WAY, WESTERN AREA NO. 1, LOS ALAMOS, NEW MEXICO. RECORDED IN PLAT BOOK 162, PAGE 911 ON APRIL 18, 2013 AS INSTRUMENT NO. 2117026 IN THE RECORDS OF LOS ALAMOS COUNTY, NEW MEXICO.
2. WESTERN AREA NO. 1, U.S. ATOMIC ENERGY COMMISSION, LOS ALAMOS AREA OFFICE. PREPARED BY LIMBAUGH ENGINEERING AND AERIAL SURVEYS, INC., RECORDED IN PLAT BOOK 4, PAGE 666 ON SEPTEMBER 20, 1965.

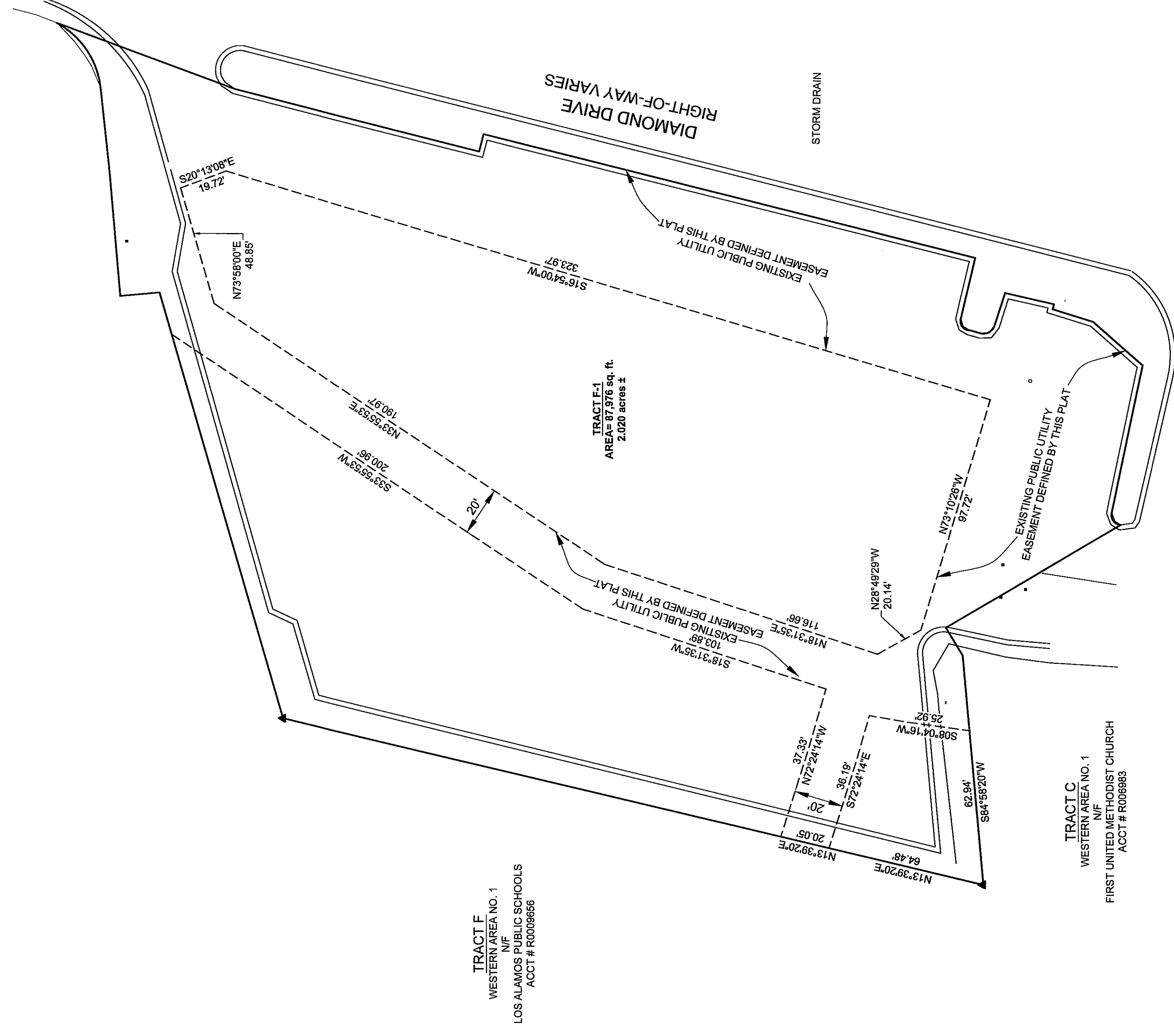
LEGEND
▲ FOUND T-BAR WICAP
● FOUND 1/2" REBAR WICAP OR PK NAIL WITH FLASHER STAMPED "LS 11983"
○ REBAR WITH CAP OR PK NAIL WITH FLASHER STAMPED "LS 18375" SET
⊙ TELCOM MANHOLE
⊙ ELECTRIC MANHOLE
⊙ SANITARY SEWER MANHOLE
⊙ WATER VALVE
⊙ STREET LIGHT POLE
⊙ FIRE HYDRANT
⊙ ELECTRICAL EQUIPMENT BOXES

INCORPORATED COUNTY OF LOS ALAMOS, PUBLIC WORKS DEPT.
ENGINEERING DIVISION
1000 CENTRAL AVE., SUITE 160
LOS ALAMOS, NEW MEXICO 87544
(505) 662-8150 FAX: (505) 662-8109

LOS ALAMOS

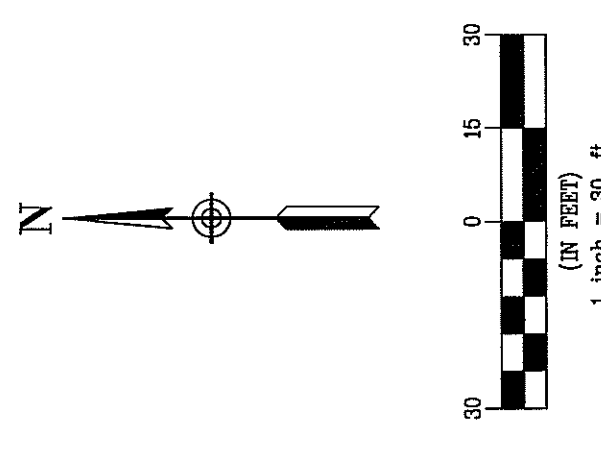
**BOUNDARY SURVEY OF TRACT F-1
A PREVIOUSLY LOS ALAMOS COUNTY
RIGHT-OF-WAY WITHIN
WESTERN AREA #1
LOS ALAMOS COUNTY,
NEW MEXICO**

**LOCATION OF UTILITY EASEMENTS
CREATED THIS PLAT**



LEGAL DESCRIPTION

A Tract of land within Western Area No. 1, Los Alamos, Los Alamos County, New Mexico, more particularly described as:
Beginning at the point for control monument No. LAC-6 (Trinity) within the Los Alamos County Right-of-Way, and
Thence S87°22'38"E a distance of 2695.98 ft to the point and place of beginning;
thence bearing N 73°58'00"E a distance of 180.15 ft;
thence bearing N 5°00'37" W a distance of 16.04 ft ;
thence bearing N 85°11'59" E a distance of 51.72 ft ;
thence bearing N 83°58'27" E a distance of 33.26 ft. ;
thence along a curve to the LEFT, having a radius of 33.87 ft, a central angle of 102°14'59", to the point and place of beginning;
thence bearing S 20°28'50" W a distance of 32.90 ft. ;
thence bearing S 14°30'2" W a distance of 102.36 ft. ;
thence bearing S 75°7'22" E a distance of 7.27 ft. ;
thence bearing N 76°39'55" W a distance of 26.49 ft. ;
thence bearing N 76°39'55" W a distance of 26.49 ft. ;
thence along a curve to the LEFT, having a radius of 3.76 ft, a central angle of 102°14'59", to the point and place of beginning;
thence bearing S 20°28'50" W a distance of 32.90 ft. ;
thence bearing S 14°30'2" W a distance of 102.36 ft. ;
thence bearing S 75°7'22" E a distance of 7.27 ft. ;
thence bearing N 76°39'55" W a distance of 26.49 ft. ;
thence bearing N 76°39'55" W a distance of 26.49 ft. ;
thence along a curve to the LEFT, having a radius of 4.81 ft, a central angle of 85°32'11", and whose long chord bears S 27°30'6" E a distance of 7.19 ft. ;
thence bearing S 72°6'51" E a distance of 13.92 ft. ;
thence bearing N 13°10'8" W a distance of 20.33 ft. ;
thence bearing N 77°9'3" W a distance of 2.10 ft. ;
thence bearing S 47°38'49" W a distance of 26.76 ft. ;
thence bearing S 47°38'49" W a distance of 26.76 ft. ;
thence along a curve to the LEFT, having a radius of 4.02 ft, a central angle of 97°14'31", and whose long chord bears S 53°17'36" W a distance of 6.82 ft. ;
thence bearing N 30°22'32" W a distance of 82.20 ft. ;
thence bearing S 89°8'-11" W a distance of 13.16 ft. ;
thence bearing S 84°58'20" W a distance of 83.69 ft. ;
thence bearing N 73°39'20" E a distance of 892.43 ;
to the point of beginning.
Tract contains 2.020 acres OR 87,976 square feet +/-.



GENERAL NOTES

1. FIELD SURVEY WAS COMPLETED ON AUGUST 9, 2019.
2. THIS PROPERTY LIES WITHIN SECTIONS 8, 9, 15 AND 16, TOWNSHIP 19 NORTH, RANGE 6 EAST N.M.P.M.
3. BASIS OF BEARING: N.M.D.O.T. GPS CONTROL SURVEY MAP ENTITLED, "LOS ALAMOS CONTROL", PREPARED BY WILLIAM A. BOWERS, N.M.P.S. 11765 ON OCTOBER 9, 2008 AND FILED FOR RECORD IN THE SURVEY & MAPPING SPECIALTY SECTION OF THE NEW MEXICO DEPARTMENT OF TRANSPORTATION GENERAL OFFICE BUILDING LOCATED AT 1120 CERRILLOS RD., SANTA FE, NEW MEXICO. PHONE # (505)827-9100.
4. ALL DISTANCES SHOWN HEREON ARE GROUND DISTANCES (U.S. SURVEY FOOT).
PROJECT AVERAGE COMBINED GRID SCALE FACTOR = 1.000446053

REFERENCE DOCUMENTS

1. LOT LINE ADJUSTMENT BETWEEN TRACT F, WESTERN AREA NO. 1 & DIAMOND DRIVE RIGHT-OF-WAY, WESTERN AREA NO. 1, LOS ALAMOS NEW MEXICO. RECORDED IN PLAT BOOK 162, PAGE 911 ON APRIL 18, 2013 AS INSTRUMENT NO. 217026 IN THE RECORDS OF LOS ALAMOS COUNTY, NEW MEXICO.
2. WESTERN AREA NO. 1, U.S. ATOMIC ENERGY COMMISSION, LOS ALAMOS AREA OFFICE, PREPARED BY LIMBAUGH ENGINEERING AND AERIAL SURVEYS, INC., RECORDED IN PLAT BOOK 1, PAGE 666 ON SEPTEMBER 20, 1965.

LEGEND

- ▲ FOUND T-BAR W/CAP
- FOUND 1/2" REBAR W/CAP OR PK NAIL WITH FLASHER STAMPED "LS 11983"
- REBAR WITH CAP OR PK NAIL WITH FLASHER STAMPED "LS 18375" SET
- ⊕ TELCOM. MANHOLE
- ⊖ ELECTRIC MANHOLE
- ⊙ SANITARY SEWER MANHOLE
- ⊕ WATER VALVE
- ⊙ LIGHT POLE
- ⊕ FIRE HYDRANT
- ▣ ELECTRICAL EQUIPMENT BOXES

TRACT F
WESTERN AREA NO. 1
NIF
LOS ALAMOS PUBLIC SCHOOLS
ACCT # R009686

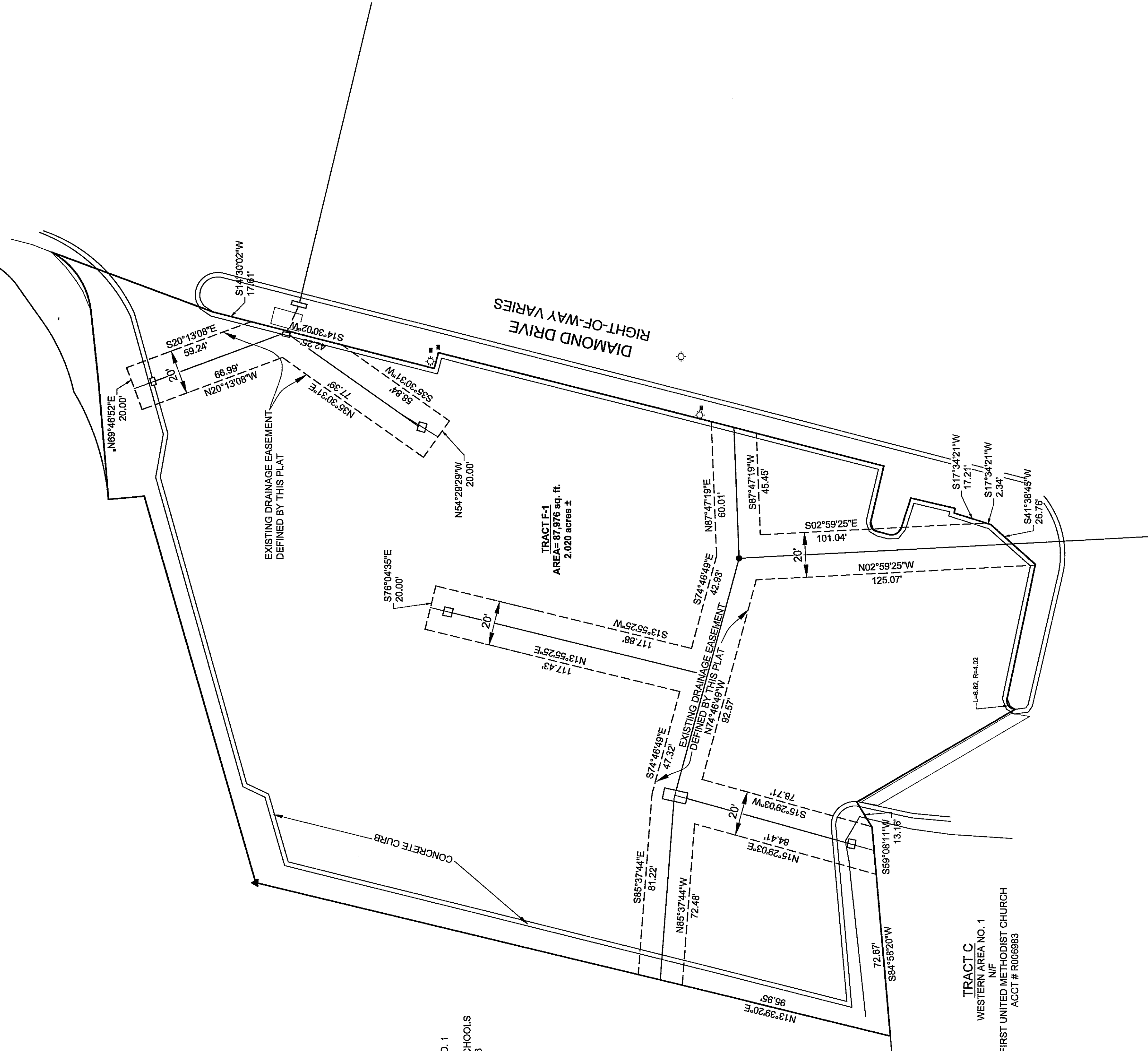
TRACT F-1
AREA= 87,976 sq. ft.
2.020 acres ±

TRACT C
WESTERN AREA NO. 1
NIF
FIRST UNITED METHODIST CHURCH
ACCT # R009683

LOS ALAMOS
INCORPORATED
COUNTY OF LOS ALAMOS,
PUBLIC WORKS DEPT.
ENGINEERING DIVISION
1000 CENTRAL AVE., SUITE 160
LOS ALAMOS, NEW MEXICO 87544
(505) 662-8150 FAX: (505) 662-5109

**BOUNDARY SURVEY OF TRACT F-1
PREVIOUSLY LOS ALAMOS COUNTY
RIGHT-OF-WAY WITHIN
WESTERN AREA #1
LOS ALAMOS COUNTY,
NEW MEXICO**

**LOCATION OF DRAINAGE EASEMENTS
CREATED THIS PLAT**



GENERAL NOTES

1. FIELD SURVEY WAS COMPLETED ON AUGUST 9, 2019.
2. THIS PROPERTY LIES WITHIN SECTIONS 8, 9, 15 AND 16, TOWNSHIP 19 NORTH, RANGE 6 EAST N.M.P.M.
3. BASIS OF BEARING: N.M.D.O.T. GPS CONTROL SURVEY MAP ENTITLED "LOS ALAMOS CONTROL", PREPARED BY WILLIAM A. CHAMBERS, N.M.L.S., DATED ON TOPORE 2008 AND FILED FOR RECORD IN THE S. DIVISION OF RECORDS AND PLATS, THE NEW MEXICO DEPARTMENT OF TRANSPORTATION GENERAL OFFICE BUILDING LOCATED AT 1120 CERRILLOS RD., SANTA FE, NEW MEXICO. PHONE # (505)827-5100.
4. ALL DISTANCES SHOWN HEREON ARE GROUND DISTANCES (U.S. SURVEY FOOT).
PROJECT AVERAGE COMBINED GRID SCALE FACTOR = 1.000446055

REFERENCE DOCUMENTS

1. LOT LINE ADJUSTMENT BETWEEN TRACT E, WESTERN AREA NO. 1, 8 DIAMOND DRIVE RIGHT-OF-WAY, WESTERN AREA NO. 1, LOS ALAMOS NEW MEXICO, RECORDED IN PLAT BOOK 163, PAGE 911, ON APRIL 18, 2013, AS INSTRUMENT NO. 217026 IN THE RECORDS OF LOS ALAMOS COUNTY, NEW MEXICO.
2. WESTERN AREA NO. 1, U.S. ATOMIC ENERGY COMMISSION, LOS ALAMOS WESTERN AREA, PREPARED BY BRADY ENGINEERING AND SURVEYS, INC., RECORDED IN PLAT BOOK 1, PAGE 666 ON SEPTEMBER 20, 1965.

LEGEND

- ▲ FOUND T-BAR W/ CAP
- FOUND 1/2" REBAR W/ CAP OR PK NAIL WITH FLASHER STAMPED "LS 11983"
- REBAR WITH CAP OR PK NAIL WITH FLASHER STAMPED "LS 18375" SET
- ⊗ TELCOM. MANHOLE
- ⊕ ELECTRIC MANHOLE
- ⊖ SANITARY SEWER MANHOLE
- ⊗ WATER VALVE
- ⊕ STREET LIGHT POLE
- ⊖ FIRE HYDRANT
- ▣ ELECTRICAL EQUIPMENT BOXES

**INCORPORATED
COUNTY OF LOS ALAMOS,
PUBLIC WORKS DEPT.**

ENGINEERING DIVISION
1000 CENTRAL AVE., SUITE 160
LOS ALAMOS, NEW MEXICO 87544
(505) 662-8150 FAX: (505) 662-8109

LOS ALAMOS