

Residential Sustainability Report



Residential Sustainability Report

Service Period: August 2020

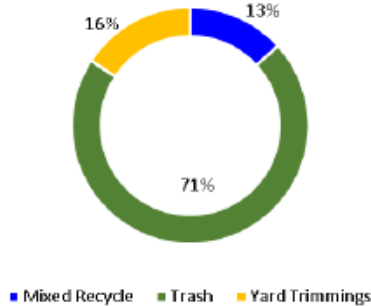


LOS ALAMOS

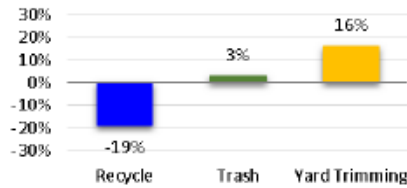
August Diversion Rate: 29%

The *diversion rate* is the percent of recyclable and compostable material diverted from the landfill.

Monthly Collection Report

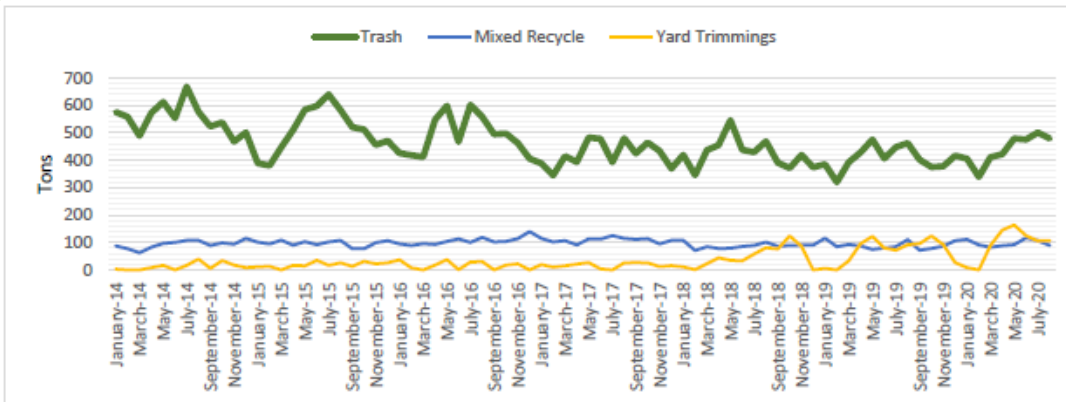


% Change Previous Year

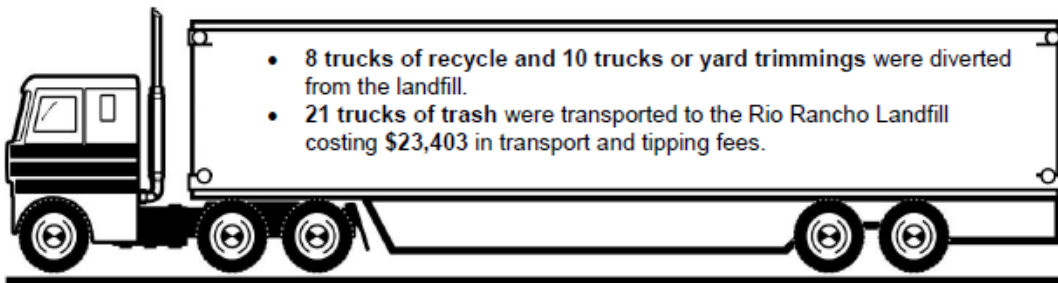


	Aug-19	Aug-20
Yard Trimming	91.40	106.43
Recycle	110.44	89.47
Trash	462.79	478.61

In August by recycling and composting Los Alamos County reduced GHG emissions by ~515 tons



In 2020 by recycling and composting Los Alamos County reduced GHG emissions by ~4,120 tons



- 8 trucks of recycle and 10 trucks of yard trimmings were diverted from the landfill.
- 21 trucks of trash were transported to the Rio Rancho Landfill costing \$23,403 in transport and tipping fees.

For more information contact Environmental Services Division at 505.662.8163 or email solidwaste@lacnm.us